

TACAN Z RWY 21

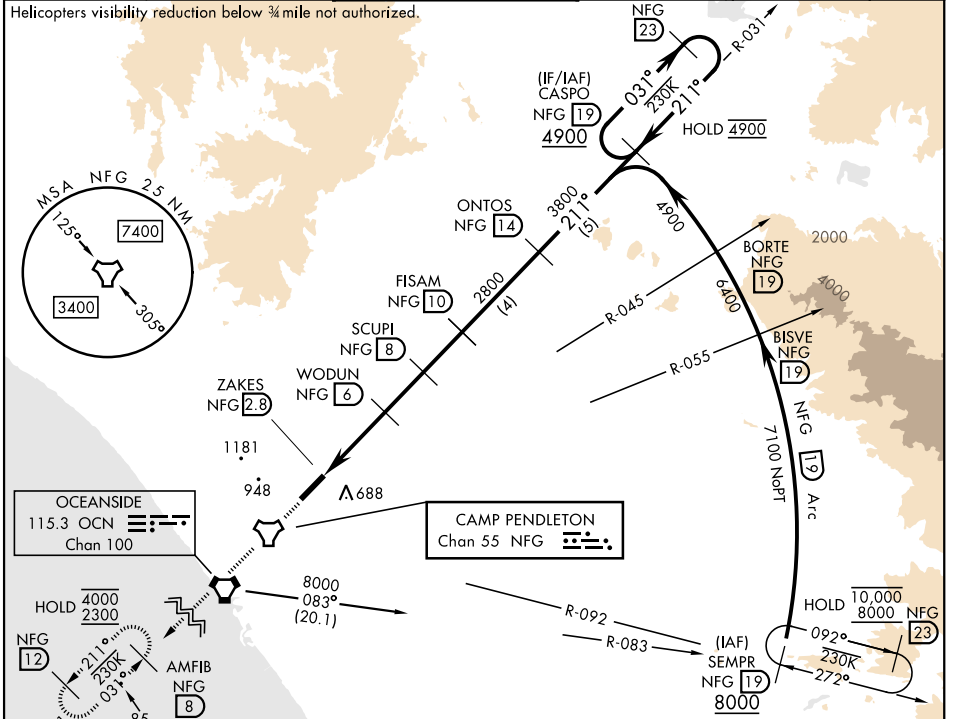
TACAN NFG Chan 55	APCH CRS 211°	Rwy Idg TDZE Arpt Elev 6005 78 78	[USN]	CAMP PENDLETON MCAS (MUNN FLD) (KNFG)
-----------------------------	-------------------------	---	-------	---------------------------------------

▼ * When ALS inop, increase CAT A vis to 1½ mile, CAT B vis to 1½ miles, CAT CD vis to 3 miles.
 ** Circling Rwy 3 not authorized at night when VGSI inop.

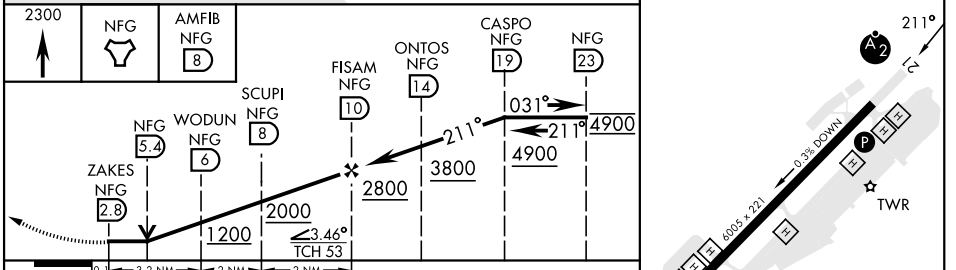


MISSED APPROACH: Climb to 2300 direct NFG TACAN then direct AMFIB and hold.

ATIS ★ 285.45	SOCAL APP CON 127.3 323.0	TOWER ★ 128.775 340.2	GND CON 134.675 360.2	CLNC DEL 134.675 271.6	ASR/PAR
-------------------------	-------------------------------------	---------------------------------	---------------------------------	----------------------------------	---------



ELEV	78	TDZE	78
------	----	------	----



CATEGORY	A	B	C	D
S-21*	1120-1 1042 (1100-1)	1120-1½ 1042 (1100-1½)	1120-2½ 1042 (1100-2½)	
CIRCLING**	1120-1½ 1042 (1100-1½)	1260-1½ 1182 (1200-1½)	1500-3 1422 (1500-3)	



OCEANSIDE, CALIFORNIA 33° 18'N-117° 21'W CAMP PENDLETON MCAS (MUNN FLD) (KNFG)

Amtd 7 12JUN25

TACAN Z RWY 21

SW-3, 16 APR 2026 to 14 MAY 2026

SW-3, 16 APR 2026 to 14 MAY 2026