

OCEANSIDE, CALIFORNIA

VOR/DME or TACAN Y RWY 21

VORTAC OCN 115.3 Chan 100	APCH CRS 206°	Rwy Ildg TDZE Arprt Elev 6005 78 78
---	-------------------------	---

[USN]

CAMP PENDLETON MCAS (MUNN FLD) (KNFG)

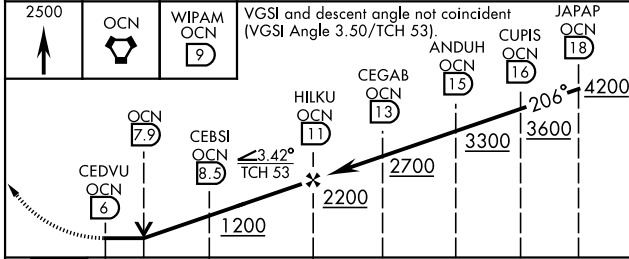
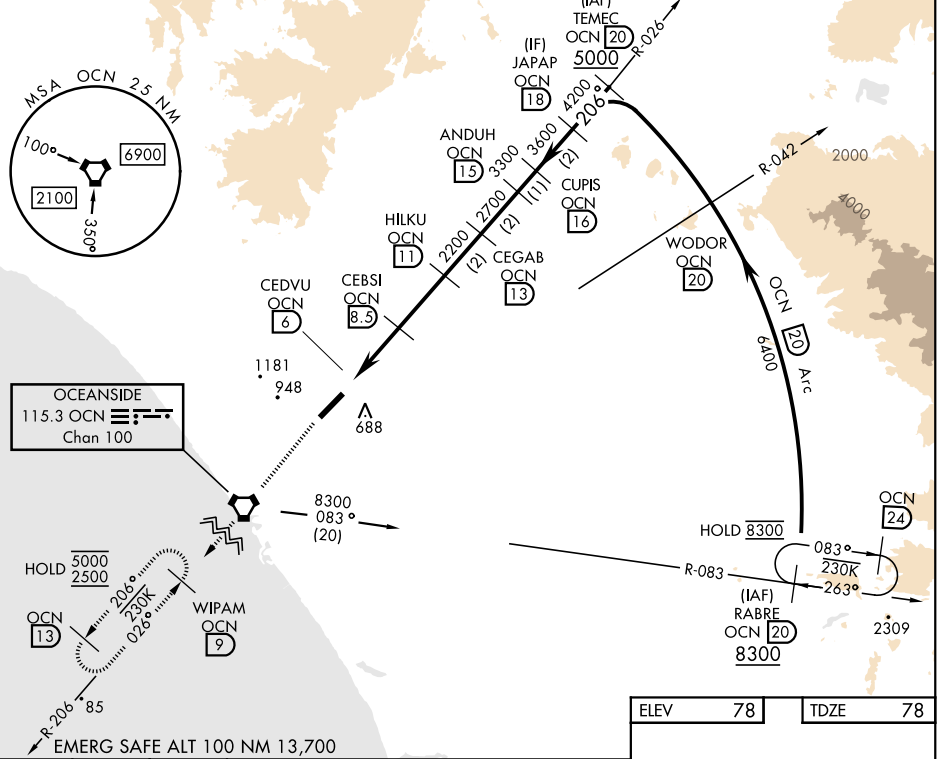
* When ALS inop, increase CAT A vis to 1½ miles,
 CAT B vis to 1½ miles, CAT CD vis to 3 miles.
 ** Circling Rwy 3 not authorized at night when VGSI inop.

SALSF
A2

MISSED APPROACH: Climb to 2500 direct OCN
VORTAC then direct WIPAM and hold.

ATIS ★ 285.45	APP CON 127.3 323.0	TOWER ★ 128.775 340.2	GND CON 134.675 360.2	CLNC DEL 134.675 271.6	ASR \ PAR
-------------------------	-------------------------------	---------------------------------	---------------------------------	----------------------------------	-----------

Visibility reduction by helicopters not authorized.



ELEV	78	TDZE	78
------	----	------	----

206°
 A2
 P
 TWR
 6005 x 221
 HIRL Rwy 3-21

CATEGORY	A	B	C	D
S-21 *	1120-1 1042 (1100-1)	1120-1½ 1042 (1100-1½)	1120-2½	1042 (1100-2½)
CIRCLING **	1120-1½ 1042 (1100-1½)	1260-1½ 1182 (1200-1½)	1500-3	1422 (1500-3)

OCEANSIDE, CALIFORNIA

33° 18' N-117° 21' W

CAMP PENDLETON MCAS (MUNN FLD) (KNFG)

Amtd 6 12JUN25

VOR/DME or TACAN Y RWY 21

SW-3, 16 APR 2026 to 14 MAY 2026

SW-3, 16 APR 2026 to 14 MAY 2026