

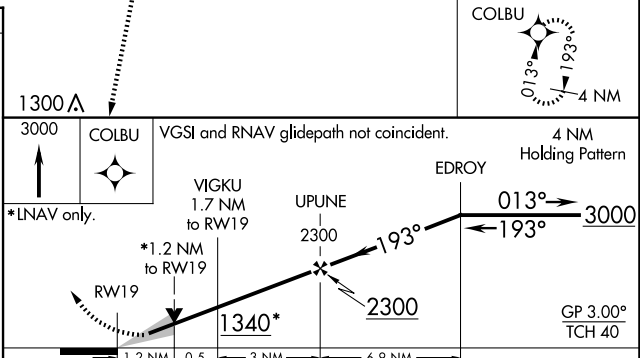
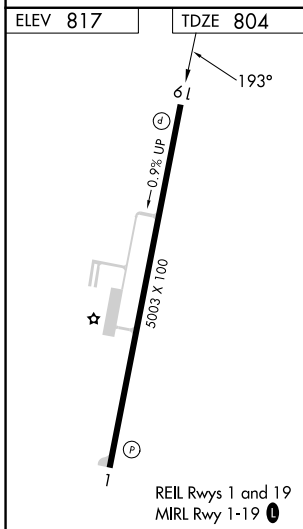
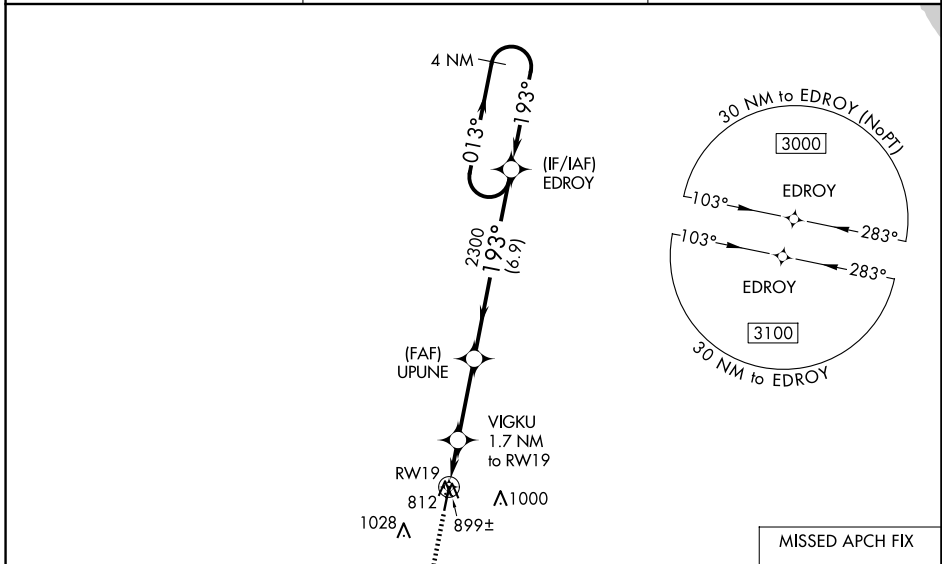
WAAS CH 40324 W19A	APP CRS 193°	Rwy Idg TDZE Apt Elev	5003 804 817
--	------------------------	-----------------------------	---

RNAV (GPS) RWY 19

DOUGLAS HUNTER FLD (1M5)

RNP APCH.	<p>▼ For uncompensated Baro-VNAV systems, LNAV/VNAV NA below -16°C or above 54°C. Baro-VNAV and VDP NA when using Bowling Green altimeter setting. When local altimeter setting not received, use Bowling Green altimeter setting and increase LPV DA to 1144 and all visibilities ¼ mile; increase all LNAV/VNAV DA to 1184 and all visibilities ¼ mile; increase all MDA 100 feet and increase LNAV Cat C/D visibility ⅜ mile.</p>	MISSED APPROACH: Climb to 3000 direct COLBU and hold.
-----------	--	---

AWOS-3PT 118.175	NASHVILLE APP CON 119.35 372.0	UNICOM 122.975 (CTAF)
----------------------------	--	---------------------------------



CATEGORY	A	B	C	D
LPV DA		1054-1	250 (300-1)	
LNAV/VNAV DA		1094-1½	290 (300-1½)	
LNAV MDA		1160-1	356 (400-1)	

SE-1, 16 APR 2026 to 14 MAY 2026

SE-1, 16 APR 2026 to 14 MAY 2026