

LOC I-SOZ 108.7	APP CRS 246°	Rwy Ldg TDZE Apt Elev	5002 2240 2275
---------------------------	------------------------	-----------------------------	---

LOC RWY 25

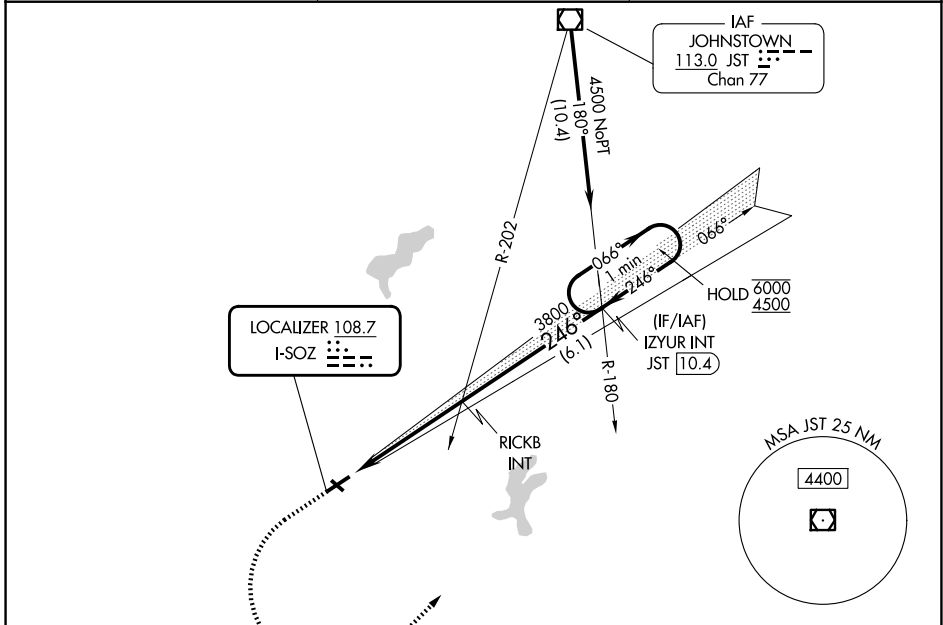
SOMERSET COUNTY (2G9)

DME required.

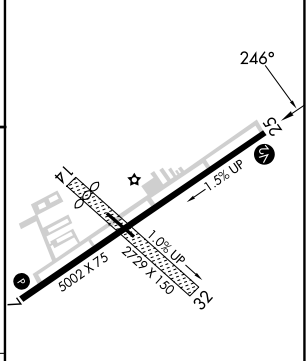
▼ Rwy 25 helicopter visibility reduction below 1 SM NA.
▲ Circling NA to Rwys 14 and 32. Procedure NA at night.

MISSED APPROACH: Climb to 3400 then climbing left turn to 4500 on heading 055° and JST VOR/DME R-180 to IZYUR INT/JST 10.4 DME and hold.

AWOS-3P 133.8	JOHNSTOWN APP CON ★ 121.2 299.2	UNICOM 122.8 (CTAF)
-------------------------	---	-------------------------------



ELEV 2275	TDZE 2240
-----------	-----------



3400	4500	JST R-180	IZYUR INT	IZYUR INT JST 10.4	One Minute Holding Pattern
↑	hdg 055°				
RICKB INT		IZYUR INT		6000 / 4500	
3800		246°		066°	
4.9 NM		6.1 NM			

CATEGORY	A	B	C	D
S-25	2860-1	620 (600-1)	2860-1¾	620 (600-1¾)
CIRCLING	2860-1 585 (600-1)	2920-1 645 (700-1)	3520-3	1245 (1300-3)

MIRL Rwy 7-25	
REIL Rwys 7 and 25	
FAF to MAP 4.9 NM	
Knots	60 90 120 150 180
Min:Sec	4:54 3:16 2:27 1:58 1:38

NE-4, 16 APR 2026 to 14 MAY 2026

NE-4, 16 APR 2026 to 14 MAY 2026