

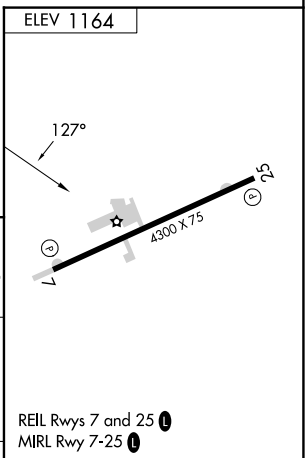
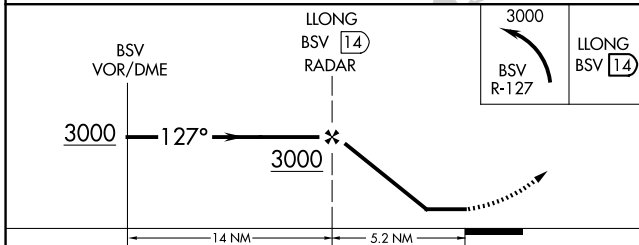
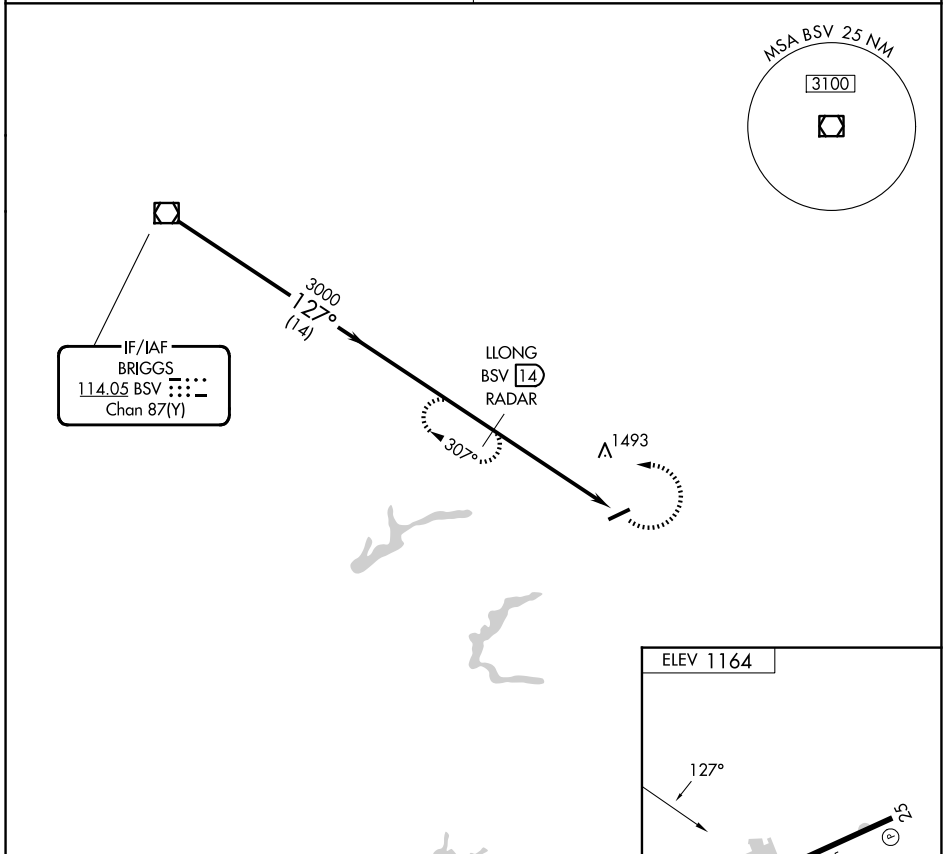
VOR/DME BSV <b>114.05</b> Chan <b>87</b> (Y)	APP CRS <b>127°</b>	Rwy Ldg TDZE Apt Elev <b>1164</b>	<b>N/A</b> <b>N/A</b> <b>1164</b>
--	------------------------	--------------------------------------	---

# VOR-A

CARROLL COUNTY/TOLSON (T50)

DME or RADAR required.	MISSED APPROACH: Climbing left turn to 3000 on BSV VOR/DME R-127 to LLONG/BSV 14 DME/RADAR and hold.
Procedure NA at night. Use Akron-Canton altimeter setting; when not received, use New Philadelphia altimeter setting and increase MDA 20 feet.	

CLEVELAND APP CON ★ <b>125.5 371.875</b>	UNICOM <b>122.7</b> (CTAF) <b>1</b>
---	--



CATEGORY	A	B	C	D	FAF to MAP 5.2 NM					
CIRCLING	1940-1	777 (800-1)	NA		Knots	60	90	120	150	180
					Min:Sec	5:12	3:28	2:36	2:05	1:44

# VOR-A

EC-2, 16 APR 2026 to 14 MAY 2026

EC-2, 16 APR 2026 to 14 MAY 2026