

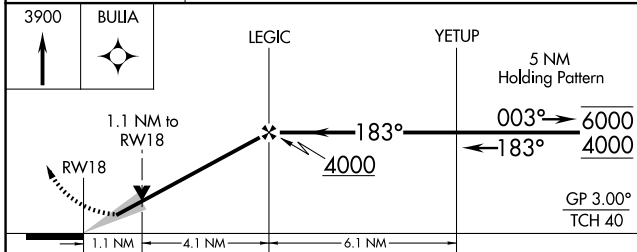
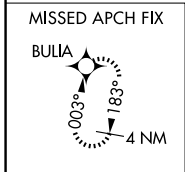
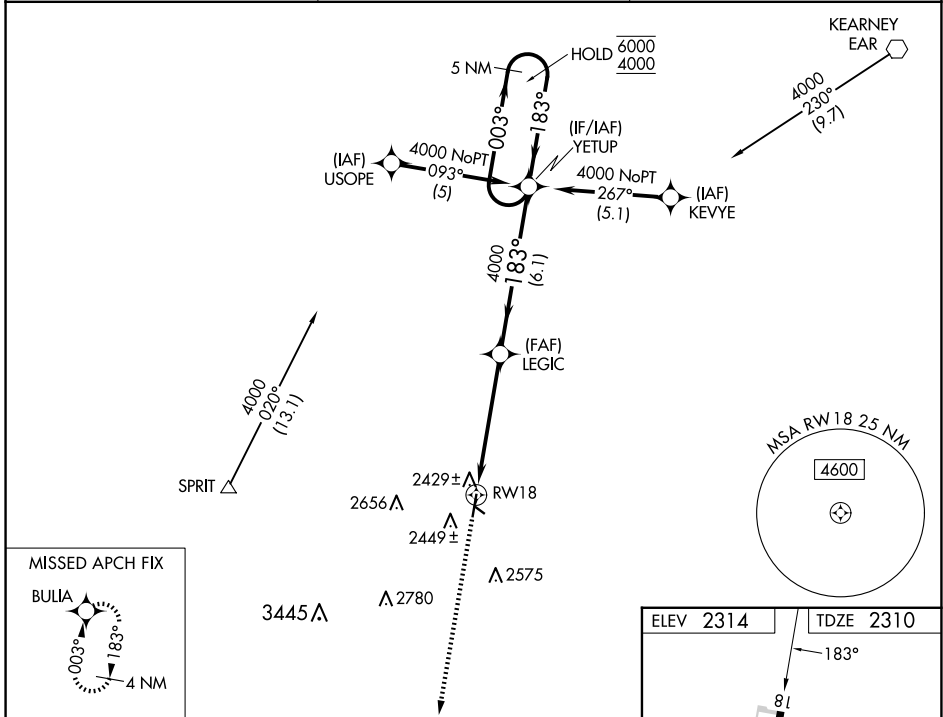
WAAS CH <b>73002</b> <b>W18A</b>	APP CRS <b>183°</b>	Rwy Ldg TDZE Apt Elev	<b>4701</b> <b>2310</b> <b>2314</b>
--	------------------------	-----------------------------	---

# RNAV (GPS) RWY 18

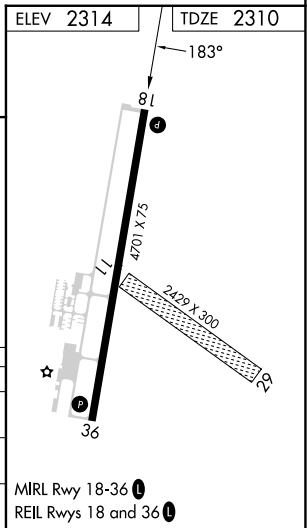
BREWSTER FLD (HDE)

RNP APCH - GPS.	MISSED APPROACH: Climb to 3900 direct BULIA and hold.
<p>⚠ Circling NA to Rwy 11 and 29. VDP NA when using EAR altimeter setting.</p> <p>⚠ When local altimeter setting not received, use EAR altimeter setting and increase LPV DA to 2637 feet and all visibilities ¼ SM. Increase all MDAs 80 feet and LNAV visibility Cat C/D ⅜ SM, and Circling visibility Cat C/D ¼ SM.</p>	

AWOS-3 <b>121.325</b>	DENVER CENTER <b>132.7 226.675</b>	UNICOM <b>122.8 (CTAF) 0</b>
--------------------------	---------------------------------------	---------------------------------



CATEGORY	A	B	C	D
LPV DA		2560-1	250 (300-1)	
LNAV MDA		2680-1	370 (400-1)	
CIRCLING	2840-1 526 (600-1)	2880-1 566 (600-1)	3020-2 706 (800-2)	3020-2¼ 706 (800-2¼)



MIRL Rwy 18-36 0  
REIL Rwy 18 and 36 0

NC-2, 16 APR 2026 to 14 MAY 2026

NC-2, 16 APR 2026 to 14 MAY 2026