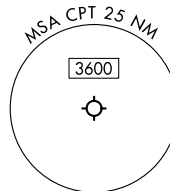


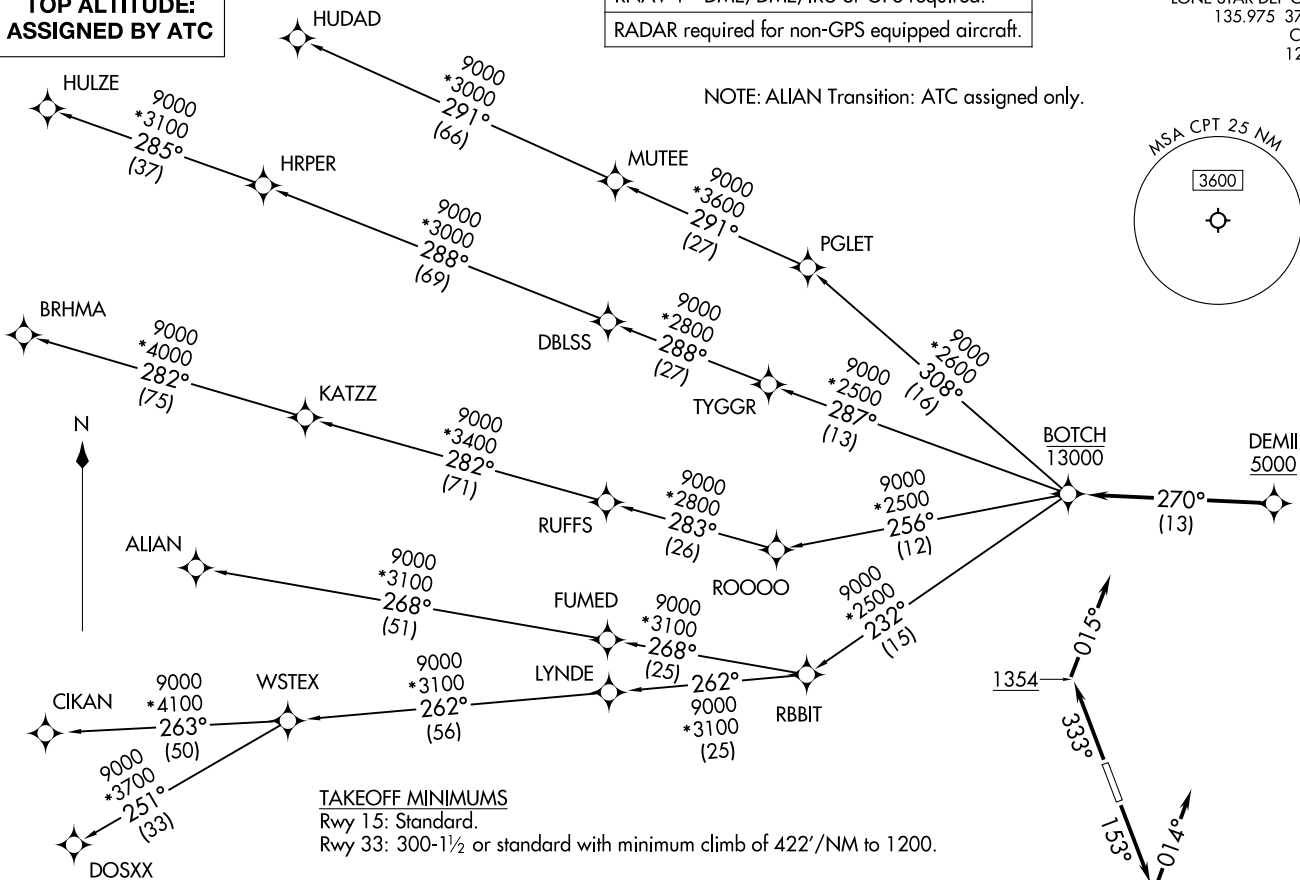
RNAV 1 - DME/DME/IRU or GPS required.
RADAR required for non-GPS equipped aircraft.

LONE STAR DEP CON
135.975 379.9
CTAF
122.8



NOTE: ALIAN Transition: ATC assigned only.

**TOP ALTITUDE:
ASSIGNED BY ATC**



TAKEOFF MINIMUMS

Rwy 15: Standard.
Rwy 33: 300-1½ or standard with minimum climb of 422'/NM to 1200.

NOTE: Chart not to scale.

(CONTINUED ON FOLLOWING PAGE)

BOTCH ONE DEPARTURE (RNAV)
(BOTCH1 .BOTCH) 17ZAPR25

CLEBURNE, TEXAS
CLEBURNE RGNL (CPT)

(BOTCH1 .BOTCH) 25107
BOTCH ONE DEPARTURE (RNAV)

AL-6000 (FAA)
CLEBURNE, TEXAS
CLEBURNE RGNL (CPT)

BOTCH ONE DEPARTURE (RNAV)



DEPARTURE ROUTE DESCRIPTION

TAKEOFF RUNWAY 15: Climb on heading 153° to 1354, then on heading 014° or as assigned by ATC, for vectors to cross DEMII at or above 5000, thence. . .

TAKEOFF RUNWAY 33: Climb on heading 333° to 1354, then on heading 015° or as assigned by ATC, for vectors to cross DEMII at or above 5000, thence. . .

. . . on track 270° to cross BOTCH at or below 13000, then on (transition). Maintain ATC assigned altitude, expect filed altitude 10 minutes after departure.

ALIAN TRANSITION (BOTCH1.ALIAN)

BRHMA TRANSITION (BOTCH1.BRHMA)

CIKAN TRANSITION (BOTCH1.CIKAN)

DOSXX TRANSITION (BOTCH1.DOSXX)

HUDAD TRANSITION (BOTCH1.HUDAD)

HULZE TRANSITION (BOTCH1.HULZE)

WSTEX TRANSITION (BOTCH1.WSTEX)

SC-2, 16 APR 2026 to 14 MAY 2026

SC-2, 16 APR 2026 to 14 MAY 2026