

KUSSO TWO DEPARTURE (RNAV)  
(KUSSO2.KUSSO) 22JAN26

LONE STAR DEP CON  
135.975 379.9  
CTAF  
122.8

RNAV 1 - DME/DME/IRU or GPS.

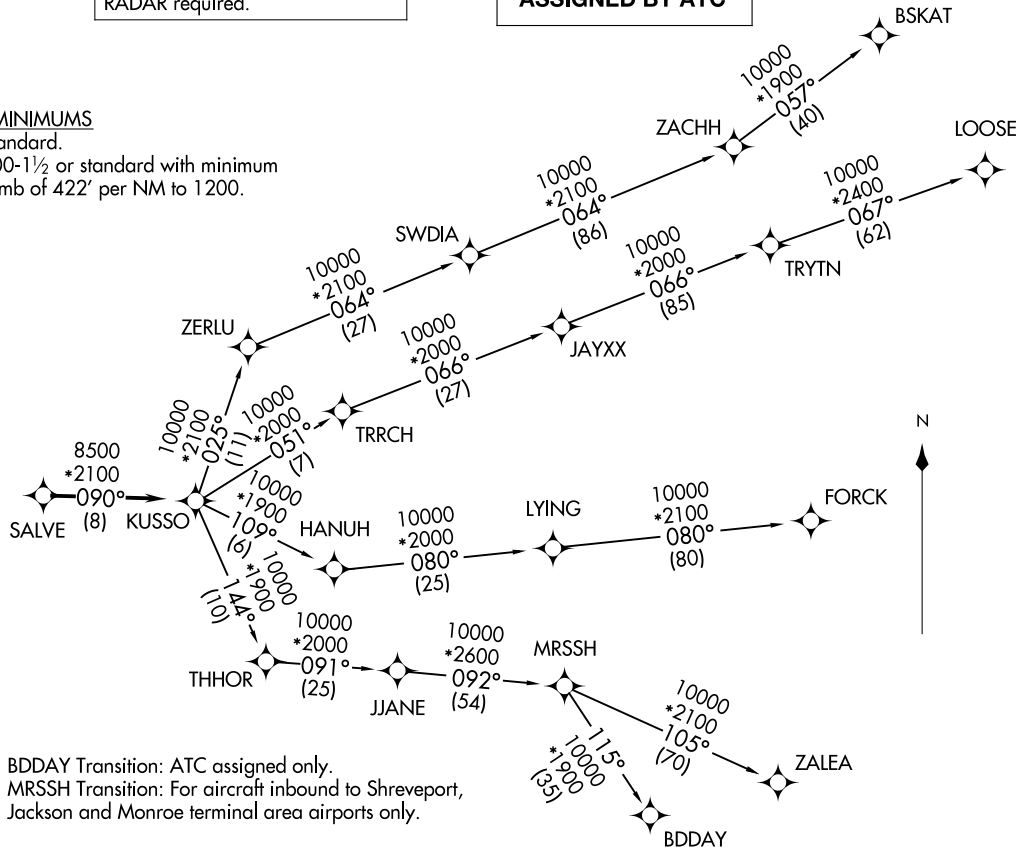
RADAR required.

**TOP ALTITUDE:  
ASSIGNED BY ATC**

TAKEOFF MINIMUMS

Rwy 15: Standard.

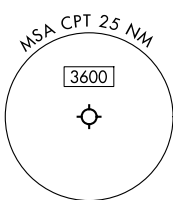
Rwy 33: 300-1½ or standard with minimum  
climb of 422' per NM to 1200.



NOTE: BDDAY Transition: ATC assigned only.  
NOTE: MRSSH Transition: For aircraft inbound to Shreveport,  
Jackson and Monroe terminal area airports only.

(CONTINUED ON FOLLOWING PAGE)

NOTE: Chart not to scale.



CLEBURNE, TEXAS  
CLEBURNE RGNL (CPT)

(KUSSO2.KUSSO) 26022  
KUSSO TWO DEPARTURE (RNAV)

AL-6000 (FAA)

CLEBURNE, TEXAS  
CLEBURNE RGNL (CPT)

# KUSSO TWO DEPARTURE (RNAV)



## DEPARTURE ROUTE DESCRIPTION

When entering controlled airspace, fly heading assigned by ATC, expect vector to SALVE, then on track 090° to KUSSO, then on assigned transition. Maintain ATC assigned altitude, expect filed altitude 10 minutes after departure.

- BDDAY TRANSITION (KUSSO2.BDDAY)
- BSKAT TRANSITION (KUSSO2.BSKAT)
- FORCK TRANSITION (KUSSO2.FORCK)
- LOOSE TRANSITION (KUSSO2.LOOSE)
- MRSSH TRANSITION (KUSSO2.MRSSH)
- ZALEA TRANSITION (KUSSO2.ZALEA)

SC-2, 16 APR 2026 to 14 MAY 2026

SC-2, 16 APR 2026 to 14 MAY 2026