

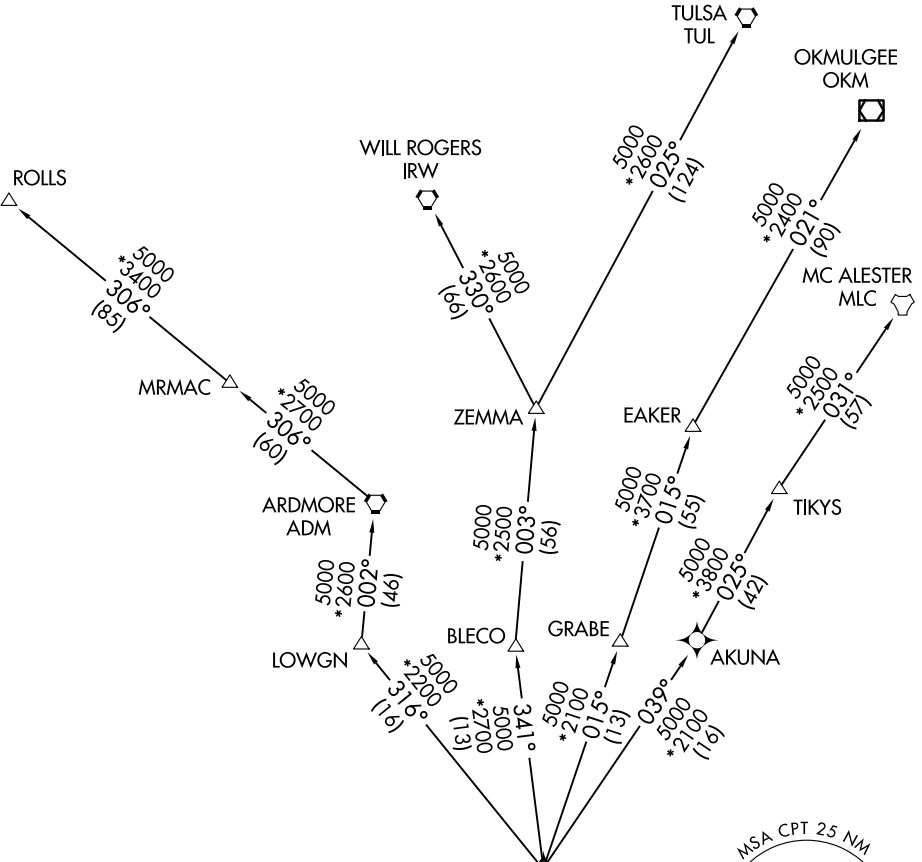
NANDR THREE DEPARTURE (RNAV)

LONE STAR DEP CON
135.975 379.9

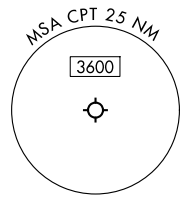
RNAV 1 - DME/DME/IRU or GPS.

RADAR required.

**TOP ALTITUDE:
ASSIGNED BY ATC**



NOTE: EAKER Transition: For TUL terminal arrivals only.
 NOTE: TULSA Transition: For all aircraft overflying TUL VORTAC.
 NOTE: Aircraft arriving to the Oklahoma City terminal area, file and expect the ZEMMA enroute transition.



TAKEOFF MINIMUMS
 Rwy 15: Standard.
 Rwy 33: 300-1½ or standard with minimum climb of 422' /NM to 1200.



NOTE: Chart not to scale.

(CONTINUED ON FOLLOWING PAGE)

SC-2, 16 APR 2026 to 14 MAY 2026

SC-2, 16 APR 2026 to 14 MAY 2026

NANDR THREE DEPARTURE (RNAV)



DEPARTURE ROUTE DESCRIPTION

TAKEOFF RUNWAY 15: Climb on heading 153° or as assigned by ATC, thence. . .
TAKEOFF RUNWAY 33: Climb on heading 333° or as assigned by ATC, thence. . .

. . . expect RADAR vectors to cross CUZNO at or above 3000, then on track 357°
to cross NANDR at or below 13000, then on assigned transition.

- EAKER TRANSITION (NANDR3.EAKER)
- MC ALESTER TRANSITION (NANDR3.MLC)
- OKMULGEE TRANSITION (NANDR3.OKM)
- ROLLS TRANSITION (NANDR3.ROLLS)
- TULSA TRANSITION (NANDR3.TUL)
- WILL ROGERS TRANSITION (NANDR3.IRW)
- ZEMMA TRANSITION (NANDR3.ZEMMA)

SC-2, 16 APR 2026 to 14 MAY 2026

SC-2, 16 APR 2026 to 14 MAY 2026