

VORTAC VXV <b>116.4</b> Chan <b>111</b>	APP CRS <b>102°</b>	Rwy Idg TDZE Apt Elev	<b>5506</b> <b>1014</b> <b>1014</b>
---	------------------------	-----------------------------	---

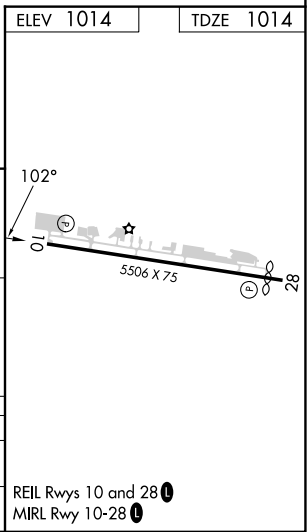
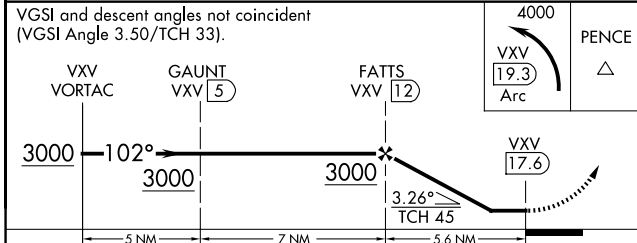
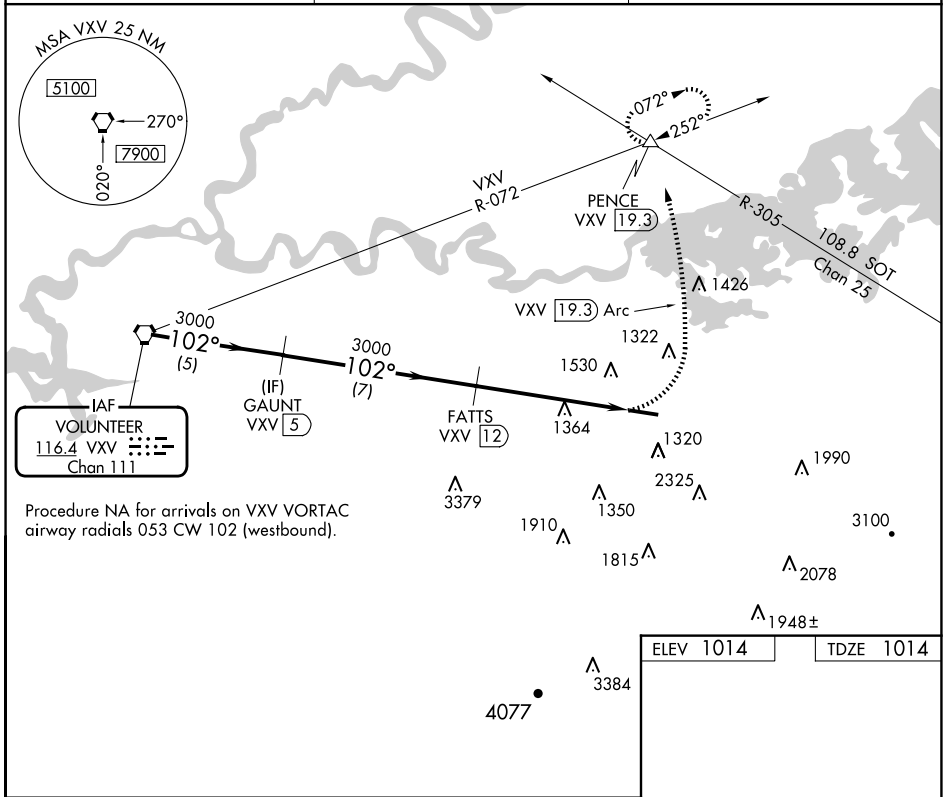
# VOR/DME RWY 10

GATLINBURG-PIGEON FORGE (GKT)

**Procedure NA at night. Helicopter visibility reduction below 1 SM NA.**  
When local altimeter setting not received, use Mc Ghee Tyson altimeter setting and increase all MDAs 60 feet and S-10 visibility Cat A 1/4 SM.

**MISSED APPROACH:** Climbing left turn to 4000 on VXV VORTAC 19.3 DME CCW Arc to PENCE INT/VXV 19.3 DME and hold, continue climb-in-hold to 4000.

AWOS-3 <b>126.875</b>	KNOXVILLE APP CON <b>132.8 360.8</b>	UNICOM <b>123.0 (CTAF)</b>
--------------------------	---	-------------------------------



CATEGORY	A	B	C	D
S-10	1840-1 826 (900-1)	1840-1¼ 826 (900-1¼)	1840-2½ 826 (900-2½)	1840-2¾ 826 (900-2¾)
CIRCLING	1840-1¼ 826 (900-1¼)	1880-1¼ 866 (900-1¼)	2040-3 1026 (1100-3)	2680-3 1666 (1700-3)

SE-1, 16 APR 2026 to 14 MAY 2026

SE-1, 16 APR 2026 to 14 MAY 2026