

APP CRS	Rwy Idg	5001
079°	TDZE	350
	Apt Elev	355

RNAV (GPS) RWY 8

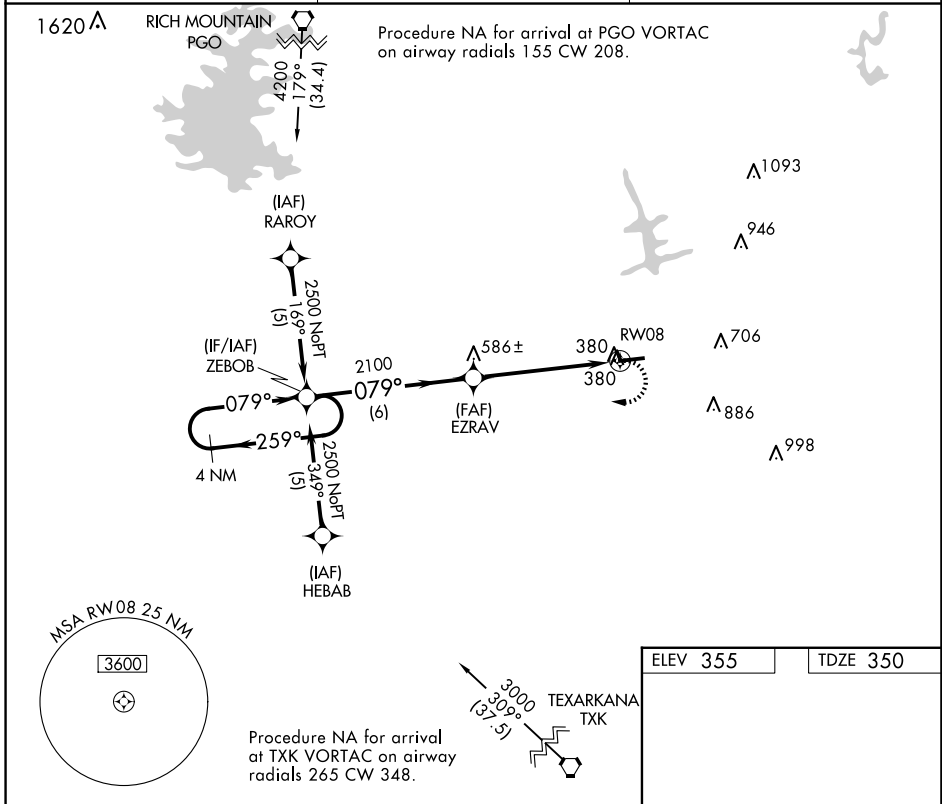
J LYNN HELMS SEVIER COUNTY (DEQ)

RNP APCH-GPS.

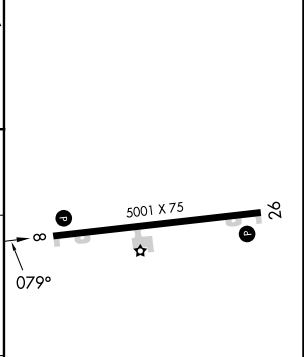
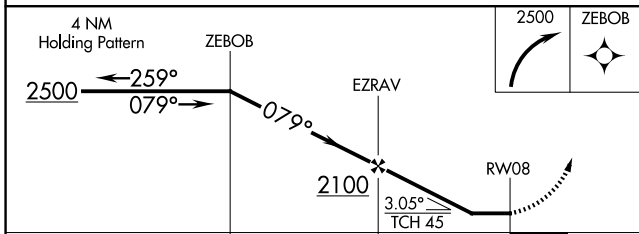
⚠ When local altimeter setting not received, use TXK altimeter and increase all MDAs 100 feet. Rwy 8 helicopter visibility reduction below $\frac{3}{4}$ SM NA. Circling Rwy 26 NA at night.

MISSED APPROACH: Climbing right turn to 2500 direct ZEBOB and hold.

ASOS 134.075	FORT WORTH CENTER 123.925 269.475	UNICOM 122.8 (CTAF) 0
------------------------	---	---------------------------------



ELEV 355	TDZE 350
----------	----------



CATEGORY	A	B	C	D
LNVA MDA	780-1	430 (500-1)	NA	
CIRCLING	900-1 545 (600-1)	920-1 565 (600-1)	NA	

REIL Rwy 8 and 26 0

MIRL Rwy 8-26 0

SC-1, 16 APR 2026 to 14 MAY 2026

SC-1, 16 APR 2026 to 14 MAY 2026