

APP CRS <b>179°</b>	Rwy Ldg TDZE Apt Elev	<b>5000</b> <b>1316</b> <b>1321</b>
------------------------	-----------------------------	-------------------------------------------

# RNAV (GPS) RWY 18

FLOYD W JONES LEBANON (LBO)

RNP APCH - GPS.

**⚠** Baro-VNAV and VDP NA when using OZS altimeter setting. For uncompensated Baro-VNAV systems, LNAV/VNAV NA below -17°C or above 54°C. Rwy 18 helicopter visibility reduction below ¾ SM NA. When local altimeter setting not received, use OZS altimeter setting: increase LNAV/VNAV DA to 1717 feet and all visibilities ½ SM; increase all MDAs 100 feet and LNAV visibility Cats C and D ¼ SM, and Circling visibility Cats C and D ½ SM.

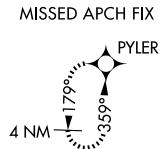
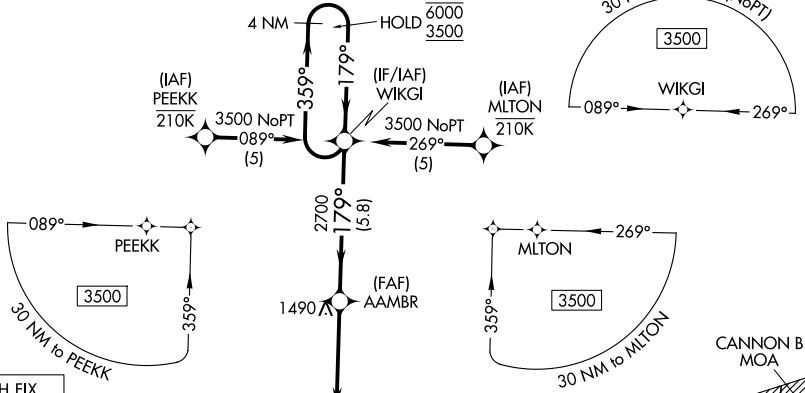
MISSED APPROACH: Climb to 3500 direct PYLER and hold.

AWOS-3PT  
**118.975**

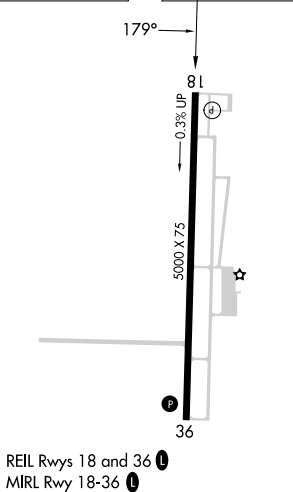
SPRINGFIELD APP CON  
**121.1 290.5**

CLNC DEL  
**123.725**

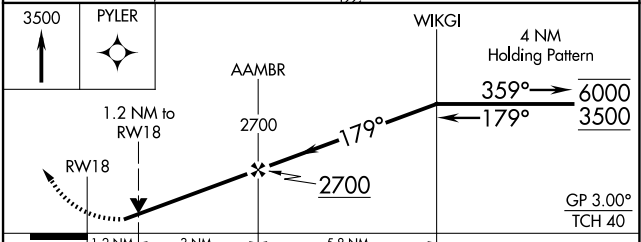
UNICOM  
**122.8 (CTAF) ①**



ELEV 1321 TDZE 1316



REIL Rwy 18 and 36 ①  
MIRL Rwy 18-36 ①



CATEGORY	A	B	C	D
LNAV/VNAV DA	1634-1 318 (400-1)			
LNAV MDA	1740-1	424 (500-1)	1740-1¼ 424 (500-1¼)	
CIRCLING	1780-1 459 (500-1)	1860-1 539 (600-1)	1980-1¾ 659 (700-1¾)	1980-2 659 (700-2)

NC-3, 16 APR 2026 to 14 MAY 2026

NC-3, 16 APR 2026 to 14 MAY 2026