

APP CRS	Rwy Ldg	5000
359°	TDZE	1321
	Apt Elev	1321

RNAV (GPS) RWY 36

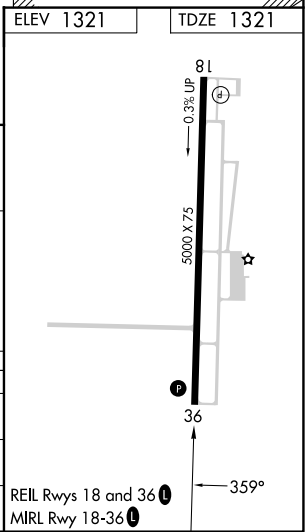
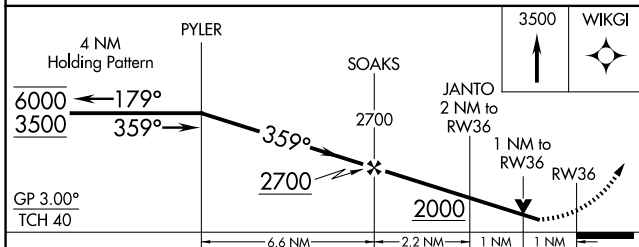
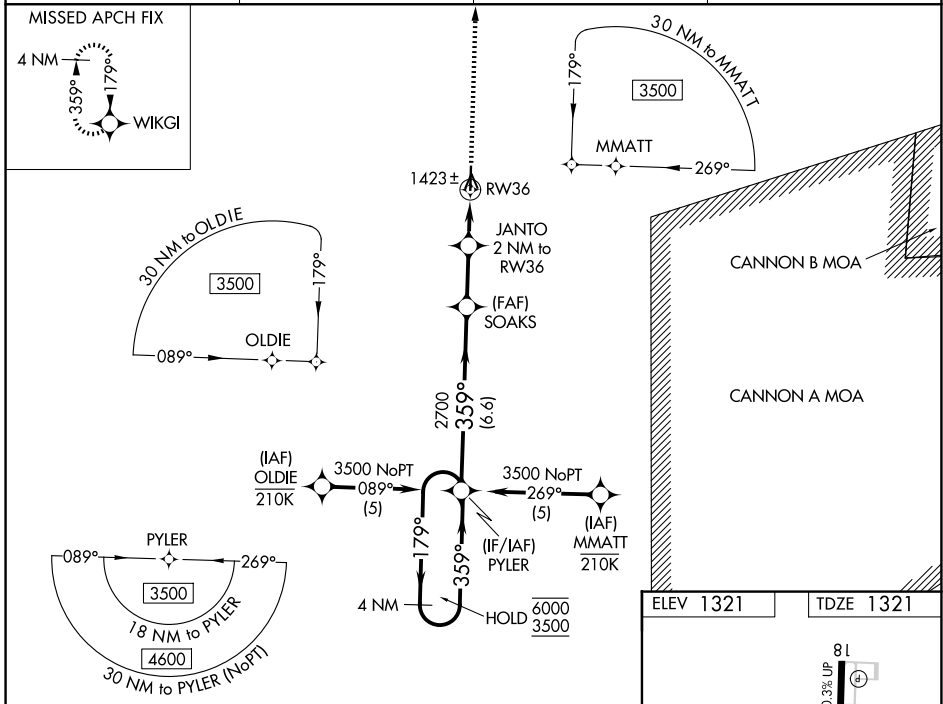
FLOYD W JONES LEBANON (LBO)

RNP APCH - GPS.

⚠ Baro-VNAV and VDP NA when using OZS altimeter setting. For uncompensated Baro-VNAV systems, LNAV/VNAV NA below -17°C or above 54°C. Rwy 36 helicopter visibility reduction below ¼ SM NA. When local altimeter setting not received, use OZS altimeter setting: increase LNAV/VNAV DA to 1675 feet; increase all MDAs 100 feet and LNAV visibility Cats C and D ¾ SM, and Circling visibility Cats C and D ½ SM.

MISSED APPROACH: Climb to 3500 direct WIKGI and hold.

AWOS-3PT 118.975	SPRINGFIELD APP CON 121.1 290.5	CLNC DEL 123.725	UNICOM 122.8 (CTAF) 0
----------------------------	---	----------------------------	---------------------------------



CATEGORY	A	B	C	D
LNAV/VNAV DA	1592-1		271 (300-1)	
LNAV MDA	1680-1		359 (400-1)	
CIRCLING	1780-1 459 (500-1)	1860-1 539 (600-1)	1980-1¾ 659 (700-1¾)	1980-2 659 (700-2)

REIL Rwy 18 and 36 0
MRL Rwy 18-36 0

NC-3, 16 APR 2026 to 14 MAY 2026

NC-3, 16 APR 2026 to 14 MAY 2026