

NDB CFJ	APP CRS	Rwy Ldg	<b>5506</b>
<b>388</b>	<b>044°</b>	TDZE	<b>797</b>
		Apt Elev	<b>800</b>

# NDB RWY 5

CRAWFORDSVILLE RGNL (CFJ)

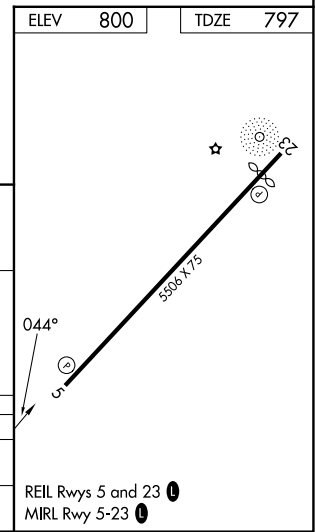
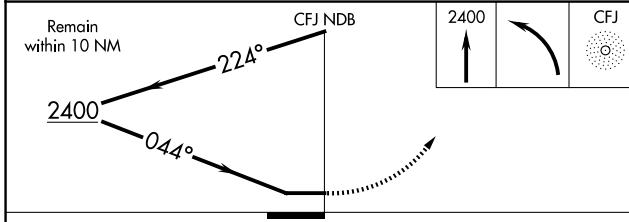
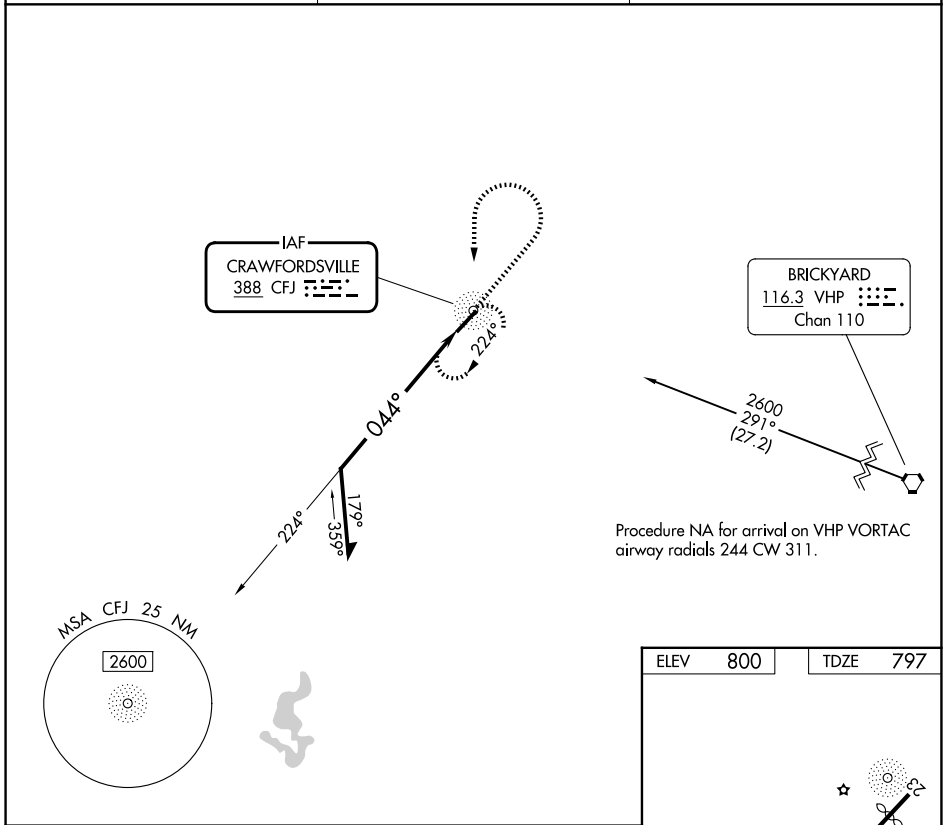
**NA** Rwy 5 helicopter visibility reduction below  $\frac{3}{4}$  NA. When local altimeter setting not received, use GPC altimeter setting: increase all MDAs 60 feet and S-5 and Circling visibility Cats C and D  $\frac{1}{4}$  SM.

**MISSED APPROACH:** Climb to 2400 then left turn direct CFJ NDB and hold.

AWOS-3PT  
**125.65**

INDIANAPOLIS APP CON  
**119.05 317.8**

UNICOM  
**122.8 (CTAF)**



CATEGORY	A	B	C	D
S-5	1420-1	623 (700-1)	1420-1 $\frac{3}{4}$	623 (700-1 $\frac{3}{4}$ )
CIRCLING	1420-1	620 (700-1)	1440-1 $\frac{3}{4}$ 640 (700-1 $\frac{3}{4}$ )	1520-2 $\frac{1}{4}$ 720 (800-2 $\frac{1}{4}$ )

EC-2, 16 APR 2026 to 14 MAY 2026

EC-2, 16 APR 2026 to 14 MAY 2026