

WAAS CH <b>62832</b> <b>W31A</b>	APP CRS <b>305°</b>	Rwy Ldg TDZE Apt Elev	<b>5152</b> <b>350</b> <b>358</b>
--	------------------------	-----------------------------	---

# RNAV (GPS) RWY 31

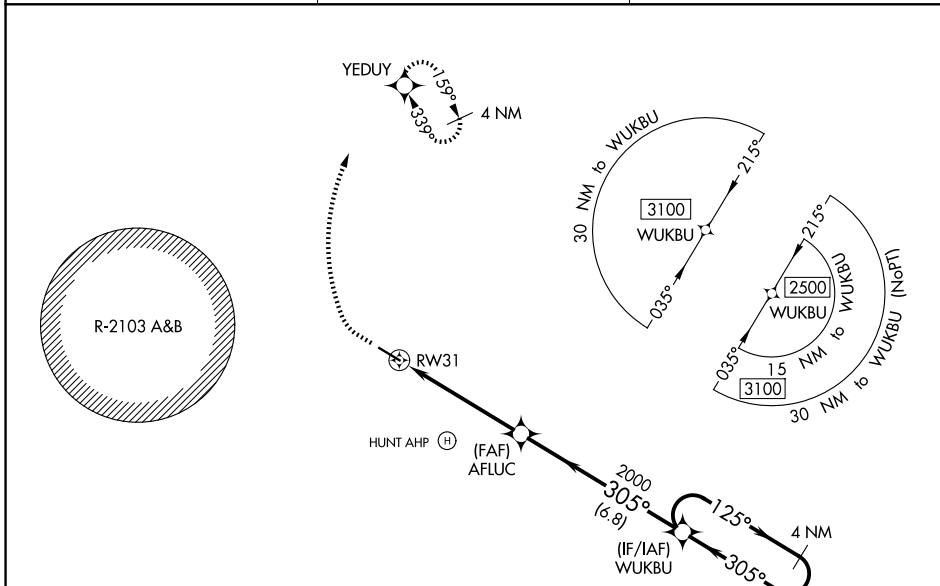
OZARK/BLACKWELL FLD (71J)

RNP APCH.

▼ Baro-VNAV NA. Use Dothan altimeter setting; when not received, use Cairns AAF (Fort Rucker) altimeter setting.  
 ▲ NA Rwy 31 helicopter visibility reduction below ¾ SM NA. Circling Rwy 13, 31 NA at night.

MISSED APPROACH: Climb to 900 then climbing right turn to 2000 direct YEDUY and hold.

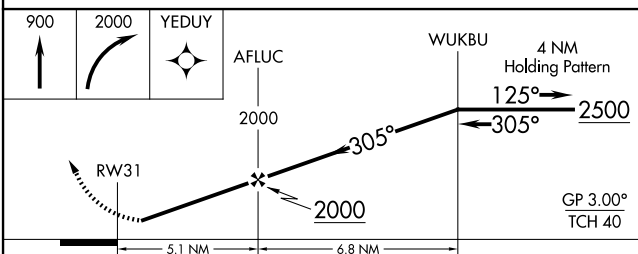
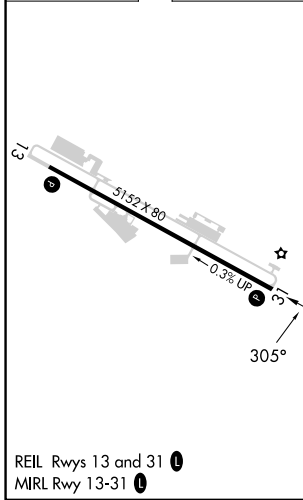
DHN ASOS <b>135.725</b>	CAIRNS APP CON ★ <b>125.4 327.125</b>	UNICOM <b>122.7 (CTAF) 0</b>
----------------------------	--	---------------------------------



SE-4, 16 APR 2026 to 14 MAY 2026

SE-4, 16 APR 2026 to 14 MAY 2026

ELEV 358	TDZE 350
----------	----------



CATEGORY	A	B	C	D
LPV DA	661-1 310 (400-1)			NA
LNAV/VNAV DA	851-1¾ 501 (500-1¾)			NA
LNAV MDA	860-1	510 (600-1)	860-1⅞ 510 (600-1⅞)	NA
CIRCLING	900-1 542 (600-1)	1100-1¾ 742 (800-1¾)	1100-2¼ 742 (800-2¼)	NA