

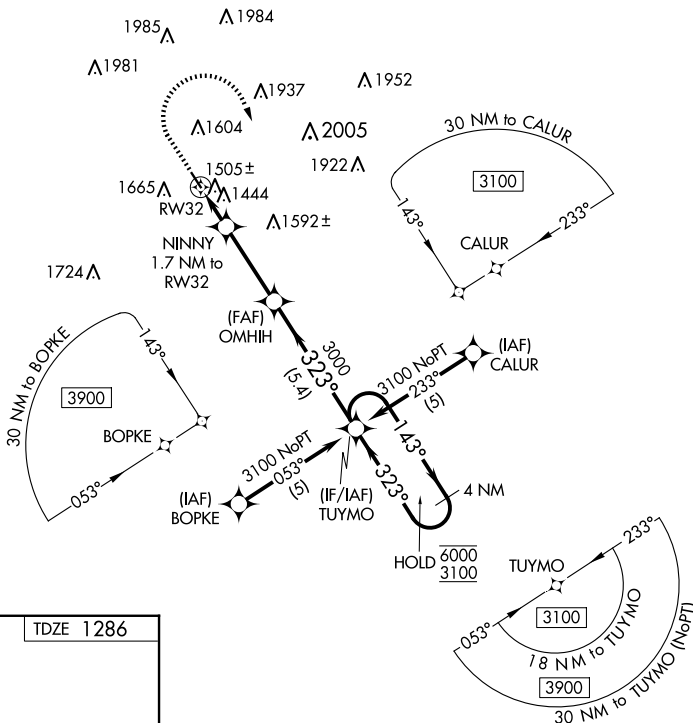
APP CRS 323°	Rwy Idg 3641
	TDZE 1286
	Apt Elev 1288

RNAV (GPS) RWY 32

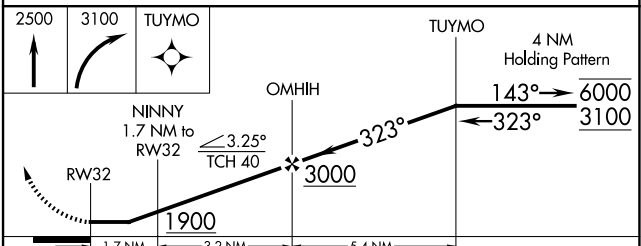
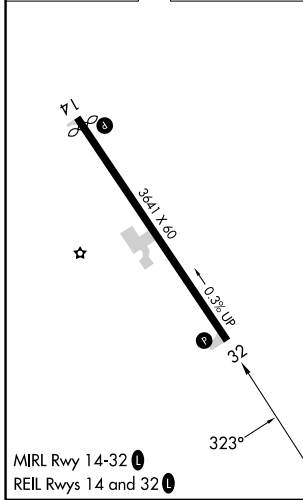
AUDUBON COUNTY (ADU)

RNP APCH - GPS.	<p>When local altimeter setting not received, procedure NA. Rwy 32 helicopter visibility reduction below 3/4 SM NA. Circling Rwy 14 NA at night.</p>	<p>MISSED APPROACH: Climb to 2500 then climbing right turn to 3100 direct TUYMO and hold.</p>
-----------------	--	---

AWOS-3 118.075	MINNEAPOLIS CENTER 119.6 290.4	UNICOM 122.8 (CTAF) 1
--------------------------	--	---------------------------------



ELEV 1288	TDZE 1286
-----------	-----------



CATEGORY	A	B	C	D
LNAV MDA	1760-1	474 (500-1)	NA	
CIRCLING	1980-1	692 (700-1)	NA	

NC-3, 16 APR 2026 to 14 MAY 2026

NC-3, 16 APR 2026 to 14 MAY 2026