

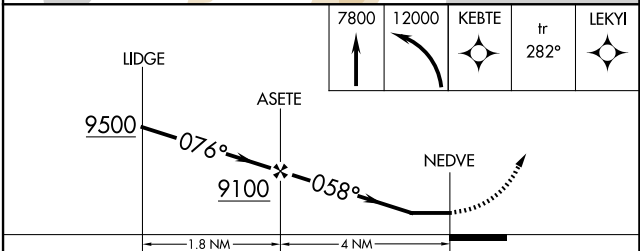
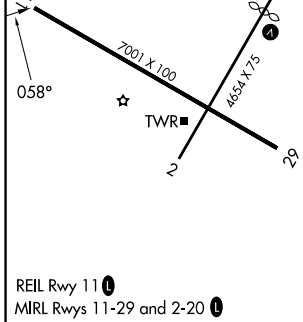
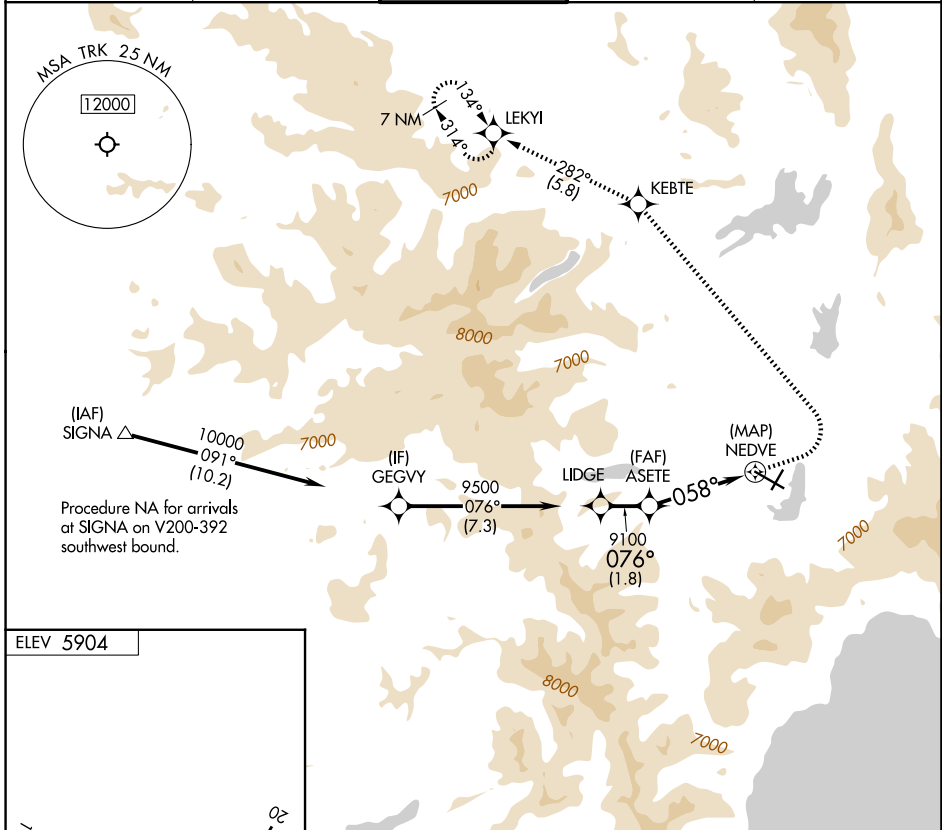
APP CRS <b>058°</b>	Rwy Ldg TDZE Apt Elev	<b>N/A</b> <b>N/A</b> <b>5904</b>
------------------------	-----------------------------	---

# RNAV (GPS)-A

## TRUCKEE-TAHOE (TRK)

RNP APCH.	MISSED APPROACH: (Do not exceed 200K until KEBTE) Climb to 7800 then climbing left turn to 12000 direct KEBTE and track 282° to LEKY1 and hold, continue climb-in-hold 12000.
<p>▼ Circling NA for Cat C south of Rwy 29 and east of Rwy 2.</p> <p>⚠ Procedure NA at night. When local altimeter setting not received, procedure NA.</p> <p>❄ -17°C</p>	

D-ATIS <b>118.0</b>	OAKLAND CENTER <b>127.95 316.1</b>	TRUCKEE TOWER * <b>120.575 (CTAF) 0</b>	GND CON <b>118.3</b>	UNICOM <b>122.95</b>
------------------------	---------------------------------------	--	-------------------------	-------------------------



CATEGORY	A	B	C	D
CIRCLING	7500-1¼ 1596 (1600-1¼)	7500-1½ 1596 (1600-1½)	7700-3 1796 (1800-3)	NA

SW-2, 16 APR 2026 to 14 MAY 2026

SW-2, 16 APR 2026 to 14 MAY 2026