

(JEWLZ2.JEWLZ) 26022

JEWLZ TWO DEPARTURE (RNAV)

AL-6022 (FAA-O)

STELLAR AIRPARK (P19)
CHANDLER, ARIZONA

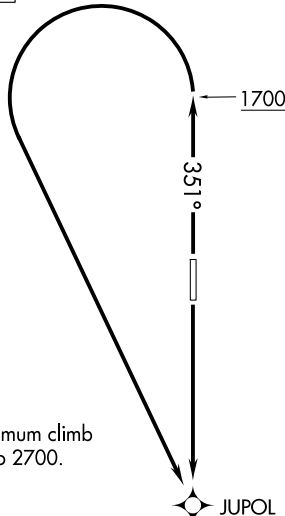
**TOP ALTITUDE:
AS ASSIGNED BY ATC**

RNAV 1 - GPS.

PHOENIX DEP CON
123.7 363.0
CTAF
122.975

TAKEOFF MINIMUMS

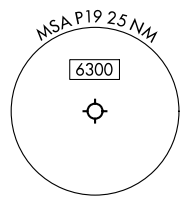
Rwy 17: Standard.
Rwy 35: Standard with minimum climb
of 250' per NM to 2700.



JUPOL

JEWLZ
3700 200K

CHANDLER MUNI



CODEX
5000

4000
241°
(7)

4000
111°
(7)

JIPON
5000

NOTE: Chart not to scale.

DEPARTURE ROUTE DESCRIPTION

TAKEOFF RUNWAY 17: Climb direct JUPOL, thence. . . .

TAKEOFF RUNWAY 35: Climb on heading 351° to 1700, then left turn direct JUPOL, thence. . . .

. . . .on track 171° to cross JEWLZ at or above 3700. Do not exceed 200K until passing JEWLZ. Maintain ATC assigned altitude. Expect filed altitude 10 minutes after departure.

CODEX TRANSITION (JEWLZ2.CODEX)

JIPON TRANSITION (JEWLZ2.JIPON)

JEWLZ TWO DEPARTURE (RNAV)
(JEWLZ2.JEWLZ) 22JAN26

CHANDLER, ARIZONA
STELLAR AIRPARK (P19)

SW-4, 16 APR 2026 to 14 MAY 2026

SW-4, 16 APR 2026 to 14 MAY 2026