

WAAS CH <b>93934</b> <b>W02A</b>	APP CRS <b>021°</b>	Rwy Ldg TDZE <b>718</b> Apt Elev <b>718</b>	<b>5001</b>
--	------------------------	---	-------------

# RNAV (GPS) RWY 2

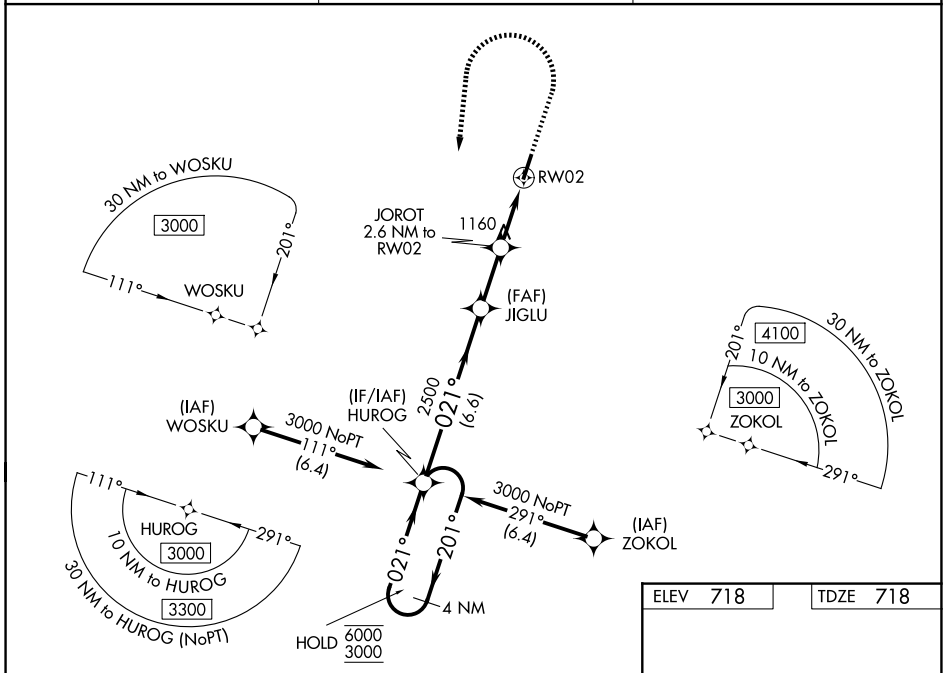
ELLINGTON (LUG)

RNP APCH - GPS.

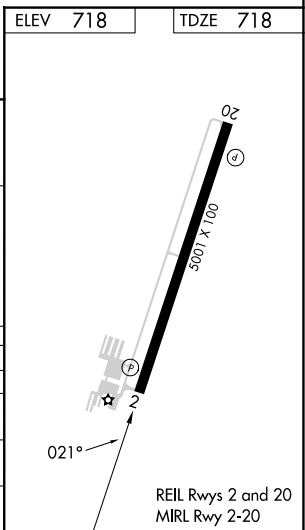
Baro-VNAV and VDP NA when using BNA altimeter setting. Circling Rwy 20 NA at night. Rwy 2 helicopter visibility reduction below 3/4 SM NA. When local altimeter setting not received, use BNA altimeter setting and increase LPV DA to 1096 feet and all visibilities 1/8 SM. Increase LNAV/VNAV DA to 1531 feet and all visibilities 1/2 SM. Increase all MDAs 120 feet and LNAV visibility Cat B 1/4 SM, Cats C and D 1/2 SM, Circling visibility Cats A and B 1/4 SM and Cat C 1/2 SM. For uncompensated Baro-VNAV systems, LNAV/VNAV NA below -16°C or above 54°C.

**MISSED APPROACH:**  
Climb to 1300 then climbing left turn to 3000 direct HUROG and hold.

AWOS-3 <b>135.775</b>	MEMPHIS CENTER <b>128.15 323.125</b>	UNICOM <b>122.8 (CTAF)</b>
--------------------------	---	-------------------------------



4 NM Holding Pattern		HUROG	1300	3000	HUROG
6000	← 201°	→ 021°			
3000					
GP 3.30°	TCH 55				
		HUROG	JIGLU	JOROT	RWY 2
		2500	2500	2.6 NM to RWY 2	1.8 NM to RWY 2
		6.6 NM	2.3 NM	0.8 NM	1.8 NM
CATEGORY	A	B	C	D	
LPV DA	993-7/8	275 (300-7/8)		NA	
LNAV/VNAV DA	1428-2	710 (800-2)		NA	
LNAV MDA	1420-1	702 (800-1)	1420-2	702 (800-2)	
CIRCLING	1420-1 702 (800-1)	1480-1 762 (800-1)	1540-2 1/2 822 (900-2 1/2)	1640-3 922 (1000-3)	



SE-1, 16 APR 2026 to 14 MAY 2026

SE-1, 16 APR 2026 to 14 MAY 2026