

WAAS CH 53615 W29A	APP CRS 284°	Rwy Idg TDZE 5500 96 Apt Elev 107
--	------------------------	---

RNAV (GPS) RWY 29

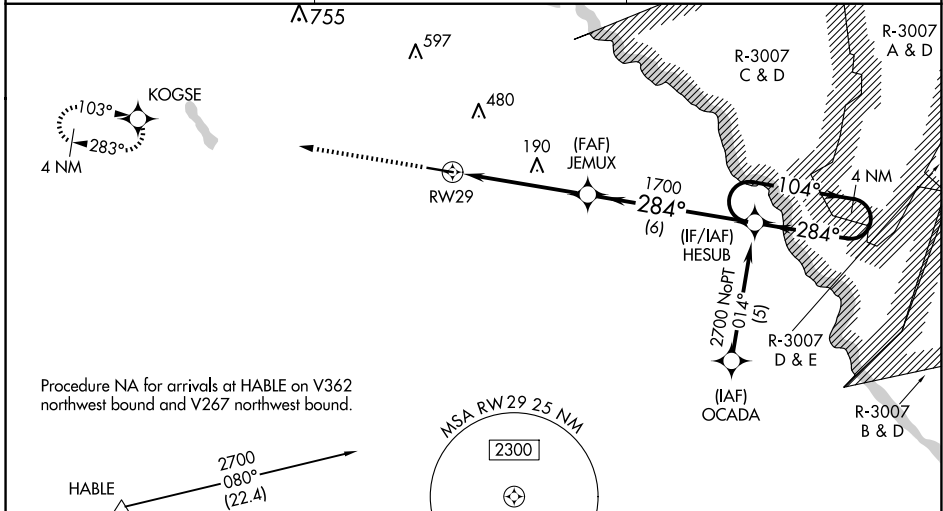
JESUP-WAYNE COUNTY (JES)

RNP APCH.

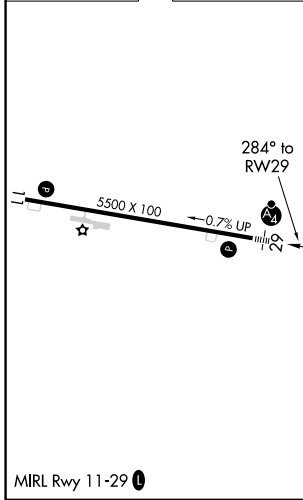
⚠ Baro-VNAV and VDP NA when using Savannah/Hilton Head Intl altimeter setting.
⚠ For uncompensated Baro-VNAV systems, LNAV/VNAV NA below -15°C (5°F) or above 48°C (118°F). Rwy 29 helicopter visibility reduction below 3/4 SM NA. When local altimeter setting not received, use Savannah/Hilton Head Intl altimeter setting: increase LPV DA to 485 and LNAV/VNAV DA to 542; increase all MDA 140 feet and visibility LNAV Cat C 3/4 SM, Cat D 1/2 SM, and Circling Cat C/D 1/2 SM. Inop table does not apply to LPV and LNAV/VNAV all Cats and LNAV Cats A/B. For inop ALS, increase LNAV Cat C visibility to 1 1/8 SM. For inop ALS when using Savannah/Hilton Head Intl altimeter setting, increase LPV all Cats visibility to 1 1/8 SM and LNAV/VNAV all Cats visibility to 1 3/8 SM.

MALSF MISSED APPROACH: Climb to 2700 direct KOGSE and hold.

AWOS-3PT 118.125	JACKSONVILLE CENTER 126.75 277.4	UNICOM 122.8 (CTAF)
----------------------------	--	-------------------------------



ELEV 107	TDZE 96
----------	---------



2700 KOGSE VGSI and RNAV glidepath not coincident (VGSI Angle 3.00/TCH 37). HESUB 4 NM Holding Pattern

*LNAV only. *1.2 NM to RW29

JEMUX

284° to RW29

1700

284°

104°

2700

GP 3.00° TCH 45

CATEGORY	A	B	C	D
LPV DA		364-1	268 (300-1)	
LNAV/VNAV DA		421-1 1/4	325 (400-1 1/4)	
LNAV MDA		500-1 404 (400-1)		500-1 1/4 404 (400-1 1/4)
CIRCLING	520-1 413 (500-1)	560-1 453 (500-1)	780-2 673 (700-2)	780-2 1/4 673 (700-2 1/4)

SE-4, 16 APR 2026 to 14 MAY 2026

SE-4, 16 APR 2026 to 14 MAY 2026