

MMALT SEVEN DEPARTURE (RNAV)

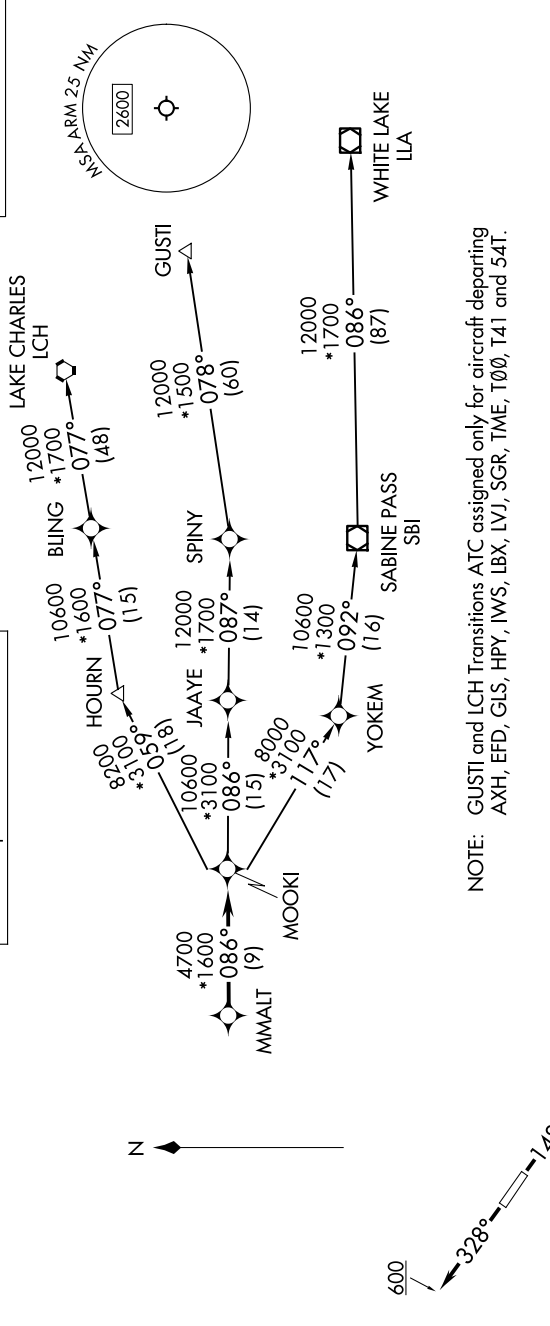
WHARTON, TEXAS

SC-5, 16 APR 2026 to 14 MAY 2026

HOUSTON DEP CON
128.6 360.85

RNAV 1 - DME/DME/IRU or GPS.
RADAR required.

TOP ALTITUDE:
ASSIGNED BY ATC



NOTE: GUSTI and LCH Transitions ATC assigned only for aircraft departing AXH, EFD, GLS, HPY, IWS, LBX, LVJ, SGR, TME, T00, T41 and 54T.

DEPARTURE ROUTE DESCRIPTION

▼ TAKEOFF RUNWAY 14: Climb on heading 148° to 600, for RADAR vectors to MMALT, thence. . . .
 TAKEOFF RUNWAY 32: Climb on heading 328° to 600, for RADAR vectors to MMALT, thence. . . .
 . . . on track 086° to MOOKI, then on (transition). Maintain ATC assigned altitude.
 Expect filed altitude 10 minutes after departure.

GUSTI TRANSITION (MMALT7.GUSTI)
 LAKE CHARLES TRANSITION (MMALT7.LCH)
 WHITE LAKE TRANSITION (MMALT7.LLA)

TAKEOFF MINIMUMS
 Rwy 14, 32: Standard with minimum
 climb of 500°/NM to 600.

NOTE: Chart not to scale.

MMALT SEVEN DEPARTURE (RNAV)

WHARTON, TEXAS

WHARTON RGNL (ARM)

SC-5, 16 APR 2026 to 14 MAY 2026