

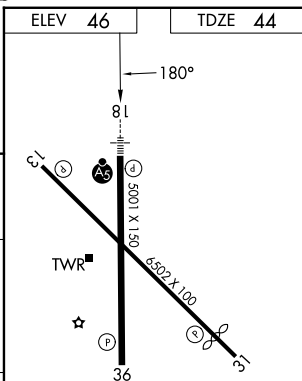
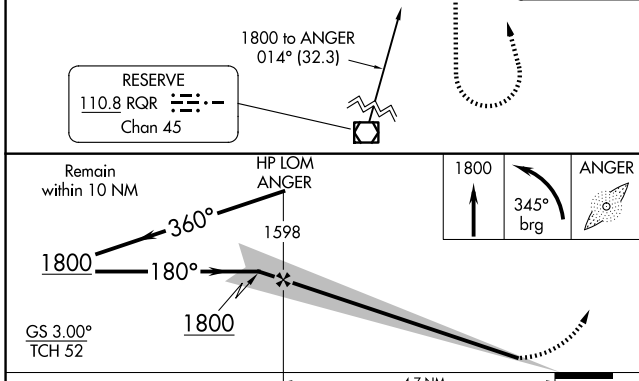
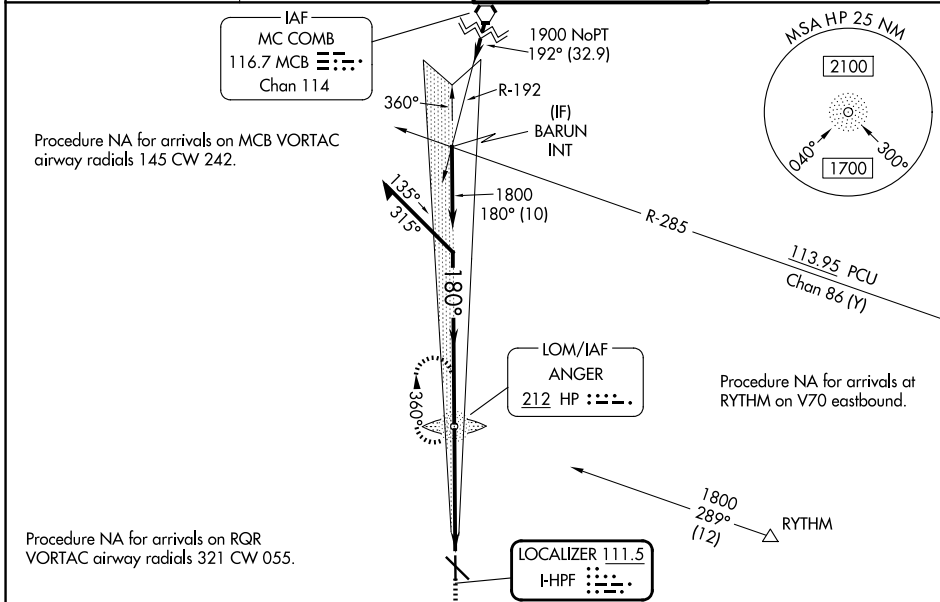
LOC I-HPF 111.5	APP CRS 180°	Rwy Ldg 5001
		TDZE 44
		Apt Elev 46

ILS or LOC RWY 18

HAMMOND NORTHSORE RGNL (HDC)

ADF required.	MALSR A5	MISSED APPROACH: Climb to 1800 then left turn on 345° bearing to ANGER LOM and hold.
<p>▼ For inop ALS, increase S-LOC 18 Cat C/D visibility to 1 3/8 SM. When local altimeter setting not received, use Louis Armstrong New Orleans Intl altimeter setting and increase S-ILS 18 DA to 339 feet; increase all MDAs 100 feet and S-LOC 18 visibility Cat C/D 1/4 SM, and Circling visibility Cat C/D 1/2 SM. For inop ALS when using Louis Armstrong New Orleans Intl altimeter setting, increase S-ILS all Cats visibility to 3/8 SM.</p>		

ATIS 118.325	NEW ORLEANS APP CON 119.3 350.35	HAMMOND TOWER ★ 120.575 (CTAF) 0	GND CON 119.85
------------------------	--	--	--------------------------



CATEGORY	A	B	C	D
S-ILS 18	250-1/2 206 (300-1/2)			
S-LOC 18	540-1/2	496 (500-1/2)	540-1	496 (500-1)
CIRCLING	540-1	494 (500-1)	620-1 1/2 574 (600-1 1/2)	920-2 3/4 874 (900-2 3/4)

REIL Rwy 13, 31 and 36	MIRL Rwy 13-31 and 18-36				
FAF to MAP 4.7 NM					
Knots	60	90	120	150	180
Min:Sec	4:42	3:08	2:21	1:53	1:34

SC-4, 16 APR 2026 to 14 MAY 2026

SC-4, 16 APR 2026 to 14 MAY 2026