


WAAS CH 45818 W18A	APP CRS 180°	Rwy Ldg TDZE Apt Elev	5001 44 46
--	------------------------	-----------------------------	---------------------------------------

RNAV (GPS) RWY 18

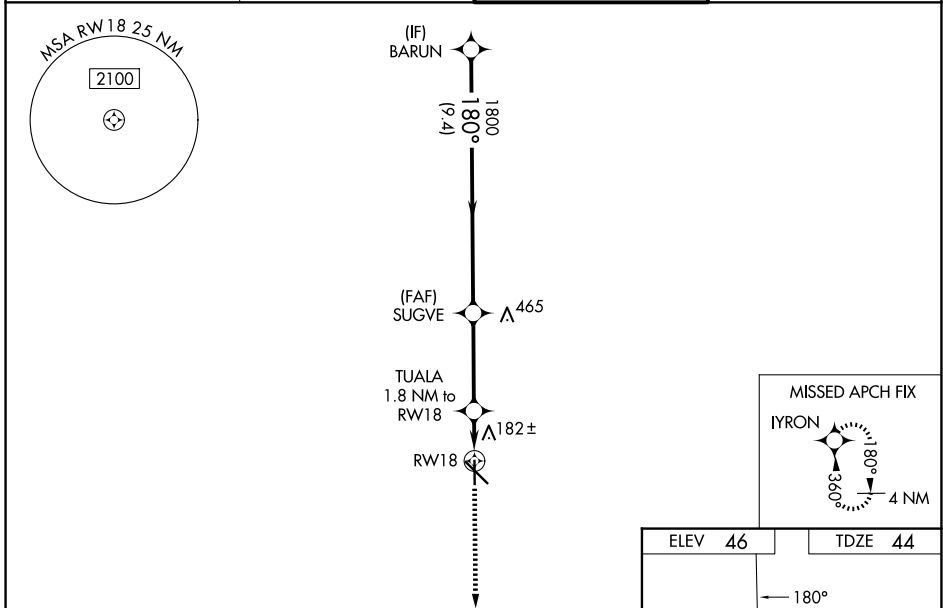
HAMMOND NORTHSHORE RGNL (HDC)



RNP APCH - GPS.

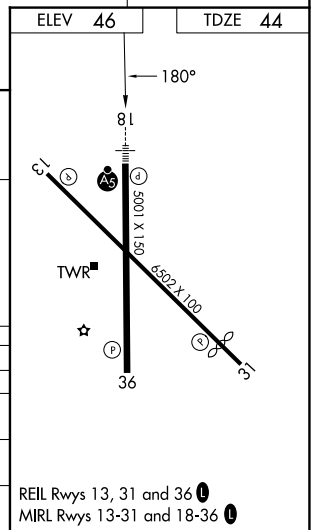
▼ Baro-VNAV and VDP NA when using Louis Armstrong New Orleans Intl altimeter setting. For uncompensated Baro-VNAV systems, LNAV/VNAV NA below -15°C or above 54°C. When local altimeter setting not received, use Louis Armstrong New Orleans Intl altimeter setting and increase LPV DA to 339 feet; increase LNAV/VNAV DA to 555 feet and all visibilities ¼ SM. Increase all MDAs 100 feet and LNAV visibility Cat C/D ½ SM, and Circling visibility Cat C/D ½ SM. For inop ALS when using Louis Armstrong New Orleans Intl altimeter increase LPV all Cats visibility to 7/8 SM; LNAV/VNAV all Cats visibility to 1 3/8 SM and LNAV Cats C/D visibility to 1 3/8 SM. For inop ALS increase LNAV/VNAV all Cats visibility to 1 ¼ SM and LNAV Cat C/D visibility to 1 1/8 SM.

MALSRS
 MISSED APPROACH: Climb to 2200 direct IYRON and hold.

ATIS 118.325	NEW ORLEANS APP CON 119.3 350.35	HAMMOND TOWER ★ 120.575 (CTAF) 	GND CON 119.85
------------------------	--	--	--------------------------



BARUN 1800 GP 3.00° TCH 52 SUGVE 1800 TUALA 1.8 NM to RWY 18 RWY 18 1.1 NM to RWY 18 660 9.4 NM 3.5 NM 0.7 NM 1.1 NM	2200 IYRON  			
	180° 180° 180° 180°			
CATEGORY	A	B	C	D
LPV DA	250-1/2		206 (300-1/2)	
LNAV/VNAV DA	466-3/4		422 (500-3/4)	
LNAV MDA	460-1/2	416 (500-1/2)	460-3/4	416 (500-3/4)
CIRCLING	500-1	454 (500-1)	620-1/2 574 (600-1/2)	920-2/4 874 (900-2 3/4)



SC-4, 16 APR 2026 to 14 MAY 2026

SC-4, 16 APR 2026 to 14 MAY 2026