

WAAS CH 42718 W36A	APP CRS 360°	Rwy Ldg TDZE Apt Elev	5001 42 46
--	------------------------	-----------------------------	---------------------------------------

RNAV (GPS) RWY 36

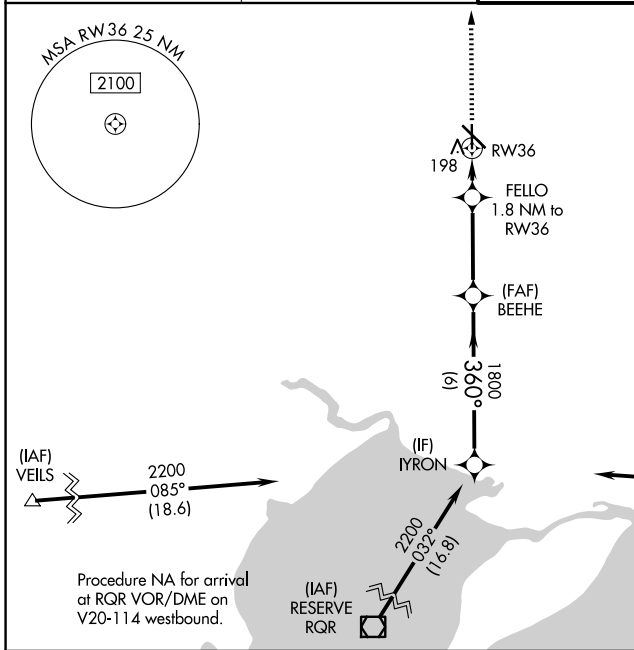
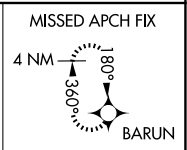
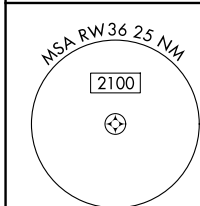
HAMMOND NORTHSORE RGNL (HDC)

RNP APCH - GPS.

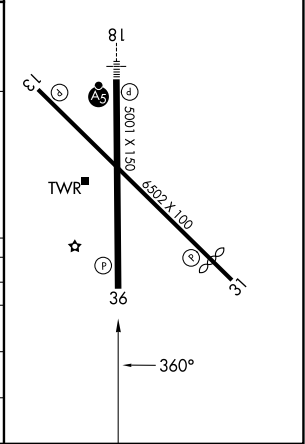
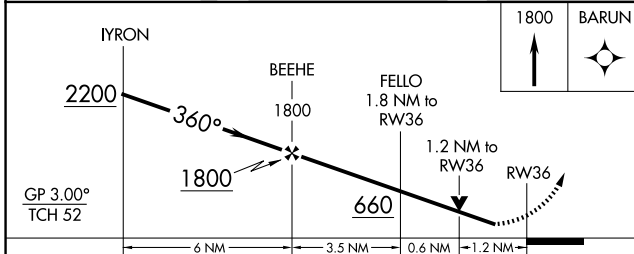
⚠ Baro-VNAV and VDP NA when using Louis Armstrong New Orleans Intl altimeter setting.
⚠ Rwy 36 helicopter visibility reduction below 3/4 SM NA. For uncompensated Baro-VNAV systems, LNAV/VNAV NA below -15°C or above 54°C. When local altimeter setting not received, use Louis Armstrong New Orleans Intl altimeter setting and increase LPV DA to 374 feet and all visibilities 1/4 SM; increase LNAV/VNAV DA to 528 feet and all visibilities 1/4 SM; increase all MDAs 100 feet and LNAV visibility Cat C/D 1/4 SM, and Circling visibility Cat C/D 1/2 SM.

MISSED APPROACH:
Climb to 1800 direct BARUN and hold.

ATIS 118.325	NEW ORLEANS APP CON 119.3 350.35	HAMMOND TOWER ★ 120.575 (CTAF) 0	GND CON 119.85
------------------------	--	--	--------------------------



ELEV 46	TDZE 42
REIL Rwy 13, 31 and 36	
MRL Rwy 13-31 and 18-36	



CATEGORY	A	B	C	D
LPV DA	292-3/4		250 (300-3/4)	
LNAV/VNAV DA	446-1 1/8		404 (400-1 1/8)	
LNAV MDA	460-1	418 (500-1)	460-1 1/8	418 (500-1 1/8)
CIRCLING	500-1	454 (500-1)	620-1 1/2 574 (600-1 1/2)	920-2 3/4 874 (900-2 3/4)

SC-4, 16 APR 2026 to 14 MAY 2026

SC-4, 16 APR 2026 to 14 MAY 2026