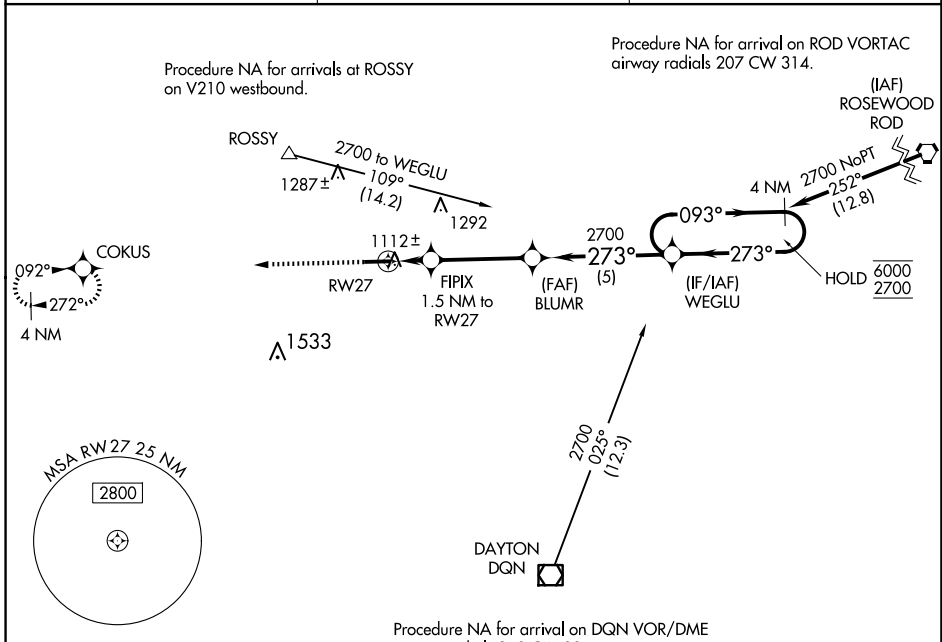


WAAS CH 86243 W27A	APP CRS 273°	Rwy Idg TDZE Apt Elev	4802 1007 1007
---------------------------------	------------------------	-----------------------------	---

RNAV (GPS) RWY 27

DARKE COUNTY (VES)

RNP APCH. ▼ Rwy 27 helicopter visibility reduction below 1 SM NA. Straight-in Rwy 27 NA at night, Circling Rwy 27 NA at night.		MISSED APPROACH: Climb to 2700 direct COKUS and hold.
AWOS-3PT 125.9	COLUMBUS APP CON 134.45 352.05	UNICOM 122.8 (CTAF) 0



ELEV 1007	TDZE 1007
-----------	-----------

4802 X 75

273°

2700 COKUS

BLUMR

WEGLU

4 NM Holding Pattern

FIPIX 1.5 NM to RW27

3.00° TCH 45

1540

2700

273°

093°

6000

2700

CATEGORY	A	B	C	D
LP MDA	1380-1	373 (400-1)		NA
LNAV MDA	1380-1	373 (400-1)		NA
C CIRCLING	1440-1 433 (500-1)	1480-1 473 (500-1)	1660-1¾ 653 (700-1¾)	NA

EC-2, 16 APR 2026 to 14 MAY 2026

EC-2, 16 APR 2026 to 14 MAY 2026