

WAAS CH <b>77642</b> <b>W09A</b>	APP CRS <b>092°</b>	Rwy Idg TDZE <b>1007</b> Apt Elev <b>1007</b>	<b>4802</b> <b>1007</b> <b>1007</b>
--	------------------------	---	---

# RNAV (GPS) RWY 9

DARKE COUNTY (VES)

RNP APCH - GPS.

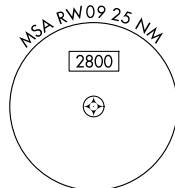
▼ Circling Rwy 27 NA at night. Rwy 9 helicopter visibility reduction below  $\frac{3}{4}$  SM NA.  
For uncompensated Baro-VNAV systems, LNAV/VNAV NA below -16° C or above 54° C.

MISSED APPROACH:  
Climb to 2700 direct  
WEGLU and hold.

AWOS-3PT  
**125.9**

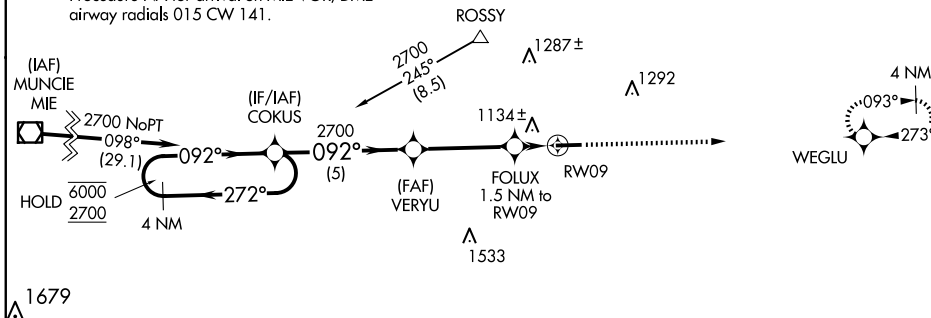
COLUMBUS APP CON  
**134.45 352.05**

UNICOM  
**122.8 (CTAF) 0**



Procedure NA for arrivals at  
ROSSY on V55 southeast bound  
and V210 eastbound.

Procedure NA for arrival on MIE VOR/DME  
airway radials 015 CW 141.

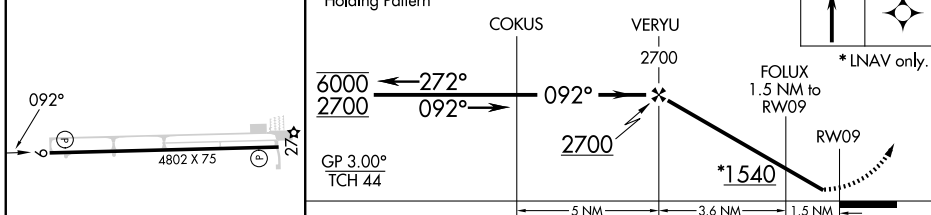


ELEV 1007	TDZE 1007
-----------	-----------

Procedure NA for arrival on DQN VOR/DME  
airway radials 234 CW 008.



4 NM Holding Pattern VGSi and RNAV glidepath not coincident (VGSi Angle 3.00/TCH 38).



CATEGORY	A	B	C	D
LPV DA	1257-1 250 (300-1)			NA
LNAV/VNAV DA	1400-1 $\frac{1}{8}$ 393 (400-1 $\frac{1}{8}$ )			NA
LNAV MDA	1400-1	393 (400-1)	1400-1 $\frac{1}{8}$ 393 (400-1 $\frac{1}{8}$ )	NA
<b>C</b> CIRCLING	1440-1 433 (500-1)	1480-1 473 (500-1)	1660-1 $\frac{3}{4}$ 653 (700-1 $\frac{3}{4}$ )	NA

REIL Rwy 9 and 27 **0**  
MIRL Rwy 9-27 **0**