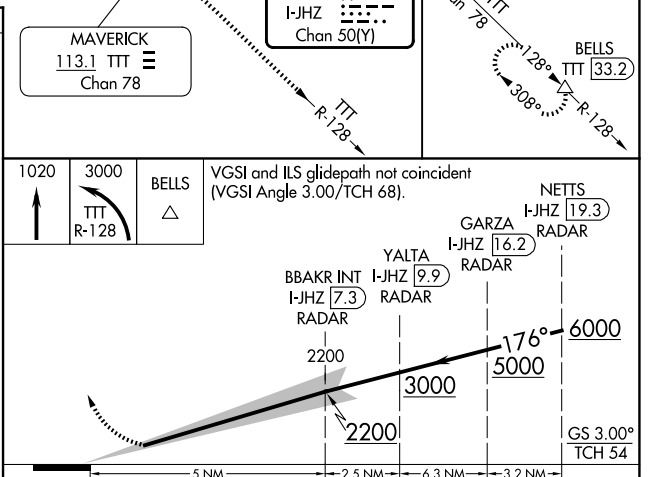
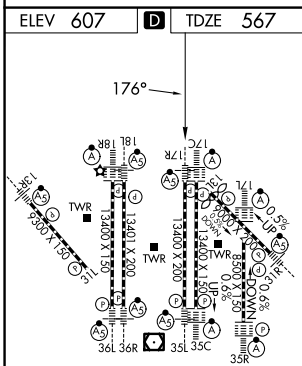
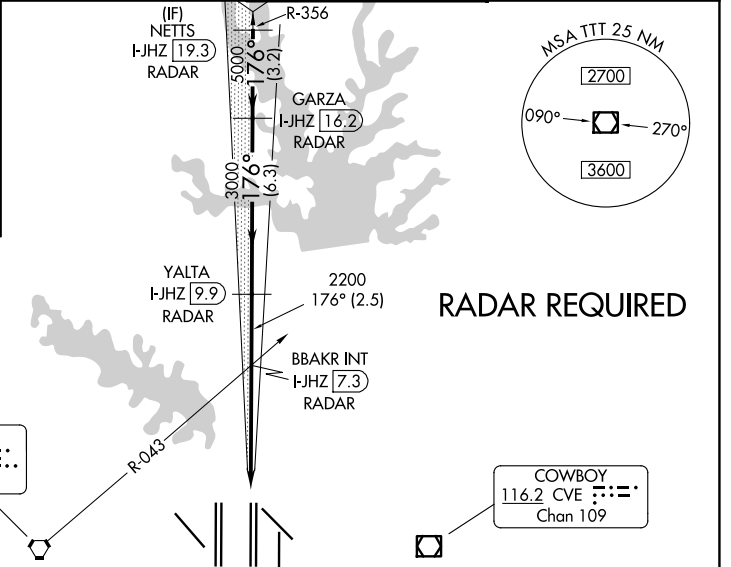
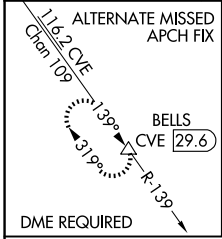


LOC/DME I-JHZ 111.35 Chan 50 (Y)	APP CRS 176°	Rwy Ldg 13400 TDZE 567 Apt Elev 607
------------------------------------------------------	------------------------	----------------------------------------------------------------

CONVERGING ILS RWY 17R

DALLAS-FORT WORTH INTL (DFW)

▼ DME or RADAR required. Simultaneous approach authorized with Converging ILS Rwy 13R.	MALSR 	MISSED APPROACH: Climb to 1020 then climbing left turn to 3000 on TTT VOR/DME R-128 to BELLS INT/TTT 33.2 DME and hold.	
D-ATIS 123.775	LONE STAR APP CON 127.075	DFW TOWER 126.55 127.5 (E) 124.15 134.9 (W)	GND CON 121.65 121.8 (E) 121.85 (W)



HIRL all Rwys
REIL Rws 13L and 31L
TDZL/RCLS all Rws except 13L and 31L

CATEGORY	A	B	C	D
S-ILS 17R	767/18		200 (200-½)	

SC-2, 16 APR 2026 to 14 MAY 2026

SC-2, 16 APR 2026 to 14 MAY 2026