

LOC/DME I-PKQ 110.3 Chan 40	APP CRS 356°	Rwy Ldg TDZE Apt Elev	13400 563 607
--	------------------------	-----------------------------	--

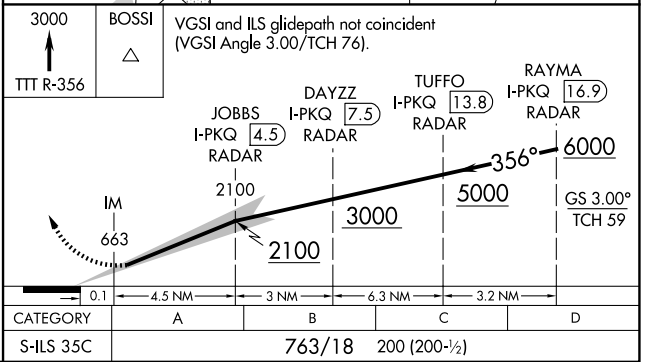
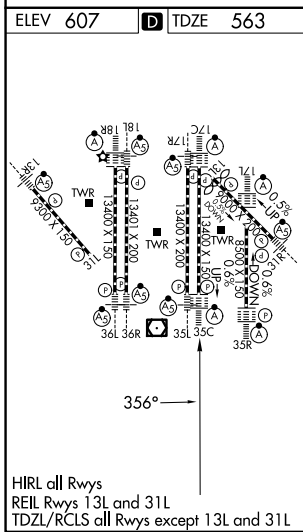
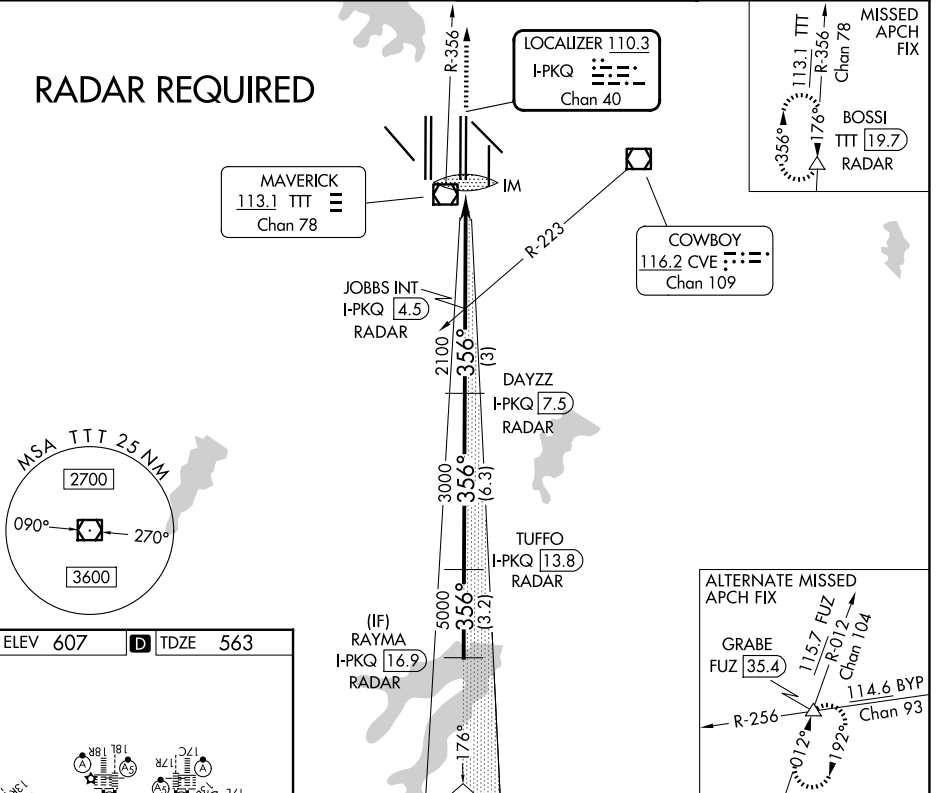
CONVERGING ILS RWY 35C

DALLAS-FORT WORTH INTL (DFW)

DME or RADAR required. Simultaneous approach authorized with Converging ILS Rwy 31R.	ALSF-2 	MISSED APPROACH: Climb to 3000 on TTT VOR/DME R-356 to BOSSI/TTT 19.7 DME/RADAR and hold.

D-ATIS 123.775	LONE STAR APP CON 127.075	DFW TOWER 126.55 127.5 (E) 124.15 134.9 (W)	GND CON 121.65 121.8 (E) 121.85 (W)
--------------------------	-------------------------------------	---	---

RADAR REQUIRED



SC-2, 16 APR 2026 to 14 MAY 2026

SC-2, 16 APR 2026 to 14 MAY 2026