

COYOTE FOUR DEPARTURE
(CYOTE4.TTT) 25JAN24

DALLAS-FORT WORTH, TEXAS
DALLAS-FORT WORTH INTL (DFW)

TOP ALTITUDE:
RWYS 13L/R, 17L/C/R, 18L/R,
31L/R, 35L/C/R, 36L/R: 2000

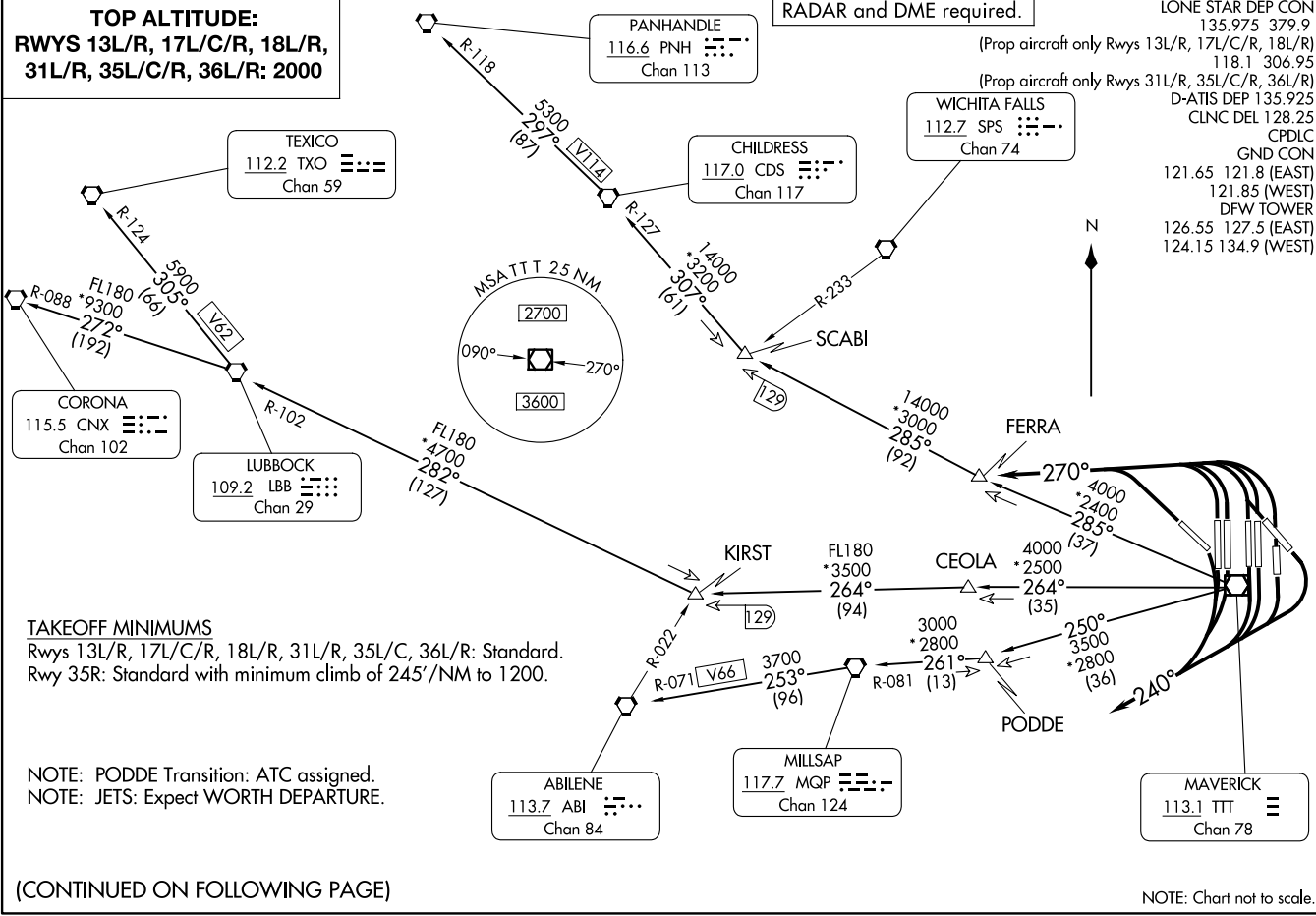
RADAR and DME required.

LONE STAR DEP CON
135.975 379.9
118.1 306.95
118.1 306.95
D-ATIS DEP 135.925
CLNC DEL 128.25
CPDIC
GND CON
121.65 121.8 (EAST)
121.85 (WEST)
DFW TOWER
126.55 127.5 (EAST)
124.15 134.9 (WEST)

(CYOTE4.TTT) 24305
COYOTE FOUR DEPARTURE

AL-6039 (FAA)

DALLAS-FORT WORTH INTL (DFW)
DALLAS-FORT WORTH, TEXAS



TAKEOFF MINIMUMS

Rwys 13L/R, 17L/C/R, 18L/R, 31L/R, 35L/C, 36L/R: Standard.
Rwy 35R: Standard with minimum climb of 245'/NM to 1200.

NOTE: PODDE Transition: ATC assigned.
NOTE: JETS: Expect WORTH DEPARTURE.

(CONTINUED ON FOLLOWING PAGE)

NOTE: Chart not to scale.

COYOTE FOUR DEPARTURE



DEPARTURE ROUTE DESCRIPTION

TAKEOFF RUNWAYS 13L/R, 17L/C/R, 18L/R: Climb on heading 240° for RADAR vectors to appropriate route, thence. . . .

TAKEOFF RUNWAYS 31L/R, 35L/C/R, 36L/R: Climb on heading 270° for RADAR vectors to appropriate route, thence. . . .

. . . .maintain 2000 and expect filed altitude 10 minutes after departure.

ABILENE TRANSITION (CYOTE4.ABI): From over TTT VOR/DME on TTT R-250 to PODDE, then on MQP R-081 to MQP VORTAC, then on MQP R-253 and ABI R-071 to ABI VORTAC.

CHILDRESS TRANSITION (CYOTE4.CDS): From over TTT VOR/DME on TTT R-285 to SCABI, then on CDS R-127 to CDS VORTAC.

CORONA TRANSITION (CYOTE4.CNX): From over TTT VOR/DME on TTT R-264 to KIRST, then on LBB R-102 to LBB VORTAC, then on LBB R-272 and CNX R-088 to CNX VORTAC.

LUBBOCK TRANSITION (CYOTE4.LBB): From over TTT VOR/DME on TTT R-264 to KIRST, then on LBB R-102 to LBB VORTAC.

MILLSAP TRANSITION (CYOTE4.MQP): From over TTT VOR/DME on TTT R-250 to PODDE, then on MQP R-081 to MQP VORTAC.

PANHANDLE TRANSITION (CYOTE4.PNH): From over TTT VOR/DME on TTT R-285 to SCABI, then on CDS R-127 to CDS VORTAC, then on CDS R-297 and PNH R-118 to PNH VORTAC.

PODDE TRANSITION (CYOTE4.PODDE): From over TTT VOR/DME on TTT R-250 to PODDE.

TEXICO TRANSITION (CYOTE4.TXO): From over TTT VOR/DME on TTT R-264 to KIRST, then on LBB R-102 to LBB VORTAC, then on LBB R-305 and TXO R-124 to TXO VORTAC.

SC-2, 16 APR 2026 to 14 MAY 2026

SC-2, 16 APR 2026 to 14 MAY 2026

COYOTE FOUR DEPARTURE