

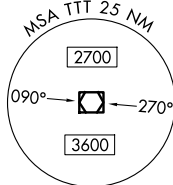
DALLAS FOUR DEPARTURE
 (DALL4:TTT) 27NOV25
 DALLAS-FORT WORTH, TEXAS
 DALLAS-FORT WORTH INTL (DFW)

LONE STAR DEP CON
 118.55 290.35
 D-ATIS DEP
 135.925
 CLNC DEL
 128.25
 CPDLC
 GND CON
 121.65 121.8 (EAST)
 121.85 (WEST)
 DFW TOWER
 126.55 127.5 (EAST)
 124.15 134.9 (WEST)

RADAR and DME required.

TAKEOFF MINIMUMS
 Rwys 13L/R, 17L/C/R, 18L/R,
 31L/R, 35L/C, 36L/R: Standard.
 Rwy 35R: Standard with minimum
 climb of 245' /NM to 1200.

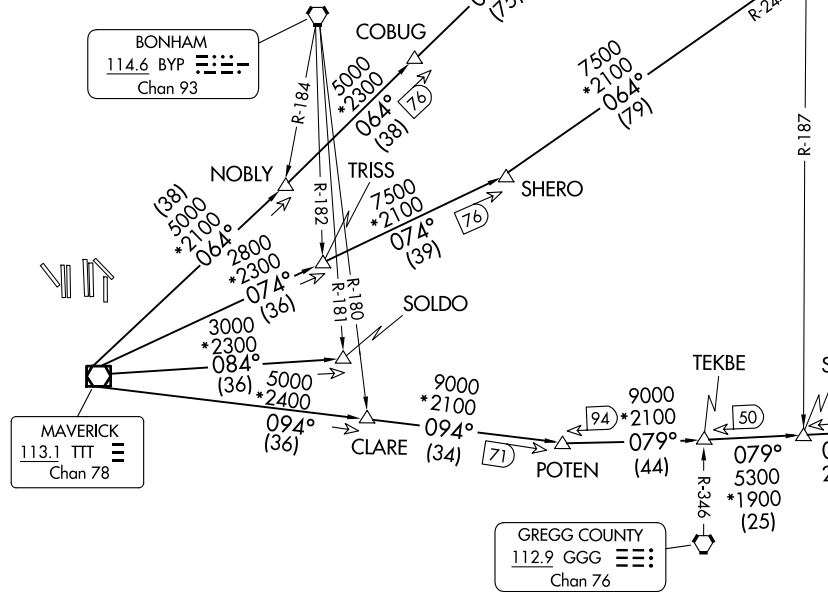
LITTLE ROCK
 115.1 LIT
 Chan 98



TEXARKANA
 116.3 TXK
 Chan 110

TOP ALTITUDE:
 RWYS 13L/R, 17L/C/R, 18L/R,
 35L/C/R, 36L/R: 10000
 RWYS 31L/R: 5000

NOTE: BELCHER Transition: For aircraft inbound to the JAN, MLU, and SHV terminal areas only.
 NOTE: SOLD0 Transition: ATC assigned.
 NOTE: For all aircraft requesting FL230 and below expect GARLAND departure.
 NOTE: For all aircraft requesting FL240 and above.
 NOTE: Dallas-Fort Worth Intl Departures: Jets maintain 240K until leaving 5000.



(CONTINUED ON FOLLOWING PAGE)

NOTE: Chart not to scale.

(DALL4:TTT) 25331
 DALLAS FOUR DEPARTURE
 AL-6039 (FAA)
 DALLAS-FORT WORTH INTL (DFW)
 DALLAS-FORT WORTH, TEXAS

DALLAS FOUR DEPARTURE



DEPARTURE ROUTE DESCRIPTION

TAKEOFF RUNWAYS 31L/R: Climb on assigned heading, maintain 5000, thence. . . .

TAKEOFF RUNWAYS 13L/R, 17L/C/R, 18L/R, 35L/C/R, 36L/R: Climb on assigned heading, maintain 10000, thence. . . .

. . . .for RADAR vectors to appropriate route and expect filed altitude 10 minutes after departure.

BELCHER TRANSITION (DALL4.EIC): From over TTT VOR/DME on TTT R-094 to POTEN, then on EIC R-259 to EIC VORTAC.

LITTLE ROCK TRANSITION (DALL4.LIT): From over TTT VOR/DME on TTT R-064 to ORTRO, then on LIT R-237 to LIT VORTAC.

SOLDO TRANSITION (DALL4.SOLDO): From over TTT VOR/DME on TTT R-084 to SOLDO.

TEXARKANA TRANSITION (DALL4.TXK): From over TTT VOR/DME on TTT R-074 to SHERO, then on TXK R-244 to TXK VORTAC.

SC-2, 16 APR 2026 to 14 MAY 2026

SC-2, 16 APR 2026 to 14 MAY 2026