

FORCK THREE DEPARTURE (RNAV)  
(FORCK3.FORCK) 08SEF22

DALLAS-FORT WORTH, TEXAS  
DALLAS-FORT WORTH INTL (DFW)

**TOP ALTITUDE:**  
**RWYS 31L/R: 5000**  
**RWYS 17C/R, 18L/R,**  
**35L/C, 36L/R: 10000**

RNAV 1 - DME/DME/IRU or GPS.  
RADAR required.

**TAKEOFF MINIMUMS**  
Rwys 31L/R: Standard.  
Rwys 17C/R, 18L/R, 35L/C, 36L/R:  
Standard with minimum climb of 500' per  
NM to 1120.

LONE STAR DEP CON 118.55 290.35  
D-ATIS DEP 135.925  
CLNC DEL 128.25  
CPDLC 128.25  
GND CON 121.65 121.8 (EAST)  
121.85 (WEST)  
DFW TOWER 126.55 127.5 (EAST)  
124.15 134.9 (WEST)

ZACHH ✧

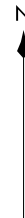
TRYTN ✧

SWDIA ✧

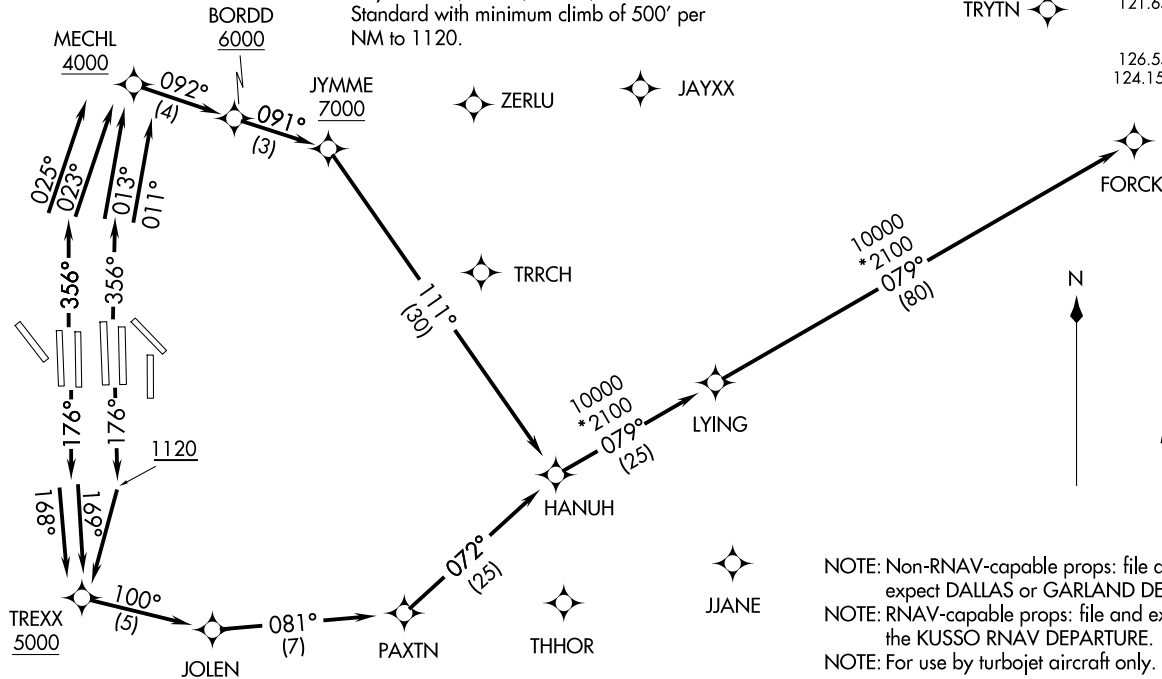
ZERLU ✧

JAYXX ✧

FORCK ✧



MRSSH ✧



NOTE: Non-RNAV-capable props: file and expect DALLAS or GARLAND DEPARTURE.  
NOTE: RNAV-capable props: file and expect the KUSSO RNAV DEPARTURE.  
NOTE: For use by turbojet aircraft only.

NOTE: Chart not to scale.

(CONTINUED ON FOLLOWING PAGE)

(FORCK3.FORCK) 24305  
FORCK THREE DEPARTURE (RNAV)

AL-6039 (FAA)

DALLAS-FORT WORTH INTL (DFW)  
DALLAS-FORT WORTH, TEXAS



DEPARTURE ROUTE DESCRIPTION

TAKEOFF RUNWAYS 17C/R: Climb on heading 176° to 1120, then direct to cross TREXX at or above 5000, then on track 100° to JOLEN, then on track 081° to PAXTN, then on track 072° to HANUH, thence. . . .

TAKEOFF RUNWAY 18L: Climb on heading 176° to intercept course 169° to cross TREXX at or above 5000, then on track 100° to JOLEN, then on track 081° to PAXTN, then on track 072° to HANUH, thence. . . .

TAKEOFF RUNWAY 18R: Climb on heading 176° to intercept course 168° to cross TREXX at or above 5000, then on track 100° to JOLEN, then on track 081° to PAXTN, then on track 072° to HANUH, thence. . . .

TAKEOFF RUNWAY 35C: Climb on heading 356° to intercept course 011° to cross MECHL at or above 4000, then on track 092° to cross BORDD at or above 6000, then on track 091° to cross JYMME at or above 7000, then on track 111° to HANUH, thence. . . .

TAKEOFF RUNWAY 35L: Climb on heading 356° to intercept course 013° to cross MECHL at or above 4000, then on track 092° to cross BORDD at or above 6000, then on track 091° to cross JYMME at or above 7000, then on track 111° to HANUH, thence. . . .

TAKEOFF RUNWAY 36L: Climb on heading 356° to intercept course 025° to cross MECHL at or above 4000, then on track 092° to cross BORDD at or above 6000, then on track 091° to cross JYMME at or above 7000, then on track 111° to HANUH, thence. . . .

TAKEOFF RUNWAY 36R: Climb on heading 356° to intercept course 023° to cross MECHL at or above 4000, then on track 092° to cross BORDD at or above 6000, then on track 091° to cross JYMME at or above 7000, then on track 111° to HANUH, thence. . . .

. . . .on track 079° to LYING, then on track 079° to FORCK. Maintain 10000, expect filed altitude ten minutes after departure.

TAKEOFF RUNWAY 31L/R: Climb on heading assigned by ATC for RADAR vectors to HANUH, thence. . . .

. . . .on track 079° to LYING, then on track 079° to FORCK. Maintain 5000, expect filed altitude ten minutes after departure.

SC-2, 16 APR 2026 to 14 MAY 2026

SC-2, 16 APR 2026 to 14 MAY 2026