

GARLAND SIX DEPARTURE
 (GARL6.TT) 17APR25
 DALLAS-FORT WORTH INTL (DFW)
 DALLAS-FORT WORTH, TEXAS

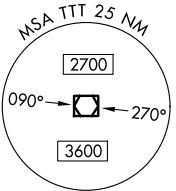
LONE STAR DEP CON
 118.55 290.35
 D-ATIS DEP
 135.925
 CLNC DEL
 128.25
 CPDLC
 GND CON
 121.65 121.8 (EAST)
 121.85 (WEST)
 DFW TOWER
 126.55 127.5 (EAST)
 124.15 134.9 (WEST)

TOP ALTITUDE:
RWYS 13L/R, 17L/C/R, 18L/R,
35L/C/R, 36L/R: 10000
RWYS 31L/R: 5000

RADAR and DME required.

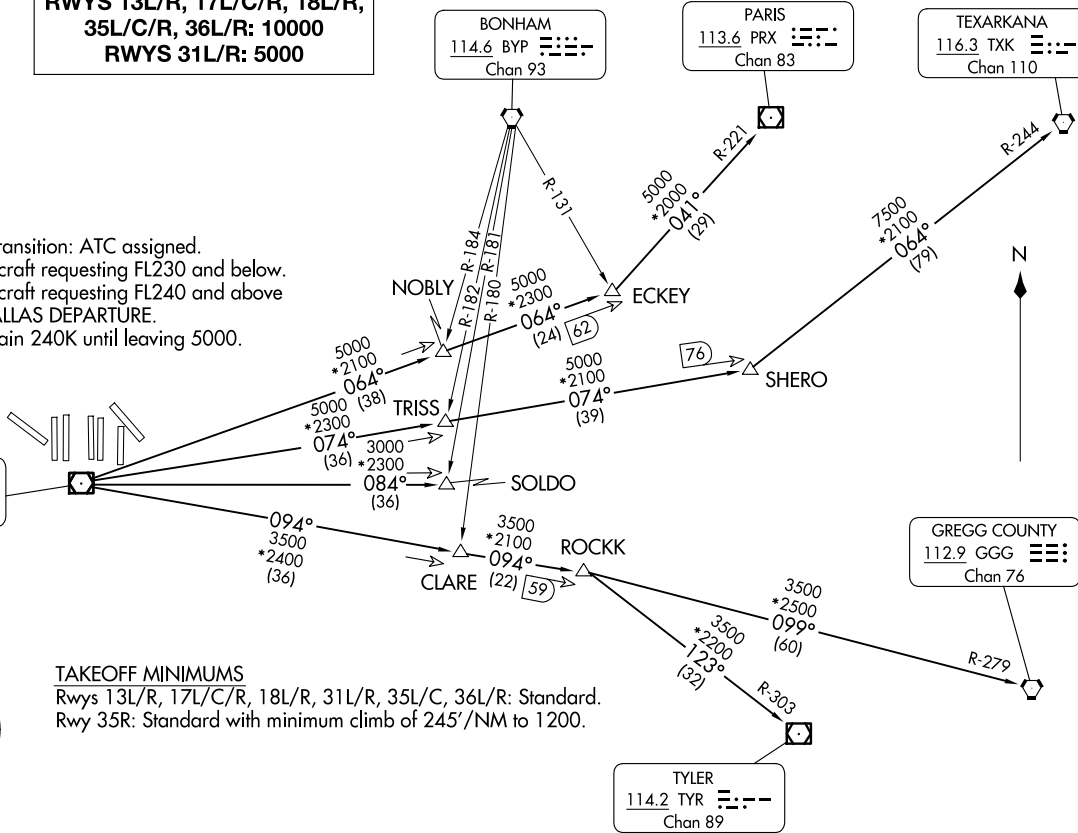
NOTE: SOLDO Transition: ATC assigned.
 NOTE: For all aircraft requesting FL230 and below.
 NOTE: For all aircraft requesting FL240 and above
 expect DALLAS DEPARTURE.
 NOTE: Jets maintain 240K until leaving 5000.

MAVERICK
113.1 TTT
 Chan 78



TAKEOFF MINIMUMS
 Rwys 13L/R, 17L/C/R, 18L/R, 31L/R, 35L/C, 36L/R: Standard.
 Rwy 35R: Standard with minimum climb of 245'/NM to 1200.

NOTE: Chart not to scale.



(CONTINUED ON FOLLOWING PAGE)

GARLAND SIX DEPARTURE
 (GARL6.TT) 25107
 AL-6039 (FAA)
 DALLAS-FORT WORTH INTL (DFW)
 DALLAS-FORT WORTH, TEXAS

GARLAND SIX DEPARTURE



DEPARTURE ROUTE DESCRIPTION

TAKEOFF RUNWAYS 31L/R: Climb on assigned heading, maintain 5000, thence. . .

TAKEOFF RUNWAYS 13L/R, 17L/C/R, 18L/R, 35L/C/R, 36L/R: Climb on assigned heading, maintain 10000, thence. . .

. . .for RADAR vectors to appropriate route and expect filed altitude 10 minutes after departure.

GREGG COUNTY TRANSITION (GARL6.GGG): From over TTT VOR/DME on TTT R-094 to ROCKK, then on GGG R-279 to GGG VORTAC.

PARIS TRANSITION (GARL6.PRX): From over TTT VOR/DME on TTT R-064 to ECKEY, then on PRX R-221 to PRX VOR/DME.

SOLDO TRANSITION (GARL6.SOLDO): From over TTT VOR/DME on TTT R-084 to SOLDO.

TEXARKANA TRANSITION (GARL6.TXK): From over TTT VOR/DME on TTT R-074 to SHERO, then on TXK R-244 to TXK VORTAC.

TYLER TRANSITION (GARL6.TYR): From over TTT VOR/DME on TTT R-094 to ROCKK, then on TYR R-303 to TYR VOR/DME.

SC-2, 16 APR 2026 to 14 MAY 2026

SC-2, 16 APR 2026 to 14 MAY 2026