

HRPER THREE DEPARTURE (RNAV)
(HRPER3, HRPER) 04FEB16

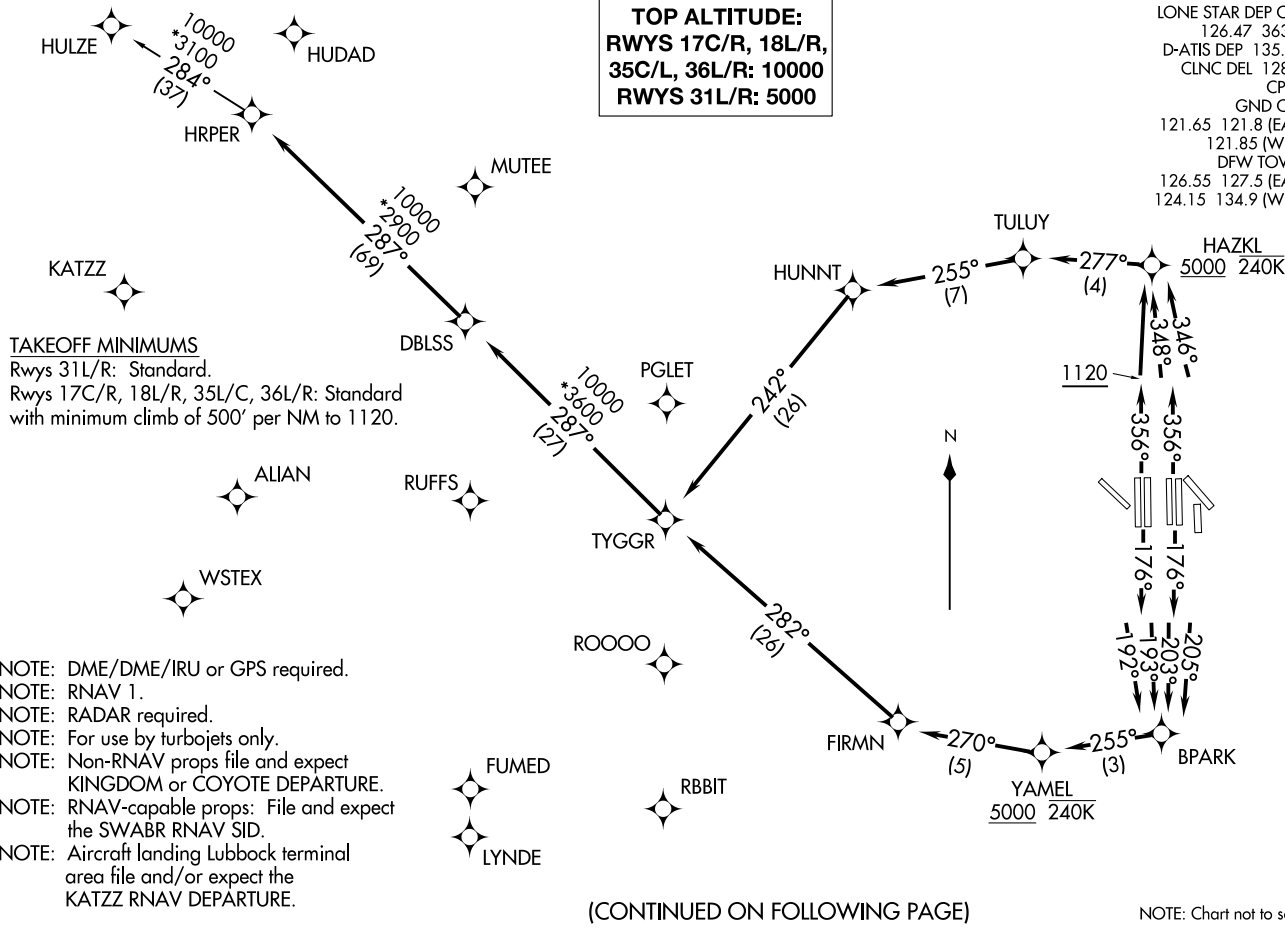
DALLAS-FORT WORTH, TEXAS
DALLAS-FORT WORTH INTL (DFW)

(HRPER3, HRPER) 24305
HRPER THREE DEPARTURE (RNAV)

AL-6039 (FAA)
DALLAS-FORT WORTH INTL (DFW)
DALLAS-FORT WORTH, TEXAS

TOP ALTITUDE:
RWYS 17C/R, 18L/R,
35C/L, 36L/R: 10000
RWYS 31L/R: 5000

LONE STAR DEP CON
126.47 363.15
D-ATIS DEP 135.925
CLNC DEL 128.25
CPDLC
GND CON
121.65 121.8 (EAST)
121.85 (WEST)
DFW TOWER
126.55 127.5 (EAST)
124.15 134.9 (WEST)



(CONTINUED ON FOLLOWING PAGE)

NOTE: Chart not to scale.



DEPARTURE ROUTE DESCRIPTION

TAKEOFF RUNWAY 17C: Climb heading 176° to intercept course 205° to BPARK, then on track 255° to cross YAMEL at or above 5000, then on track 270° to FIRMN, then on track 282° to TYGGR, thence

TAKEOFF RUNWAY 17R: Climb heading 176° to intercept course 203° to BPARK, then on track 255° to cross YAMEL at or above 5000, then on track 270° to FIRMN, then on track 282° to TYGGR, thence

TAKEOFF RUNWAY 18L: Climb heading 176° to intercept course 193° to BPARK, then on track 255° to cross YAMEL at or above 5000, then on track 270° to FIRMN, then on track 282° to TYGGR, thence

TAKEOFF RUNWAY 18R: Climb heading 176° to intercept course 192° to BPARK, then on track 255° to cross YAMEL at or above 5000, then on track 270° to FIRMN, then on track 282° to TYGGR, thence

TAKEOFF RUNWAY 35C: Climb heading 356° to intercept course 346° to cross HAZKL at or above 5000, then on track 277° to TULUY, then on track 255° to HUNNT, then on track 242° to TYGGR, thence

TAKEOFF RUNWAY 35L: Climb heading 356° to intercept course 348° to cross HAZKL at or above 5000, then on track 277° to TULUY, then on track 255° to HUNNT, then on track 242° to TYGGR, thence

TAKEOFF RUNWAYS 36L/R: Climb heading 356° to 1120, then direct to cross HAZKL at or above 5000, then on track 277° to TULUY, then on track 255° to HUNNT, then on track 242° to TYGGR, thence

. . . . on track 287° to DBLSS, then on track 287° to HRPER, then on (transition).
Maintain 10000, expect filed altitude ten minutes after departure.

TAKEOFF RUNWAYS 31L/R: Climb heading assigned by ATC, expect RADAR vectors to TYGGR, thence

. . . . on track 287° to DBLSS, then on track 287° to HRPER, then on (transition).
Maintain 5000, expect filed altitude ten minutes after departure.

HULZE TRANSITION (HRPER3.HULZE)

SC-2, 16 APR 2026 to 14 MAY 2026

SC-2, 16 APR 2026 to 14 MAY 2026