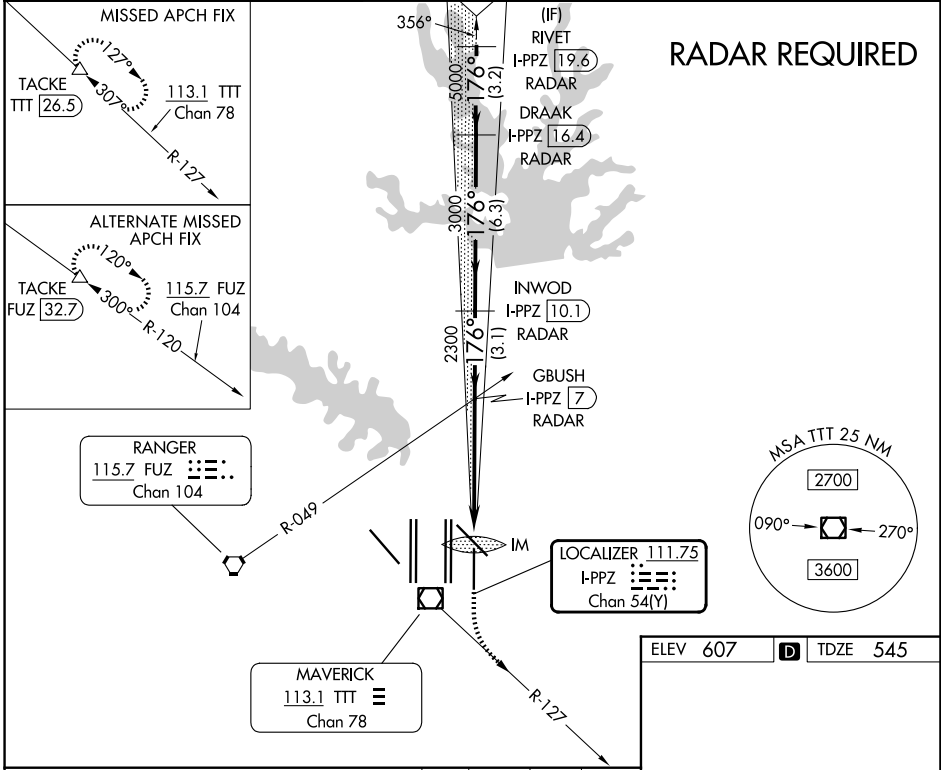


| | | |
|--|------------------------|---|
| LOC/DME I-PPZ 111.75 Chan 54 (Y) | APP CRS 176° | Rwy Ldg TDZE 545 Apt Elev 607 |
|--|------------------------|---|

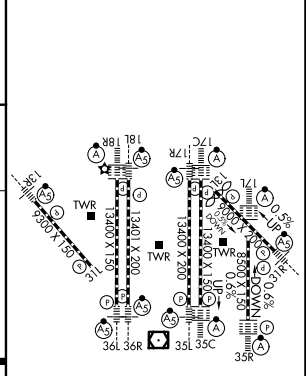
ILS RWY 17L (SA CAT I)

DALLAS-FORT WORTH INTL (DFW)

| | | | |
|--|---|---|---|
| <p>Simultaneous approach authorized with Rwy 17C/R and Rwy 18L/R. DME required. Requires specific OPSPEC, MSPEC, or LOA approval and use of HUD to DA.</p> | <p>ALSF-2</p> | <p>MISSED APPROACH: Climb to 1020 then climbing left turn to 3000 on heading 151° and TTT VOR/DME R-127 to TACKE/TTT 26.5 DME and hold.</p> | |
| <p>D-ATIS 123.775</p> | <p>LONE STAR APP CON 119.4</p> | <p>DFW TOWER 126.55 127.5 (E) 124.15 134.9 (W)</p> | <p>GND CON 121.65 121.8 (E) 121.85 (W)</p> |



| | |
|----------|----------|
| ELEV 607 | TDZE 545 |
|----------|----------|



| | | | | |
|--|----------------------|---|---|---|
| CATEGORY | A | B | C | D |
| S-ILS 17L | RA 165/14 150 DA 695 | | | |
| SA CATEGORY I ILS - SPECIAL AIRCREW & AIRCRAFT CERTIFICATION REQUIRED | | | | |

HIRL all Rwys
REIL Rwy 13L and 31L
TDZL/RCLS all Rwy except 13L and 31L