

LOC/DME I-AJQ <b>111.75</b> Chan 54(Y)	APP CRS <b>356°</b>	Rwy Ldg TDZE Apt Elev <b>8500</b> <b>575</b> <b>607</b>
--	------------------------	--

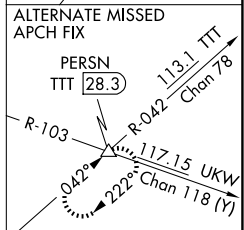
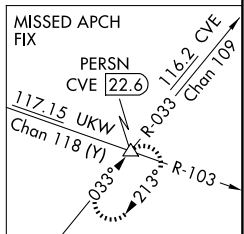
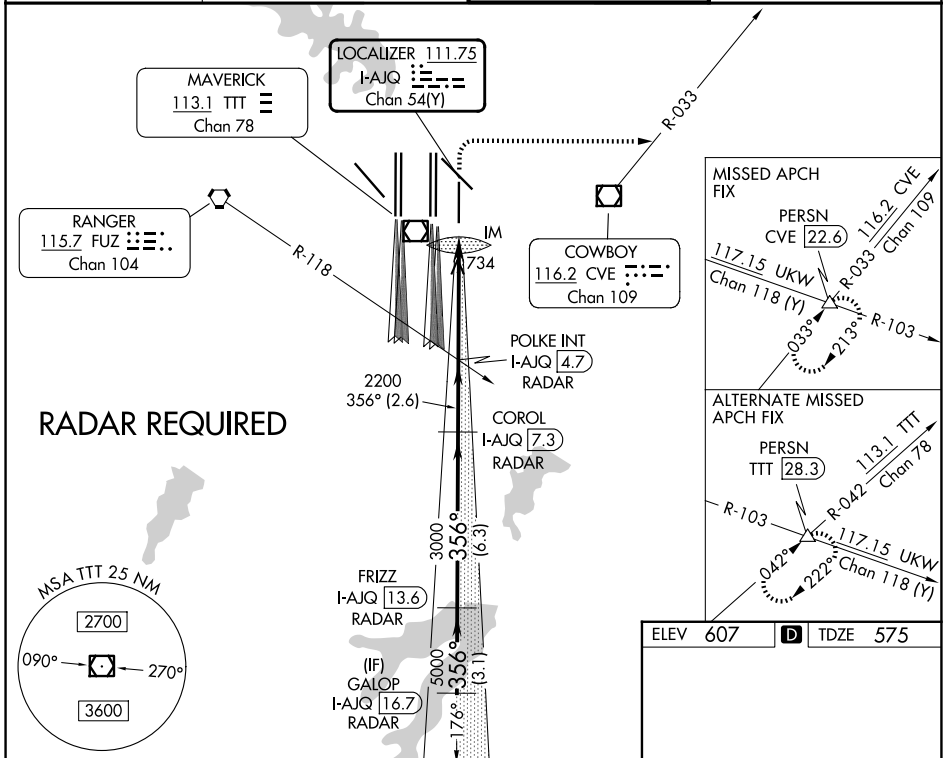
# ILS RWY 35R (SA CAT I)

DALLAS-FORT WORTH INTL (DFW)

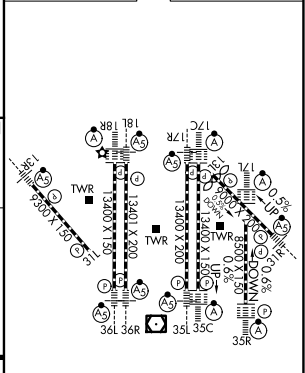
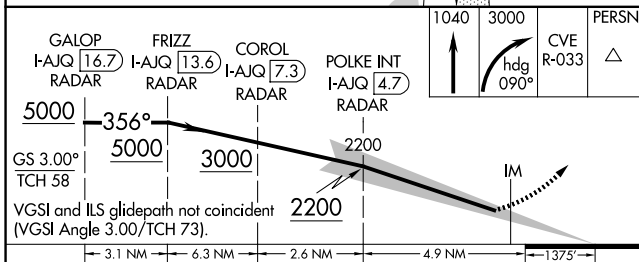
Simultaneous approach authorized with Rwy 36L/R and Rwy 35L/C. DME required. Requires specific OPSPEC, MSPEC, or LOA approval and use of HUD to DH.

ALSF-2  
MISSED APPROACH: Climb to 1040 then climbing right turn to 3000 on heading 090° and CVE VOR/DME R-033 to PERSN/CVE 22.6 DME and hold.

D-ATIS <b>123.775</b>	LONE STAR APP CON <b>119.4</b>	DFW TOWER <b>126.55 127.5 (E)</b> <b>124.15 134.9 (W)</b>	GND CON <b>121.65 121.8 (E)</b> <b>121.85 (W)</b>
--------------------------	-----------------------------------	---	---



ELEV 607	D	TDZE 575
----------	---	----------



CATEGORY	A	B	C	D
S-ILS 35R	RA 144/14 150 DA 725			

## SA CATEGORY I ILS - SPECIAL AIRCREW & AIRCRAFT CERTIFICATION REQUIRED

SC-2, 16 APR 2026 to 14 MAY 2026

SC-2, 16 APR 2026 to 14 MAY 2026