

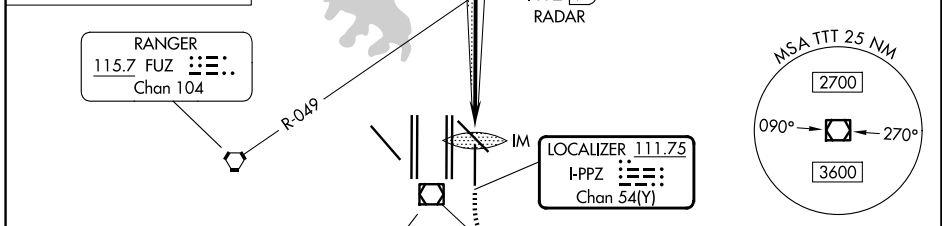
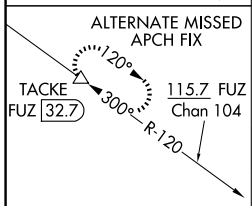
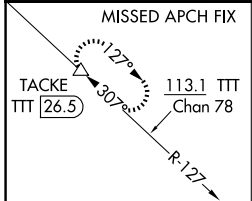
LOC/DME I-PPZ 111.75 Chan 54 (Y)	APP CRS 176°	Rwy Ldg 8500 TDZE 545 Apt Elev 607
--	------------------------	---

ILS or LOC RWY 17L

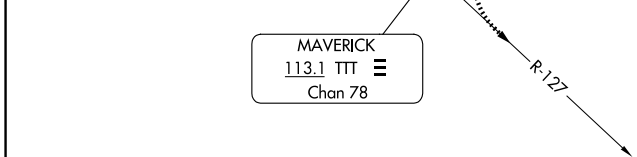
DALLAS-FORT WORTH INTL (DFW)

▼ Simultaneous approach authorized with Rwy 17C/R and Rwy 18L/R. DME required.
 ALSF-2
MISSED APPROACH: Climb to 1020 then climbing left turn to 3000 on heading 151° and TTT VOR/DME R-127 to TACKE/TTT 26.5 DME and hold.

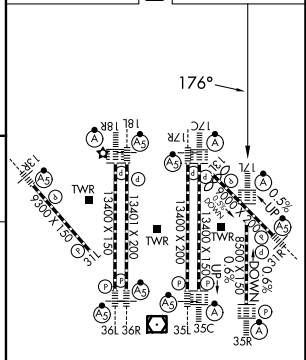
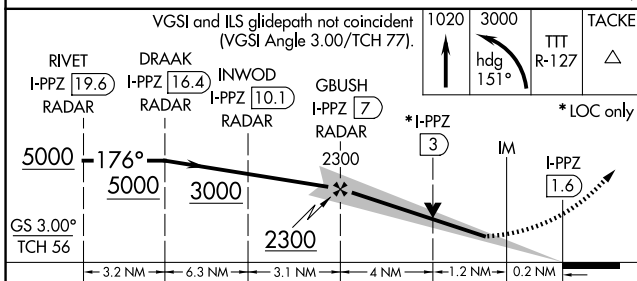
D-ATIS 123.775	LONE STAR APP CON 119.4	DFW TOWER 126.55 127.5 (E) 124.15 134.9 (W)	GND CON 121.65 121.8 (E) 121.85 (W)
--------------------------	-----------------------------------	---	---



RADAR REQUIRED



ELEV 607	D	TDZE 545
----------	----------	----------



CATEGORY	A	B	C	D
S-ILS 17L	745/18 200 (200-½)			
S-LOC 17L	1040/24	495 (500-½)	1040/50	495 (500-1)

FAF to MAP 5.4 NM					
Knots	60	90	120	150	180
Min:Sec	5:24	3:36	2:42	2:10	1:48

SC-2, 16 APR 2026 to 14 MAY 2026

SC-2, 16 APR 2026 to 14 MAY 2026