

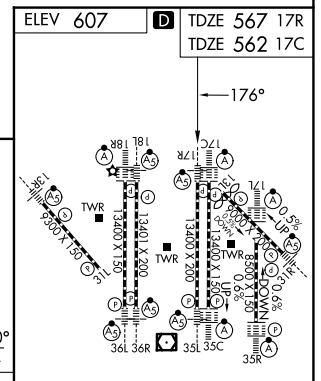
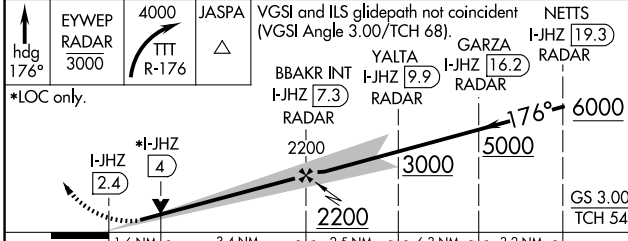
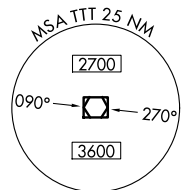
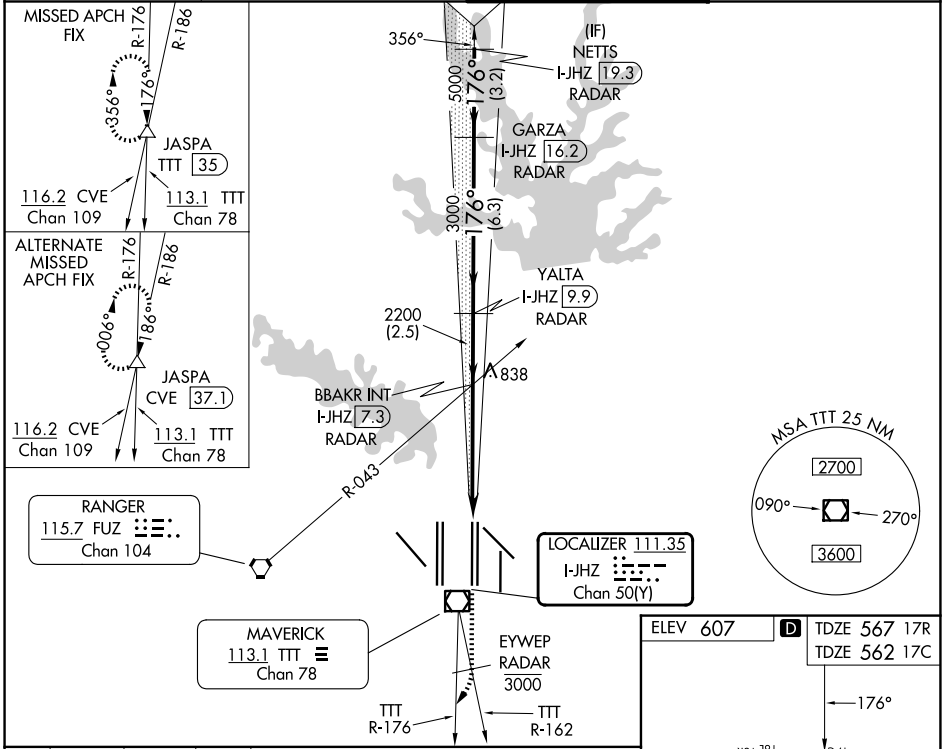
LOC/DME I-JHZ 111.35 Chan 50(Y)	APP CRS 176°	Rwy Ldg 17R 13400 17C 13400 TDZE 567 562 Apt Elev 607 607
--	------------------------	--

ILS or LOC RWY 17R

DALLAS-FORT WORTH INTL (DFW)

DME and RADAR required.	Rwy 17R MALSR	Rwy 17C ALSF-2	MISSED APPROACH: Climb on heading 176° to cross EYWEP/RADAR at or below 3000, then climbing right turn to 4000 on TTT VOR/DME R-176 to JASPA/TTT 35 DME and hold.
Simultaneous approach authorized with Rwy 17L, 18L/R.			

D-ATIS 123.775	LONE STAR APP CON 127.075	DFW TOWER 126.55 127.5 (E) 124.15 134.9 (W)	GND CON 121.65 121.8 (E) 121.85 (W)
--------------------------	-------------------------------------	---	--



CATEGORY	A	B	C	D
S-ILS 17R	767/18 200 (200-1/2)			
S-LOC 17R	1140/24	573 (600-1/2)	1140-1 1/4	573 (600-1 1/4)
SIDESTEP 17C	1140-1	578 (600-1)	1140-1 1/2	1140-2 578 (600-2)

HIRL all Rwys
REIL Rwy 13L and 31L
TDZL/RCLS all Rwy except 13L and 31L

SC-2, 16 APR 2026 to 14 MAY 2026

SC-2, 16 APR 2026 to 14 MAY 2026