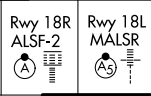


LOC/DME I-VYIN 111.9 Chan 56	APP CRS 176°	Rwy Ldg 18R 13400 18L 13401 TDZE 607 602 Apt Elev 607 607
--	------------------------	---

ILS or LOC RWY 18R

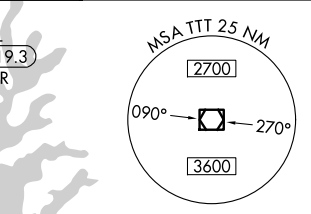
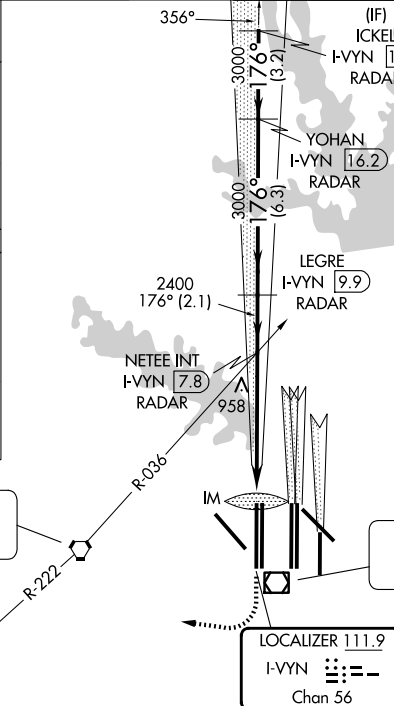
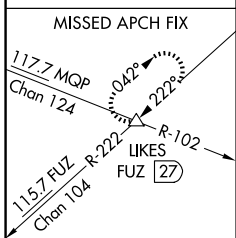
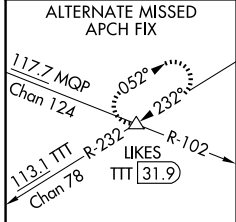
DALLAS-FORT WORTH INTL (DFW)

⚠ Inop table does not apply to Sidestep 18L Cats A and B. DME or RADAR required. Simultaneous approach authorized with Rwy 17 L/C/R. For inop ALSF/MALSRS, increase S-LOC 18R Cat C/D and Sidestep 18L Cat C visibility to 1/4 mile.

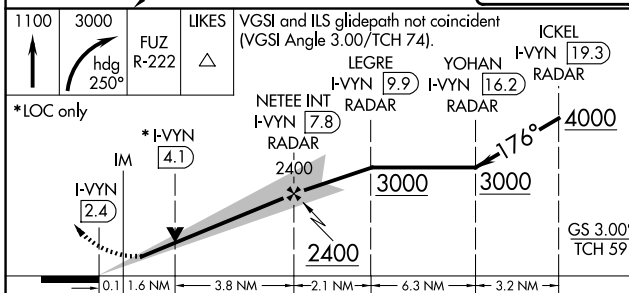
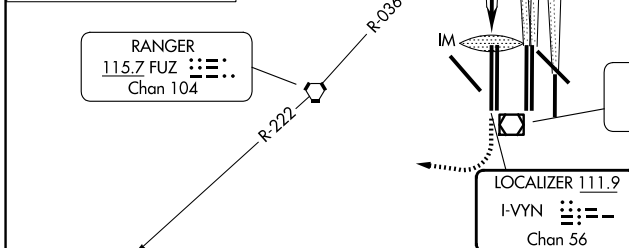


MISSED APPROACH: Climb to 1100 then climbing right turn to 3000 on heading 250° and FUZ VORTAC R-222 to LIKES INT/FUZ VORTAC 27 DME and hold.

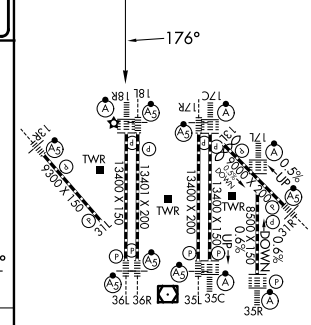
D-ATIS 123.775	LONE STAR APP CON 118.425	DFW TOWER 126.55 127.5 (E) 124.15 134.9 (W)	GND CON 121.65 121.8 (E) 121.85 (W)
--------------------------	-------------------------------------	---	---



RADAR REQUIRED



ELEV 607	D TDZE 18R 607
	TDZE 18L 602



CATEGORY	A	B	C	D
S-ILS 18R	807/18		200 (200-1/2)	
S-LOC 18R	1220/24	613 (700-1/2)	1220-1 3/8	613 (700-1 3/8)
SIDESTEP 18L	1220/50	618 (700-1)	1220-1 3/8	1220-1 1/2
			618 (700-1 3/8)	618 (700-1 1/2)

HIRL all Rwys				
REIL Rwys 13L and 31L				
TDZL/RCLS all Rwys except 13L and 31L				
FAF to MAP 5.5 NM				
Knots	60	90	120	150
Min:Sec	5:30	3:40	2:45	2:12
				1:50

SC-2, 16 APR 2026 to 14 MAY 2026

SC-2, 16 APR 2026 to 14 MAY 2026