

LOC/DME I-PKQ 110.3 Chan 40	APP CRS 356°	Rwy Ldg 35C 35L TDZE 13400 13400 563 564 Apt Elev 607 607
--	------------------------	---

ILS or LOC RWY 35C

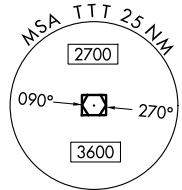
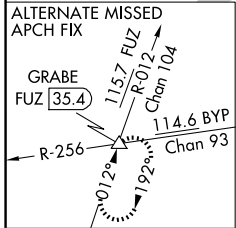
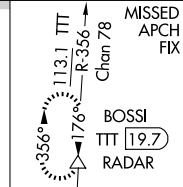
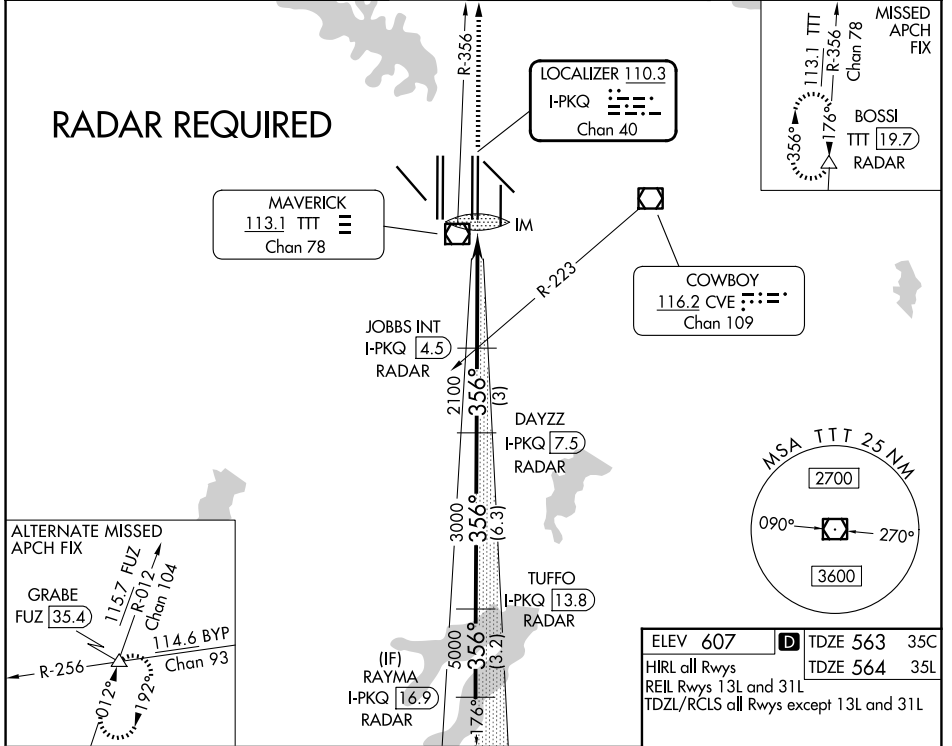
DALLAS-FORT WORTH INTL (DFW)

▼ Inoperative table does not apply to Sidestep Rwy 35L Cats A and B. DME or RADAR required. Simultaneous approach authorized with Rwy 35R, Rwy 36L/R.

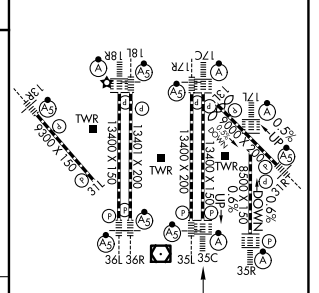
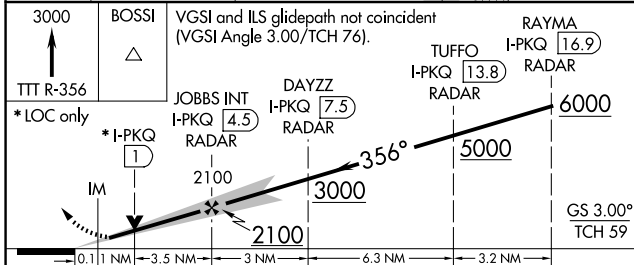


MISSED APPROACH: Climb to 3000 on TTT VOR/DME R-356 to BOSSI/TTT 19.7 DME/RADAR and hold.

D-ATIS 123.775	LONE STAR APP CON 127.075	DFW TOWER 126.55 127.5 (E) 124.15 134.9 (W)	GND CON 121.65 121.8 (E) 121.85 (W)
--------------------------	-------------------------------------	---	---



ELEV 607	D TDZE 563 35C
HIRL all Rwys	TDZE 564 35L
REL Rwys 13L and 31L	
TDZL/RCLS all Rwys except 13L and 31L	



CATEGORY	A	B	C	D
S-ILS 35C	763/18		200 (200-½)	
S-LOC 35C	1000/24	437 (400-½)	1000/40	437 (400-¾)
SIDESTEP 35L	1000/55		436 (400-1)	
			1000-1½	436 (400-1½)

FAF to MAP 4.6 NM					
Knots	60	90	120	150	180
Min:Sec	4:36	3:04	2:18	1:50	1:32

SC-2, 16 APR 2026 to 14 MAY 2026

SC-2, 16 APR 2026 to 14 MAY 2026