

LOC/DME I-UWX <b>111.35</b> Chan <b>50 (Y)</b>	APP CRS <b>356°</b>	Rwy Ldg <b>35L 35C</b>	<b>13400 13400</b>
		TDZE <b>564 563</b>	
		Apt Elev <b>607 607</b>	

# ILS or LOC RWY 35L

DALLAS-FORT WORTH INTL (DFW)

▼ DME or RADAR required. Simultaneous approach authorized with Rwy 36 L/R and Rwy 35R.  
Inop table does not apply to Sidestep Rwy 35C.



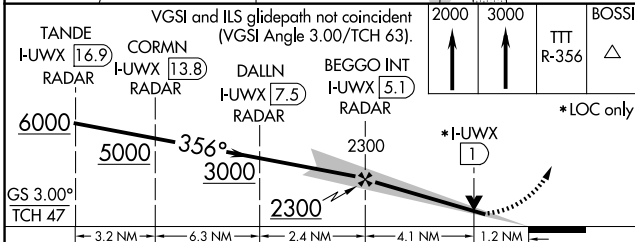
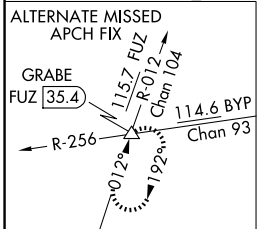
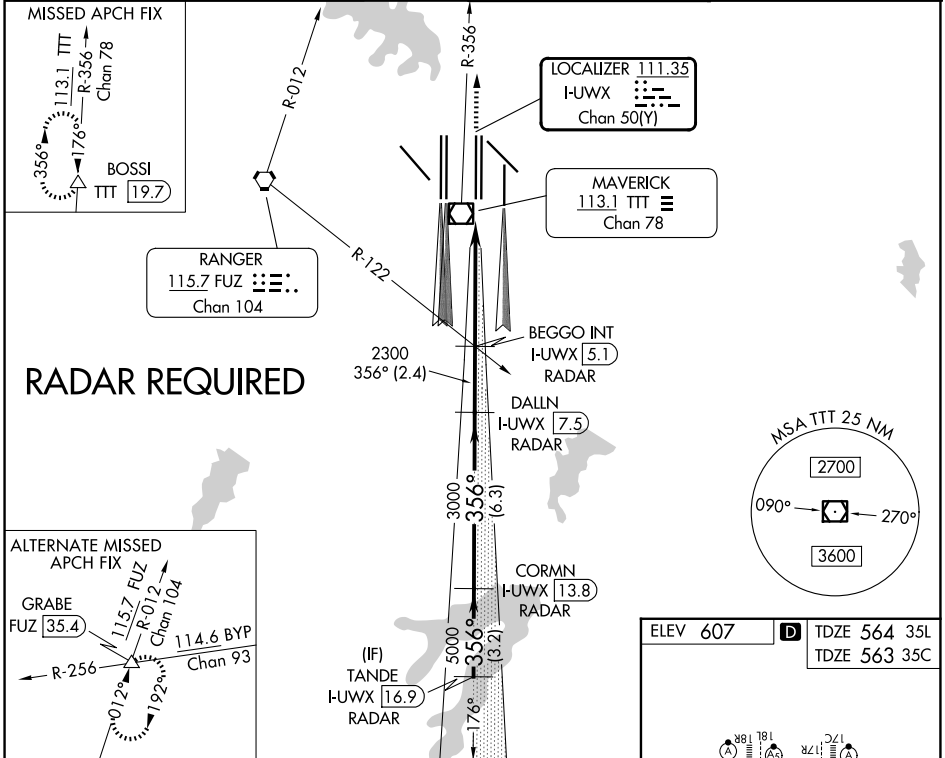
MISSED APPROACH: Climb to 2000 then climb to 3000 on TTT VOR/DME R-356 to BOSSI/TTT 19.7 DME and hold.

D-ATIS  
**123.775**

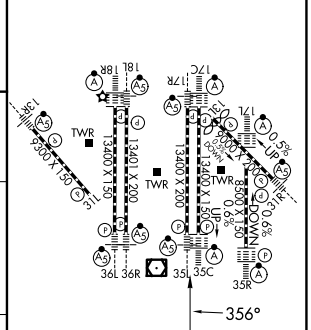
LONE STAR APP CON  
**127.075**

DFW TOWER  
**126.55 127.5 (E)**  
**124.15 134.9 (W)**

GND CON  
**121.65 121.8 (E)**  
**121.85 (W)**



ELEV 607	<b>D</b> TDZE 564 35L
	TDZE 563 35C



CATEGORY	A	B	C	D
S-ILS 35L	764/18 200 (200-1/2)			
S-LOC 35L	1000/24	436 (400-1/2)	1000/40	436 (400-3/4)
SIDESTEP 35C	1000-1	437 (400-1)	1000-1 1/2	1000-2
			437 (400-1/2)	437 (400-2)