

LOC/DME I-BXN <b>111.9</b> Chan <b>56</b>	APP CRS <b>356°</b>	Rwy Ldg <b>36L 36R</b> <b>13400 13401</b> TDZE <b>588 581</b> Apt Elev <b>606 606</b>
---	------------------------	---

# ILS or LOC RWY 36L

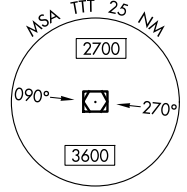
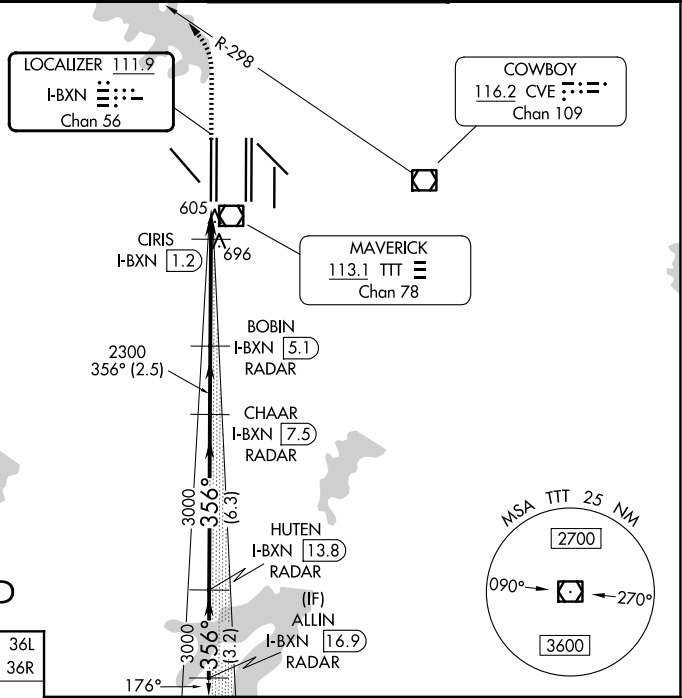
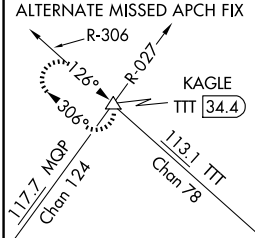
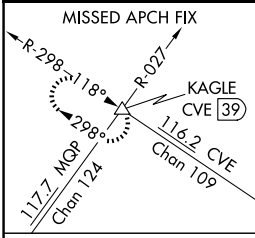
DALLAS-FORT WORTH INTL (DFW)

▼ Inop table does not apply to Sidestep 36R. Simultaneous approach authorized with Rwy 35L/C/R. DME or RADAR required. For inop ALS, increase S-LOC 36L Cat C and D visibility to 1 $\frac{1}{2}$  SM. For inop ALS, increase CIRIS fix minimums (DME required) S-LOC 36L Cats C and D visibility to RVR 5500.



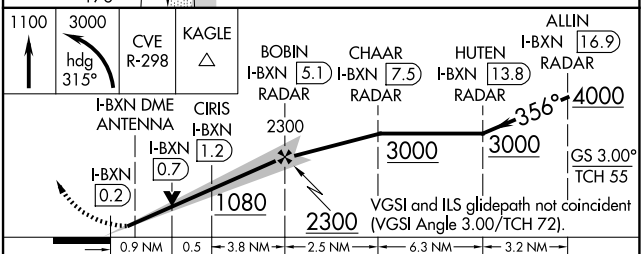
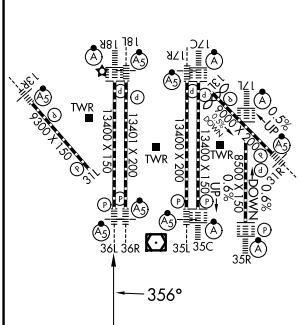
MISSED APPROACH: Climb to 1100 then climbing left turn to 3000 on heading 315° and CVE VOR/DME R-298 to KAGLE INT/ CVE VOR/DME 39 DME and HGLD.

D-ATIS <b>123.775</b>	LONE STAR APP CON <b>118.425</b>	DFW TOWER <b>126.55 127.5 (E)</b> <b>124.15 134.9 (W)</b>	GND CON <b>121.65 121.8 (E)</b> <b>121.85 (W)</b>
--------------------------	-------------------------------------	---	---



## RADAR REQUIRED

ELEV 606	TDZE 588 36L
	TDZE 581 36R



CATEGORY	A	B	C	D
S-ILS 36L	788/18 200 (200- $\frac{1}{2}$ )			
S-LOC 36L	1080/24	492 (500- $\frac{1}{2}$ )	1080/50	492 (500-1)
SIDESTEP 36R	1080/50	499 (500-1)	1080-1 $\frac{1}{2}$	499 (500-1 $\frac{1}{2}$ )
CIRIS FIX MINIMUMS (DME required)				
S-LOC 36L	940/24	352 (400- $\frac{1}{2}$ )	940/30	352 (400- $\frac{5}{8}$ )

SC-2, 16 APR 2026 to 14 MAY 2026

SC-2, 16 APR 2026 to 14 MAY 2026