

LOC/DME I-FJN 110.55 Chan 42 (Y)	APP CRS 356°	Rwy Ldg 36R 36L TDZE 581 588 Apt Elev 607 607
---	------------------------	--

ILS or LOC RWY 36R

DALLAS-FORT WORTH INTL (DFW)

Simultaneous approach authorized with Rwy 35L/C/R. Inop table does not apply to Sidestep 36L Cats A and B. DME or RADAR required.



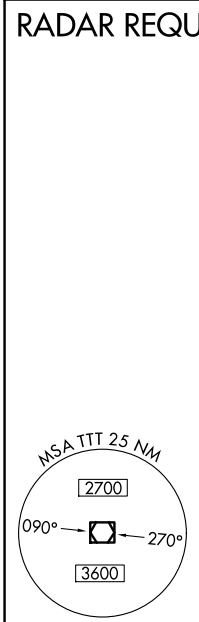
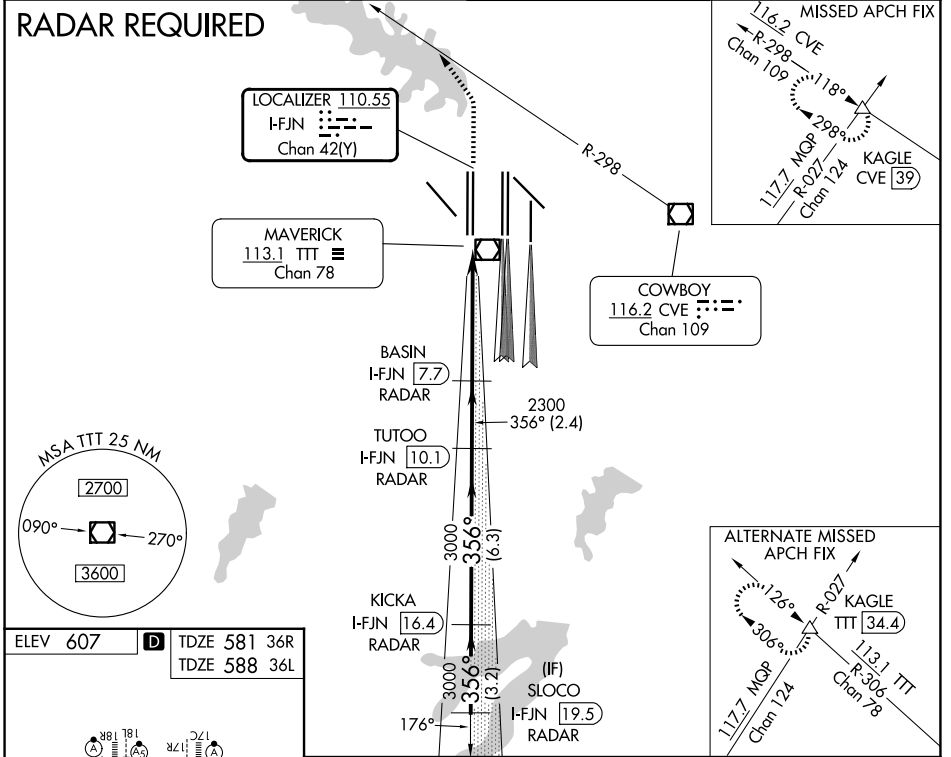
MISSED APPROACH: Climb to 1100, then climbing left turn to 3000 on heading 320° and CVE VOR/DME R-298 to KAGLE INT/CVE 39 DME and hold.

D-ATIS
123.775

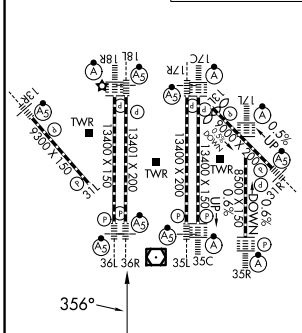
LONE STAR APP CON
118.425

DFW TOWER
126.55 127.5 (E)
124.15 134.9 (W)

GND CON
121.65 121.8 (E)
121.85 (W)

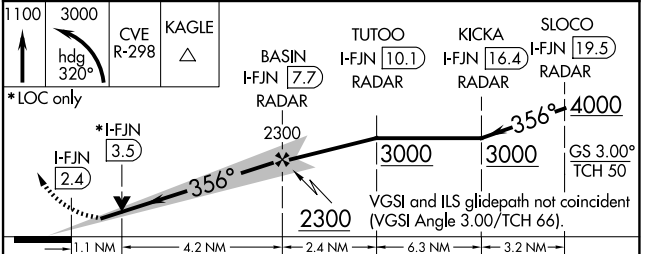


ELEV 607	D	TDZE 581 36R
		TDZE 588 36L



FAF to MAP 5.3 NM

Knots	60	90	120	150	180
Min:Sec	5:18	3:32	2:39	2:07	1:46



CATEGORY	A	B	C	D
S-ILS 36R	781/18 200 (200-½)			
S-LOC 36R	1000/24	419 (400-½)	1000/40	419 (400-¾)
SIDESTEP 36L	1080/50 492 (500-1)			1080-1½ 492 (500-1½)

SC-2, 16 APR 2026 to 14 MAY 2026

SC-2, 16 APR 2026 to 14 MAY 2026