

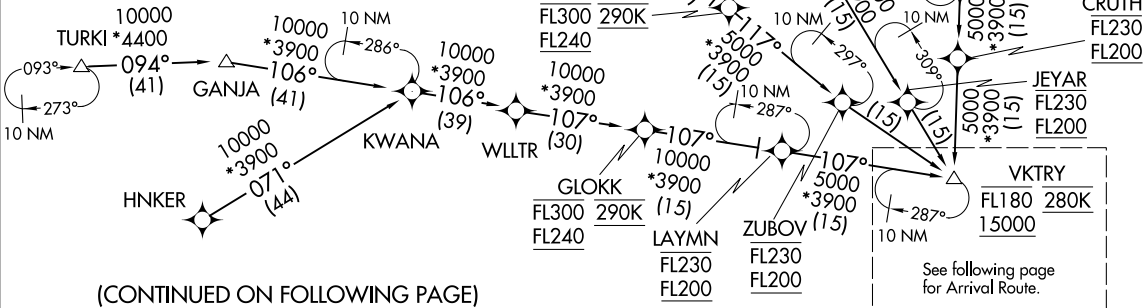
JOVEM SIX ARRIVAL (RNAV) Transition Routes
 (VKTRY.JOVEM6) 11 JUL24 DALLAS-FORT WORTH INTL (DFW)

LONE STAR APP CON
 119.875 284.65
 D-ATIS ARR
 123.775

- BELFR TRANSITION (BELFR.JOVEM6)
- FAWNT TRANSITION (FAWNT.JOVEM6)
- HNKER TRANSITION (HNKER.JOVEM6)
- HOFF TRANSITION (HOFF.JOVEM6)
- IBAKE TRANSITION (IBAKE.JOVEM6)
- KLAWW TRANSITION (KLAWW.JOVEM6)
- MDANO TRANSITION (MDANO.JOVEM6)
- RBUKL TRANSITION (RBUKL.JOVEM6)
- TURKI TRANSITION (TURKI.JOVEM6)
- TYPTN TRANSITION (TYPTN.JOVEM6)
- WLLTR TRANSITION (WLLTR.JOVEM6)

RNAV 1 - DME/DME/IRU or GPS.
 RADAR required.

NOTE: Jet aircraft only.
 NOTE: For use when DFW is operating in a north flow.
 When DFW is operating in a south flow, file and expect the VKTRY (RNAV) STAR.
 NOTE: IBAKE, FAWNT, WLLTR, BELFR, TYPTN, KLAWW Enroute Transitions - Do Not File - to be assigned by ATC.
 NOTE: RBUKL Transition: For OKC terminal area departures only.



(CONTINUED ON FOLLOWING PAGE)

See following page for Arrival Route.

NOTE: Chart not to scale.

JOVEM SIX ARRIVAL (RNAV) Transition Routes
 (VKTRY.JOVEM6) 24305 AL-6039 (FAA)
 DALLAS-FORT WORTH INTL (DFW) DALLAS-FORT WORTH, TEXAS

(VKTRY.JOVEM6) 24305

AL-6039 (FAA)

DALLAS-FORT WORTH INTL (DFW)
DALLAS-FORT WORTH, TEXAS

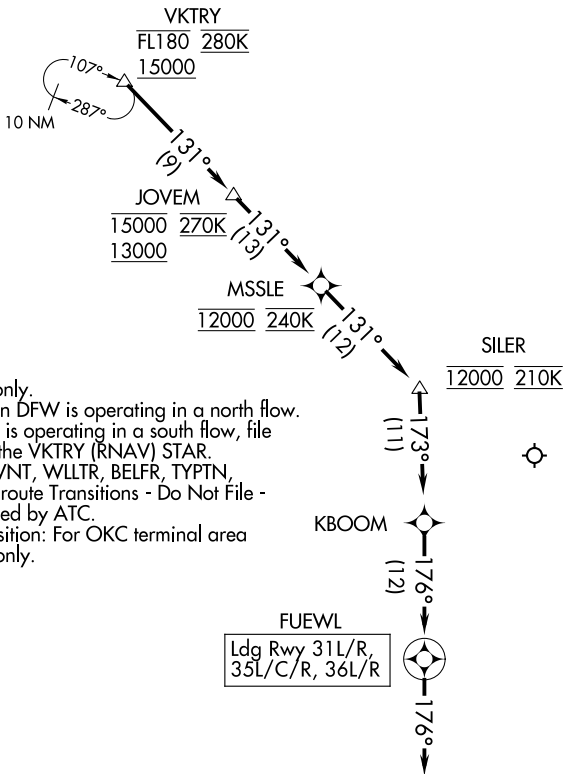
JOVEM SIX ARRIVAL (RNAV)

Arrival Route

LONE STAR APP CON
119.875 284.65
D-ATIS ARR
123.775

RNAV 1 - DME/DME/IRU or GPS.

RADAR required.



- NOTE: Jet aircraft only.
- NOTE: For use when DFW is operating in a north flow. When DFW is operating in a south flow, file and expect the VKTRY (RNAV) STAR.
- NOTE: IBAKE, FAWNT, WILLR, BELFR, TYPTN, KLAWW Enroute Transitions - Do Not File - to be assigned by ATC.
- NOTE: RBUKL Transition: For OKC terminal area departures only.

NOTE: Chart not to scale.

ARRIVAL ROUTE DESCRIPTION

From VKTRY on track 131° to cross JOVEM between 13000 and 15000 and at 270K, then on track 131° to cross MSSLE at 12000 and at 240K, then on track 131° to cross SILER at 12000 and at 210K, then on track 173° to KBOOM, then on track 176° to FUEWL, then on track 176°. Expect RADAR vectors to final approach course.

JOVEM SIX ARRIVAL (RNAV)

Arrival Route

DALLAS-FORT WORTH, TEXAS
DALLAS-FORT WORTH INTL (DFW)

(VKTRY.JOVEM6) 11JUL24

SC-2, 16 APR 2026 to 14 MAY 2026

SC-2, 16 APR 2026 to 14 MAY 2026