

RNAV 1 - DME/DME/IRU or GPS.  
 RADAR required.

**TOP ALTITUDE:  
 2000**

**TAKEOFF MINIMUMS**

Rwys 13L/R, 17L/C/R, 18L/R, 31L/R, 35L/C, 36L/R: Standard.  
 Rwy 35R: Standard with minimum climb of 245' per NM to 1200.

**KUSSO TWO DEPARTURE (RNAV)**  
 (KUSSO2.KUSSO) 22JAN26

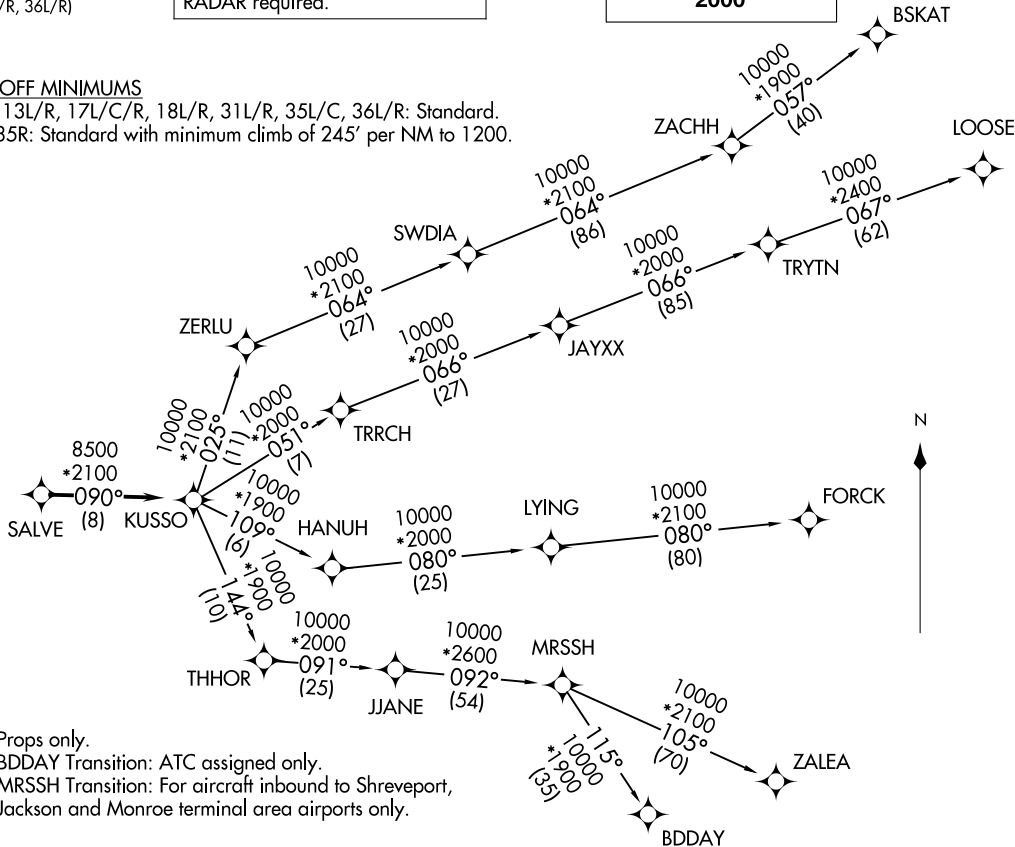
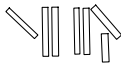
LONE STAR DEP CON  
 125.2 343.65 (Props Only 13L/R, 17L/C/R, 18L/R)  
 124.3 282.275 (Props Only 31L/R, 35L/C/R, 36L/R)  
 D-ATIS DEP  
 135.925  
 CLNC DEL  
 128.25  
 CPDLC  
 GND CON  
 121.65 121.8 (E)  
 121.85 (W)  
 DFW TOWER  
 126.55 127.5 (E)  
 124.15 134.9 (W)

**(KUSSO2.KUSSO) 26022**  
**KUSSO TWO DEPARTURE (RNAV)**

AL-6039 (FAA)

**DALLAS-FORT WORTH INTL (DFW)**  
 DALLAS-FORT WORTH, TEXAS

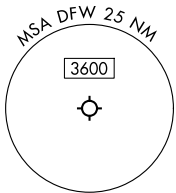
**DALLAS-FORT WORTH, TEXAS**  
 DALLAS-FORT WORTH INTL (DFW)



NOTE: Props only.  
 NOTE: BDDAY Transition: ATC assigned only.  
 NOTE: MRSSH Transition: For aircraft inbound to Shreveport, Jackson and Monroe terminal area airports.

(CONTINUED ON FOLLOWING PAGE)

NOTE: Chart not to scale.



# KUSSO TWO DEPARTURE (RNAV)



## DEPARTURE ROUTE DESCRIPTION

TAKEOFF RUNWAYS 13L/R, 17L/C/R, 18L/R, 31L/R, 35L/C/R, 36L/R: Climb on assigned heading for RADAR vectors to SALVE. Thence. . .

. . .on track 090° to KUSSO, then on (transition). Maintain 2000. Expect filed altitude 10 minutes after departure.

- BDDAY TRANSITION (KUSSO2.BDDAY)
- BSKAT TRANSITION (KUSSO2.BSKAT)
- FORCK TRANSITION (KUSSO2.FORCK)
- LOOSE TRANSITION (KUSSO2.LOOSE)
- MRSSH TRANSITION (KUSSO2.MRSSH)
- ZALEA TRANSITION (KUSSO2.ZALEA)

SC-2, 16 APR 2026 to 14 MAY 2026

SC-2, 16 APR 2026 to 14 MAY 2026