

MRSSH THREE DEPARTURE (RNAV)  
 (MRSSH3.MRSSH) 08SEP22  
 DALLAS-FORT WORTH, TEXAS  
 DALLAS-FORT WORTH INTL (DFW)

LONE STAR DEP CON  
 118.55 290.35  
 D-ATIS DEP  
 135.925  
 CLNC DEL  
 128.25  
 CPDLC  
 GND CON  
 121.65 121.8 (EAST)  
 121.85 (WEST)  
 DFW TOWER  
 126.55 127.5 (EAST)  
 124.15 134.9 (WEST)

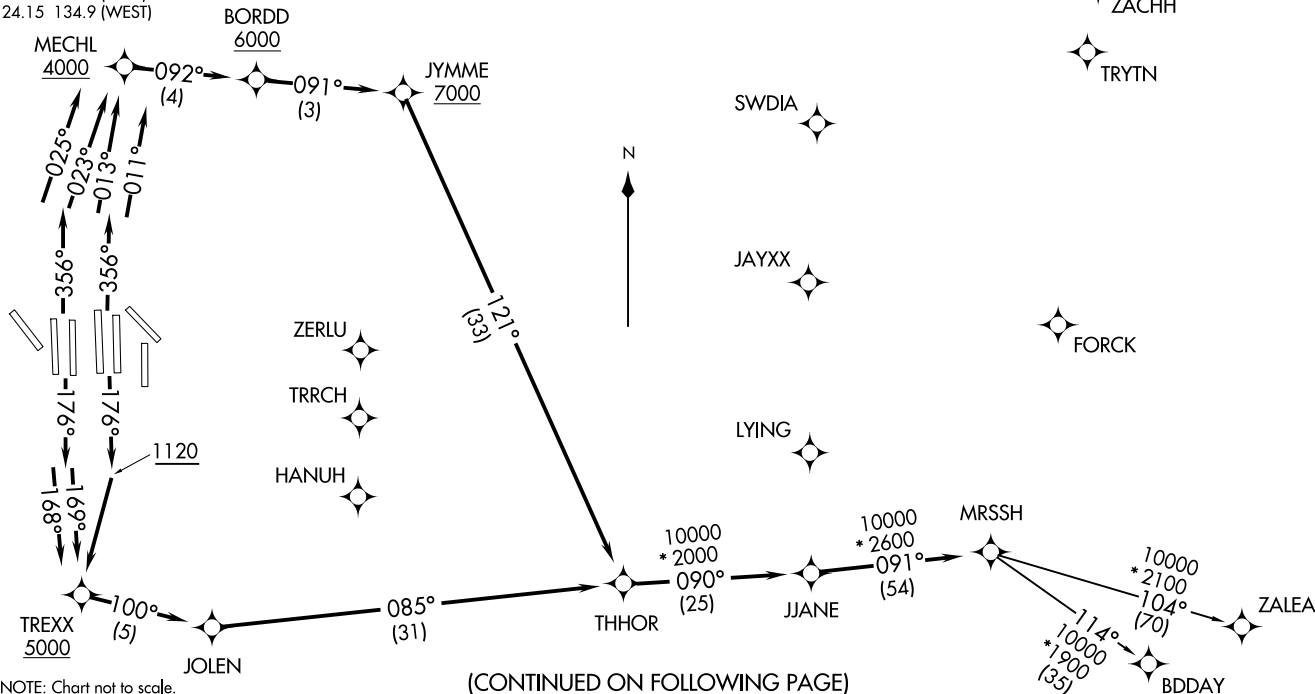
NOTE: BDDAY Transition: ATC assigned only.  
 NOTE: For use by turbojet aircraft only.  
 NOTE: Non-RNAV capable props: file and expect DALLAS or GARLAND DEPARTURE.  
 NOTE: RNAV-capable props: file and expect the KUSSO RNAV DEPARTURE.

RNAV 1 - DME/DME/IRU or GPS.  
 RADAR required.

**TOP ALTITUDE:**  
**RWYS 31L/R: 5000**  
**RWYS 17C/R, 18L/R, 35L/C, 36L/R: 10000**

**TAKEOFF MINIMUMS**

Rwys 31L/R: Standard.  
 Rwys 17C/R, 18L/R, 35L/C, 36L/R: Standard with minimum climb of 500' per NM to 1120.



NOTE: Chart not to scale.

(CONTINUED ON FOLLOWING PAGE)

MRSSH3.MRSSH) 24305  
 MRSSH THREE DEPARTURE (RNAV) AL-6039 (FAA)  
 DALLAS-FORT WORTH INTL (DFW)  
 DALLAS-FORT WORTH, TEXAS



DEPARTURE ROUTE DESCRIPTION

TAKEOFF RUNWAYS 17C/R: Climb on heading 176° to 1120, then direct to cross TREXX at or above 5000, then on track 100° to JOLEN, then on track 085° to THHOR, thence . . . .

TAKEOFF RUNWAY 18L: Climb on heading 176° to intercept course 169° to cross TREXX at or above 5000, then on track 100° to JOLEN, then on track 085° to THHOR, thence . . . .

TAKEOFF RUNWAY 18R: Climb on heading 176° to intercept course 168° to cross TREXX at or above 5000, then on track 100° to JOLEN, then on track 085° to THHOR, thence . . . .

TAKEOFF RUNWAY 35C: Climb on heading 356° to intercept course 011° to cross MECHL at or above 4000, then on track 092° to cross BORDD at or above 6000, then on track 091° to cross JYMME at or above 7000, then on track 121° to THHOR, thence . . . .

TAKEOFF RUNWAY 35L: Climb on heading 356° to intercept course 013° to cross MECHL at or above 4000, then on track 092° to cross BORDD at or above 6000, then on track 091° to cross JYMME at or above 7000, then on track 121° to THHOR, thence . . . .

TAKEOFF RUNWAY 36L: Climb on heading 356° to intercept course 025° to cross MECHL at or above 4000, then on track 092° to cross BORDD at or above 6000, then on track 091° to cross JYMME at or above 7000, then on track 121° to THHOR, thence . . . .

TAKEOFF RUNWAY 36R: Climb on heading 356° to intercept course 023° to cross MECHL at or above 4000, then on track 092° to cross BORDD at or above 6000, then on track 091° to cross JYMME at or above 7000, then on track 121° to THHOR, thence . . . .

. . . . on track 090° to JJANE, then on track 091° to MRSSH, then on (transition).  
Maintain 10000, expect filed altitude 10 minutes after departure.

TAKEOFF RUNWAYS 31L/R: Climb on heading assigned by ATC for RADAR vectors to THHOR, thence . . . .

. . . . on track 090° to JJANE, then on track 091° to MRSSH, then on (transition).  
Maintain 5000, expect filed altitude 10 minutes after departure.

BDDAY TRANSITION (MRSSH3.BDDAY)

ZALEA TRANSITION (MRSSH3.ZALEA)

SC-2, 16 APR 2026 to 14 MAY 2026

SC-2, 16 APR 2026 to 14 MAY 2026