

WAAS CH <b>97324</b> <b>W17D</b>	APP CRS <b>176°</b>	Rwy Ldg <b>13400</b> TDZE <b>562</b> Apt Elev <b>607</b>
--	------------------------	--

# RNAV (GPS) RWY 17C

DALLAS-FORT WORTH INTL (DFW)

**▼** For uncompensated Baro-VNAV systems, LNAV/VNAV NA below -4°C (25°F) or above 54°C (130°F). Simultaneous approach authorized with Rwy 17L and 18L/R. DME/DME RNP-0.3 NA. LNAV procedure NA during simultaneous operations. Use of FD or AP providing RNAV track guidance required during simultaneous operations.

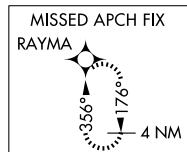
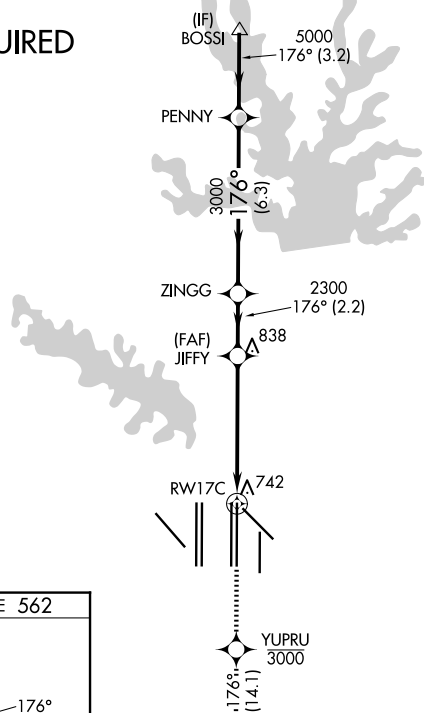
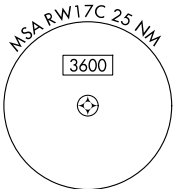
ALSF-2



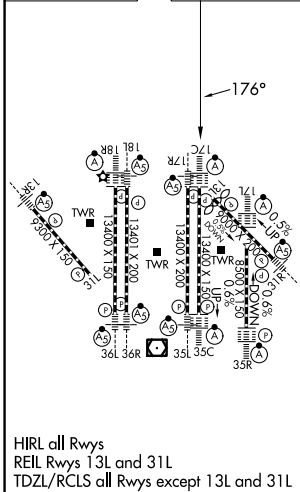
MISSED APPROACH: Climb to at or below 3000 direct YUPRU then climb to 4000 on track 176° to RAYMA and hold.

D-ATIS <b>123.775</b>	LONE STAR APP CON <b>127.075</b>	DFW TOWER <b>126.55 127.5 (E)</b> <b>124.15 134.9 (W)</b>	GND CON <b>121.65 121.8 (E)</b> <b>121.85 (W)</b>
--------------------------	-------------------------------------	---	---

## RADAR REQUIRED



ELEV 607 **D** TDZE 562



3000	YUPRU	4000	RAYMA	VGSi and RNAV glidepath not coincident (VGSi Angle 3.00°/TCH 74).	
↑	✦	↑	✦	PENNY	BOSSI
*LNAV only.		JIFFY	ZINGG	6000	
RWY 17C		*1.1 NM to RWY 17C	2300	5000	GP 3.00° TCH 58
1.1 NM		4.2 NM		6.3 NM	
A		B		C	
LPV DA	762/18		200 (200-½)		
LNAV/VNAV DA	1068/60		506 (500-¼)		
LNAV MDA	1000/24	438 (400-½)		1000/40	438 (400-¾)

SC-2, 16 APR 2026 to 14 MAY 2026

SC-2, 16 APR 2026 to 14 MAY 2026