

WAAS CH <b>4000B</b> <b>W17B</b>	APP CRS <b>176°</b>	Rwy Ldg TDZE Apt Elev	<b>8500</b> <b>545</b> <b>607</b>
--	------------------------	-----------------------------	---

# RNAV (GPS) RWY 17L

DALLAS-FORT WORTH INTL (DFW)

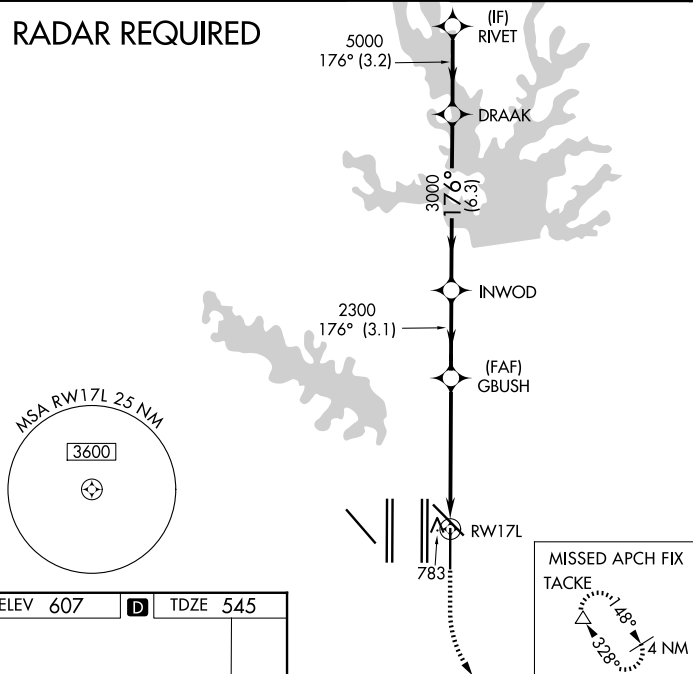
For uncompensated Baro-VNAV systems, LNAV/VNAV NA below -5°C (23°F) or above 54°C (130°F). DME/DME RNP-0.3 NA. Simultaneous approach authorized with Rwy 17C/R and Rwy 18L/R. LNAV procedure NA during simultaneous operations. Use of FD or AP providing RNAV track guidance required during simultaneous operations.



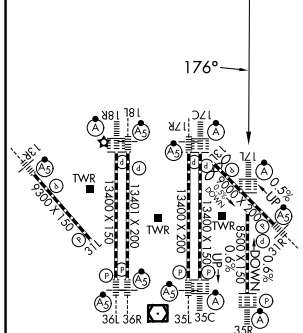
MISSED APPROACH: Climb to 1020 then climbing left turn to 3000 direct TACKE and hold.

D-ATIS <b>123.775</b>	LONE STAR APP CON <b>119.4</b>	DFW TOWER <b>126.55 127.5 (E)</b> <b>124.15 134.9 (W)</b>	GND CON <b>121.65 121.8 (E)</b> <b>121.85 (W)</b>
--------------------------	-----------------------------------	---	---

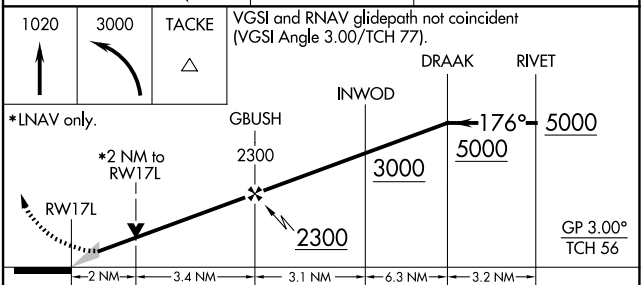
## RADAR REQUIRED



ELEV <b>607</b>	<b>D</b>	TDZE <b>545</b>
-----------------	----------	-----------------



HIRL all Rwys  
REIL Rws 13L and 31L  
TDZL/RCLS all Rws except 13L and 31L



CATEGORY	A	B	C	D
LPV DA		745/18	200 (200-½)	
LNAV/VNAV DA		1063/60	518 (500-1¼)	
LNAV MDA	1240/24	695 (700-½)	1240-1½	695 (700-1½)

SC-2, 16 APR 2026 to 14 MAY 2026

SC-2, 16 APR 2026 to 14 MAY 2026