

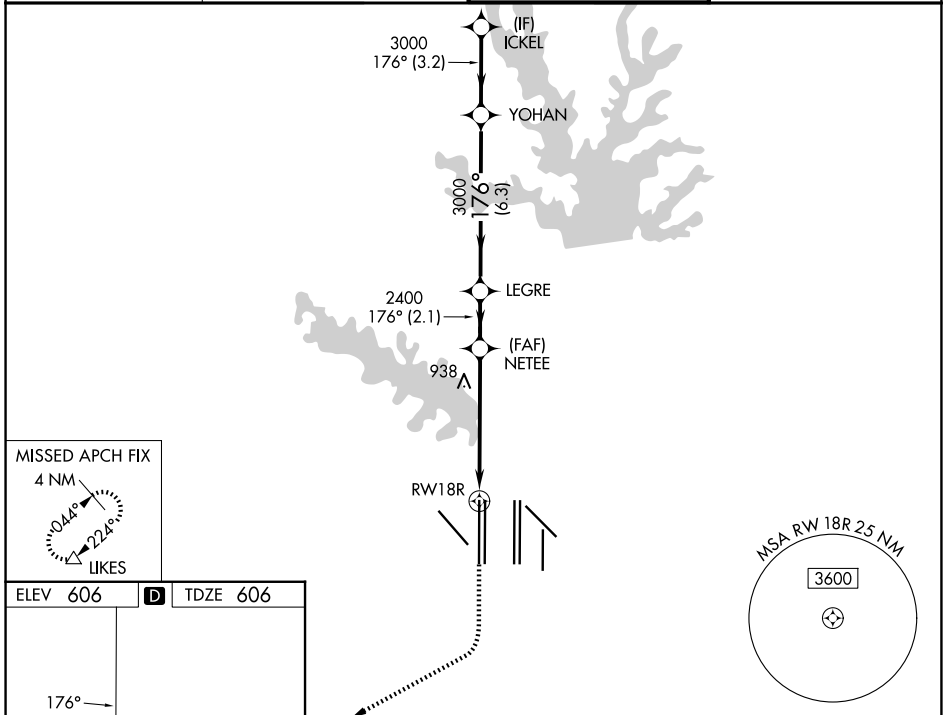
WAAS CH 99407 W18B	APP CRS 176°	Rwy Ldg 13400 TDZE 606 Apt Elev 606
--	------------------------	--

RNAV (GPS) RWY 18R

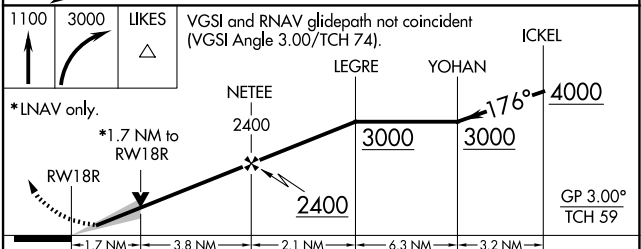
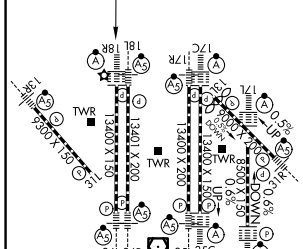
DALLAS-FORT WORTH INTL (DFW)

RADAR required for procedure entry. RNP APCH.		ALSIF-2 	MISSED APPROACH: Climb to 1100 then climbing right turn to 3000 direct LIKES and hold.
<p>▼ Simultaneous approach authorized with Rwy 17L/C/R. For uncompensated Baro-VNAV systems, LNAV/VNAV NA below -4°C or above 54°C. LNAV procedure NA during simultaneous operations. Use of FD or AP providing RNAV track guidance required during simultaneous operations. For inop ALS, increase LNAV/VNAV all Cats visibility to RVR 6000 and LNAV Cats C and D visibility to 1 3/4 SM.</p>			

D-ATIS 123.775	LONE STAR APP CON 118.425	DFW TOWER 126.55 127.5 (E) 124.15 134.9 (W)	GND CON 121.65 121.8 (E) 121.85 (W)
--------------------------	-------------------------------------	---	---



ELEV 606	D	TDZE 606
----------	----------	----------



CATEGORY	A	B	C	D
LPV DA		806/18	200 (200-1/2)	
LNAV/VNAV DA		1012/40	406 (500-3/4)	
LNAV MDA	1220/24	614 (700-1/2)	1220-1 3/8	614 (700-1 3/8)

HIRL all Rwws
REIL Rwws 13L and 31L
TDZL/RCLS all Rwws except 13L and 31L

SC-2, 16 APR 2026 to 14 MAY 2026

SC-2, 16 APR 2026 to 14 MAY 2026