

WAAS CH 40025 W35D	APP CRS 356°	Rwy Ldg 13400 TDZE 563 Apt Elev 607
---------------------------------	------------------------	--

RNAV (GPS) RWY 35C

DALLAS-FORT WORTH INTL (DFW)

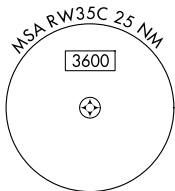
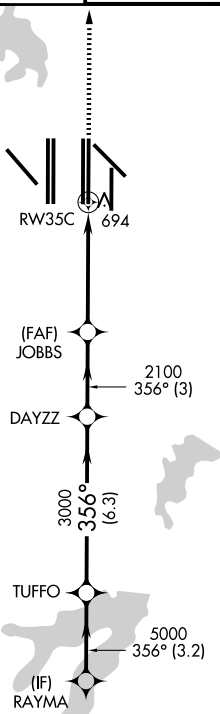
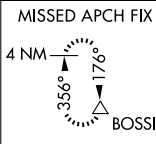
For uncompensated Baro-VNAV systems, LNAV/VNAV NA below -4°C (25°F) or above 54°C (130°F). For inop ALSF, increase LNAV/VNAV all Cats visibility to RVR 6000. Simultaneous approach authorized with Rwy 36 L/R and Rwy 35R. DME/DME RNP-0.3 NA. LNAV procedure NA during simultaneous operations. Use of FD or AP providing RNAV track guidance required during simultaneous operations.

ALSF-2

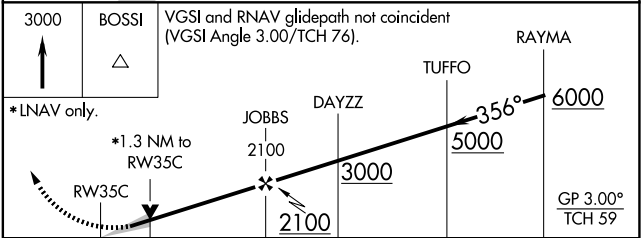
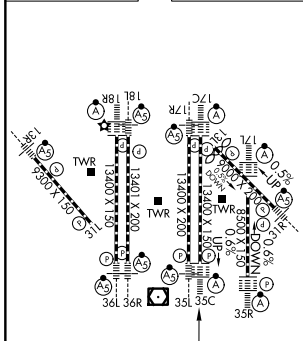
MISSED APPROACH: Climb to 3000 direct BOSSI and hold.

D-ATIS 123.775	LONE STAR APP CON 127.075	DFW TOWER 126.55 127.5 (E) 124.15 134.9 (W)	GND CON 121.65 121.8 (E) 121.85 (W)
--------------------------	-------------------------------------	---	---

RADAR REQUIRED



ELEV 607	D	TDZE 563
----------	----------	----------



CATEGORY	A	B	C	D
LPV DA		763/18	200 (200-½)	
LNAV/VNAV DA		932/40	369 (400-¾)	
LNAV MDA	1040/24	477 (500-½)	1040/50	477 (500-1)

HIRL all Rwys
REIL Rwys 13L and 31L
TDZL/RCLS all Rwys except 13L and 31L