

WAAS CH <b>45805</b> <b>W35B</b>	APP CRS <b>356°</b>	Rwy Ldg <b>13400</b> TDZE <b>564</b> Apt Elev <b>607</b>
--	------------------------	--

# RNAV (GPS) RWY 35L

DALLAS-FORT WORTH INTL (DFW)

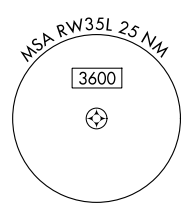
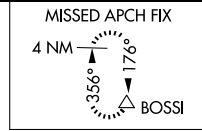
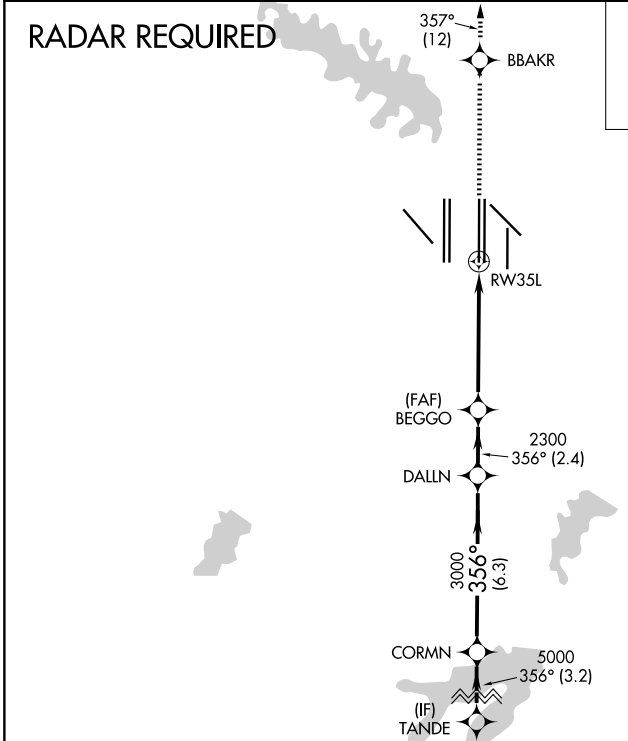
▼ For uncompensated Baro-VNAV systems, LNAV/VNAV NA below -4°C (25°F) or above 54°C (130°F). Simultaneous approach authorized with Rwy 36L/R and Rwy 35R. DME/DME RNP-0.3 NA. LNAV procedure NA during simultaneous operations. Use of FD or AP providing RNAV track guidance required during simultaneous operations.



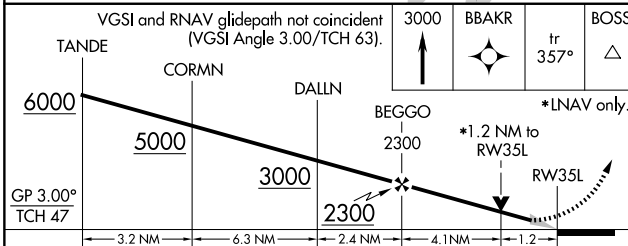
**MISSED APPROACH:**  
Climb to 3000 direct BBAKR and on track 357° to BOSSI and hold.

D-ATIS <b>123.775</b>	LONE STAR APP CON <b>127.075</b>	DFW TOWER <b>126.55 127.5 (E)</b> <b>124.15 134.9 (W)</b>	GND CON <b>121.65 121.8 (E)</b> <b>121.85 (W)</b>
--------------------------	-------------------------------------	---	---

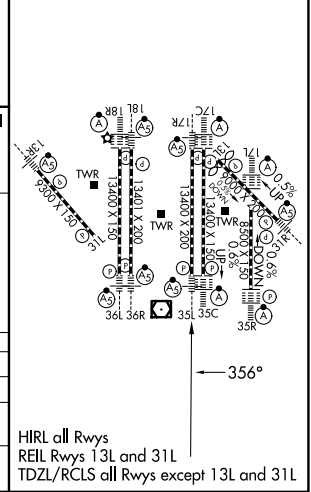
## RADAR REQUIRED



ELEV 607	<b>D</b> TDZE 564
----------	-------------------



CATEGORY	A	B	C	D
LPV DA		764/18	200 (200-½)	
LNAV/VNAV DA		928/40	364 (400-¾)	
LNAV MDA	1020/24	456 (500-½)	1020/45	456 (500-¾)



SC-2, 16 APR 2026 to 14 MAY 2026

SC-2, 16 APR 2026 to 14 MAY 2026